



A Wonderfully Presented Apartment

YORK STREET

MARYLEBONE, W1H

Asking Price
£1,295,000

**BERKSHIRE
HATHAWAY**
HOMESERVICES

LONDON

PROPERTY DETAILS

Guide Price £1,295,000	Square Footage 932
Council Tax Band D	EPC C
Tenure Share of Freehold	

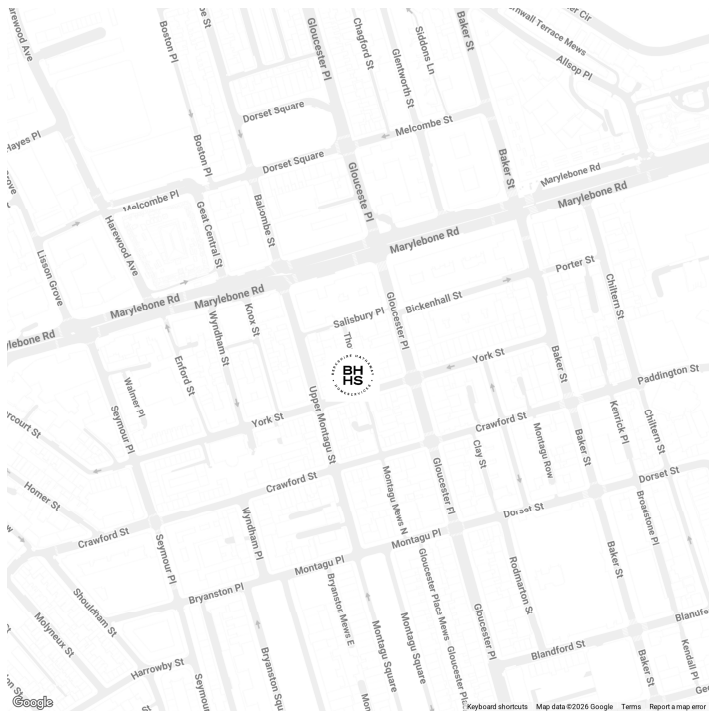
This immaculate flat is in excellent condition throughout and has been lovingly maintained by the current owners. Entering through your own front door, the spacious hallway leads through to the open plan kitchen and living room and guest bathroom. At the front of the property is the principal bedroom with plenty of storage space on offer. Walking through to the rear of the property is a secondary living space, with a plethora of light coming from the skyline panel that electrically opens. This leads through to a study/living space that the owners also use as a guest bedroom, with en-suite shower room.

Located on York Street, in the heart of Marylebone, you have a plethora of boutique shops, restaurants and bars on your doorstep. Transport links are excellent with Baker Street Underground Station (Metropolitan, Bakerloo, Jubilee, Circle and Hammersmith & City Lines) approximately a 5 minute walk from the property.

FEATURES

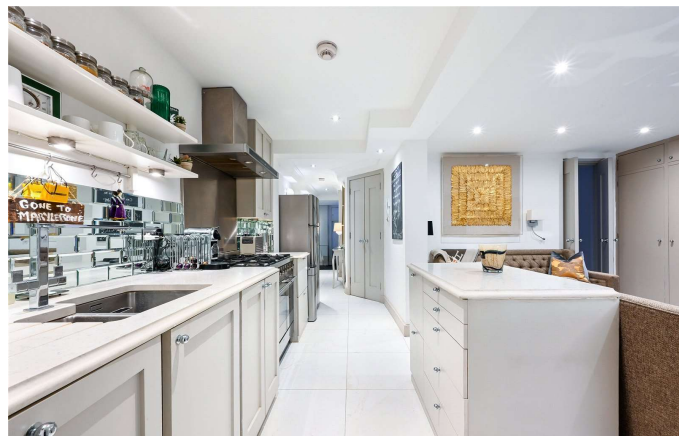
Two Bedrooms
One Reception Room
Two Bathrooms
Period

LOCATION



MARYLEBONE SALES
24-25 Albion St, Hyde Park Estate, London,
W2 2AX

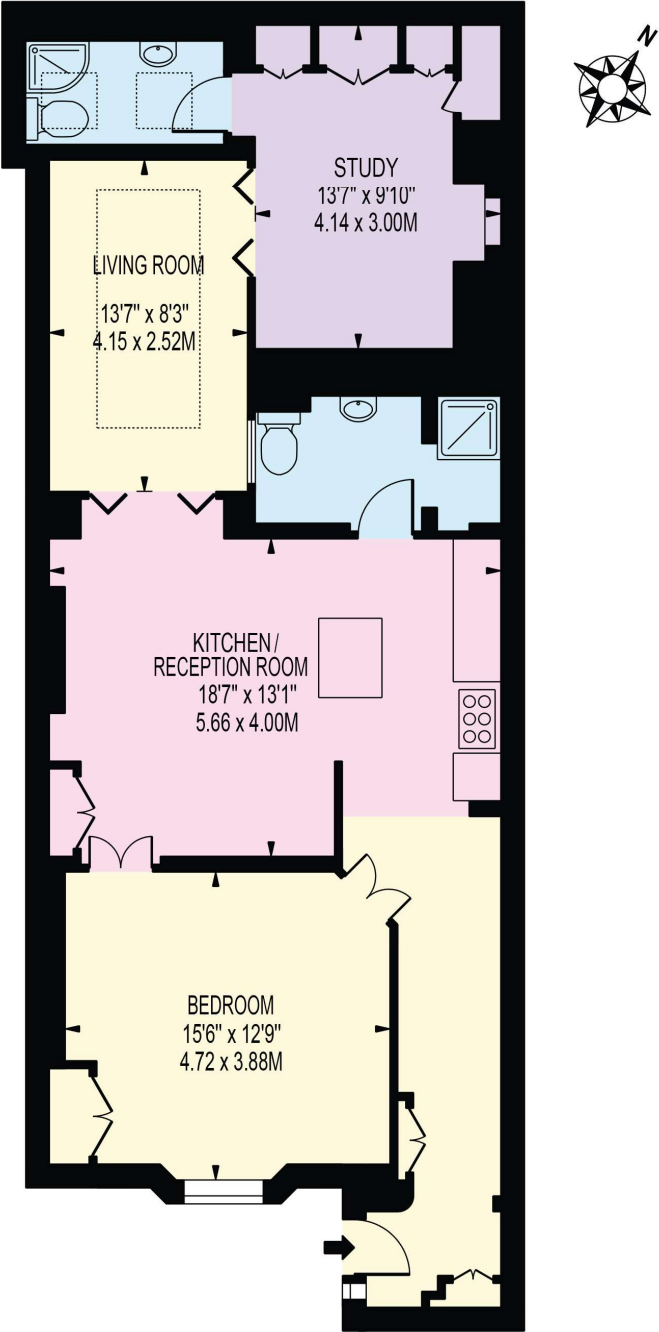
020 7262 2030
sales.marylebone@bhhs-london.com



FLOORPLAN

YORK STREET

APPROXIMATE GROSS INTERNAL FLOOR AREA: 880 SQ FT - 81.75 SQ M



LOWER GROUND FLOOR

FOR ILLUSTRATION PURPOSES ONLY

THIS FLOOR PLAN SHOULD BE USED AS A GENERAL OUTLINE FOR GUIDANCE ONLY AND DOES NOT CONSTITUTE IN WHOLE OR IN PART AN OFFER OR CONTRACT. ANY INTENDING PURCHASER OR LESSEE SHOULD SATISFY THEMSELVES BY INSPECTION, SEARCHES, ENQUIRIES AND FULL SURVEY AS TO THE CORRECTNESS OF EACH STATEMENT. ANY AREAS, MEASUREMENTS OR DISTANCES QUOTED ARE APPROXIMATE AND SHOULD NOT BE USED TO VALUE A PROPERTY OR BE THE BASIS OF ANY SALE OR LET.