



Stylish Two-Bedroom Apartment Opposite Battersea Park

PARKGATE ROAD

BATTERSEA, SW11

£646.15 per week

**BERKSHIRE
HATHAWAY**
HOMESERVICES

LONDON

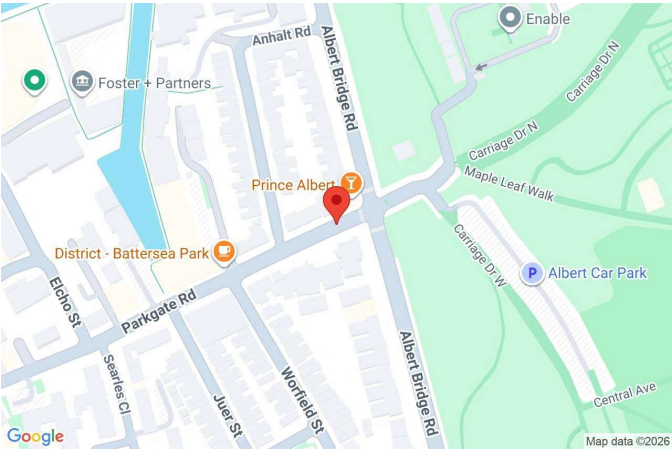
PROPERTY DETAILS

Guide Price £646.15 per week	Square Footage 0	<p>Set on one of Battersea's most sought-after streets, this well-presented two-bedroom apartment enjoys open views and immediate access to Battersea Park, located directly across the road.</p> <p>The property features two generous double bedrooms and a bright reception room, which opens onto a private terrace — an ideal spot for relaxing or entertaining.</p> <p>Excellent natural light flows throughout the apartment, enhanced by wood flooring and a contemporary, neutral finish.</p> <p>The modern, fully fitted kitchen includes integrated appliances, while the smart three-piece bathroom is finished with sleek tiling.</p>
Council Tax Band E	EPC Rating D	

FEATURES

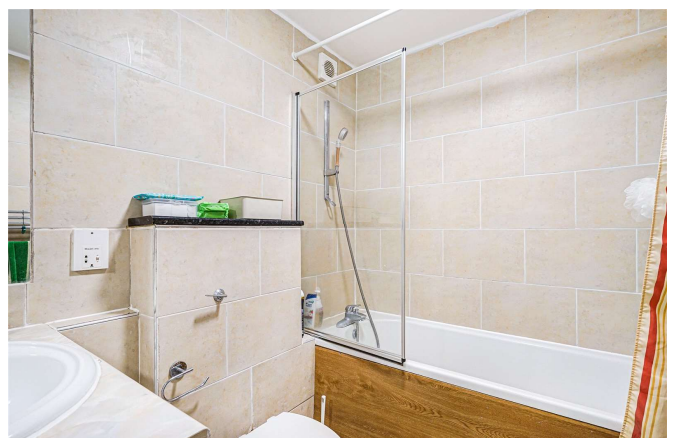
- Two Bedrooms
- One Reception Room
- One Bathroom
- Private Terrace
- Wood Flooring
- Fitted Kitchen
- Secure Entry
- Well-Kept Communal Areas

LOCATION



HYDE PARK LETTINGS
24-25 Albion Street, W2 2AX

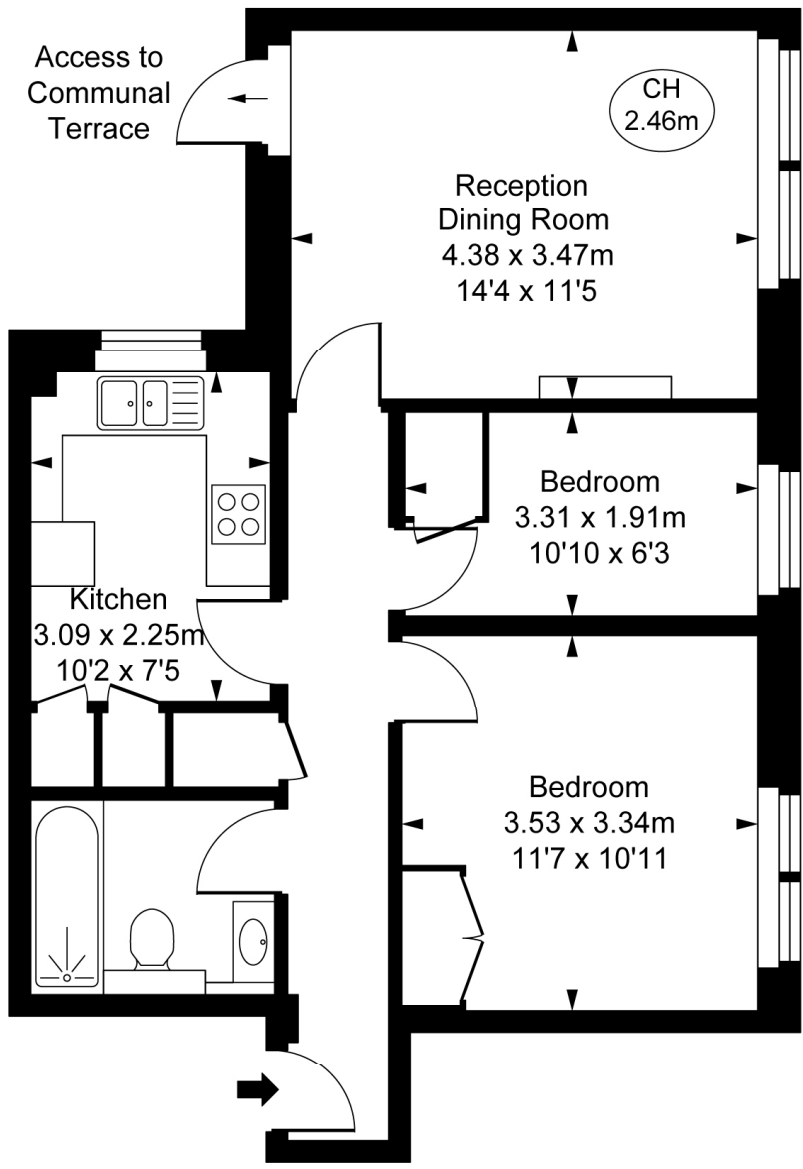
020 7262 2030
lettings.hydepark@bhhs-london.com



FLOORPLAN



St Mary Le Park Court,
Parkgate Road, SW11
Approximate Gross Internal Area
56.02 sq m / 603 sq ft
(CH = Ceiling Heights)



First Floor

This plan is not to scale. It is for guidance and not for valuation purposes.
All measurements and areas are approximate only, and have been prepared in accordance with the current edition of the RICS Code of Measuring Practice.
© Fulham Performance