



ENNISMORE GARDENS

LONDON, SW7

**BERKSHIRE
HATHAWAY** | LONDON
HOMESERVICES



Lateral Knightsbridge apartment blending refined elegance with terrace living on a grand scale

KNIGHTSBRIDGE SALES
55-57 SLOANE AVENUE, SW3 3DH
020 7235 9641
sales.knightsbridge@bhhs-london.com

PROPERTY DETAILS

This lateral fourth-floor flat, set within a stunning Portland stone building with lift and resident porter in the heart of Knightsbridge has been impeccably refurbished to the highest standards, showcasing the finest luxury materials and Poliform woodworks throughout.

It features BOFFI kitchen with Miele appliances, bespoke large-format Italian stonework, and state-of-the-art home automation the air-conditioning, heating, LUTRON lighting, and multi-zone speaker system are seamlessly integrated and can be controlled via home tablets & phone.

The property offers two bedrooms, two bathrooms, a very spacious reception and dining area with a semi-open plan kitchen, and a guest W.C.

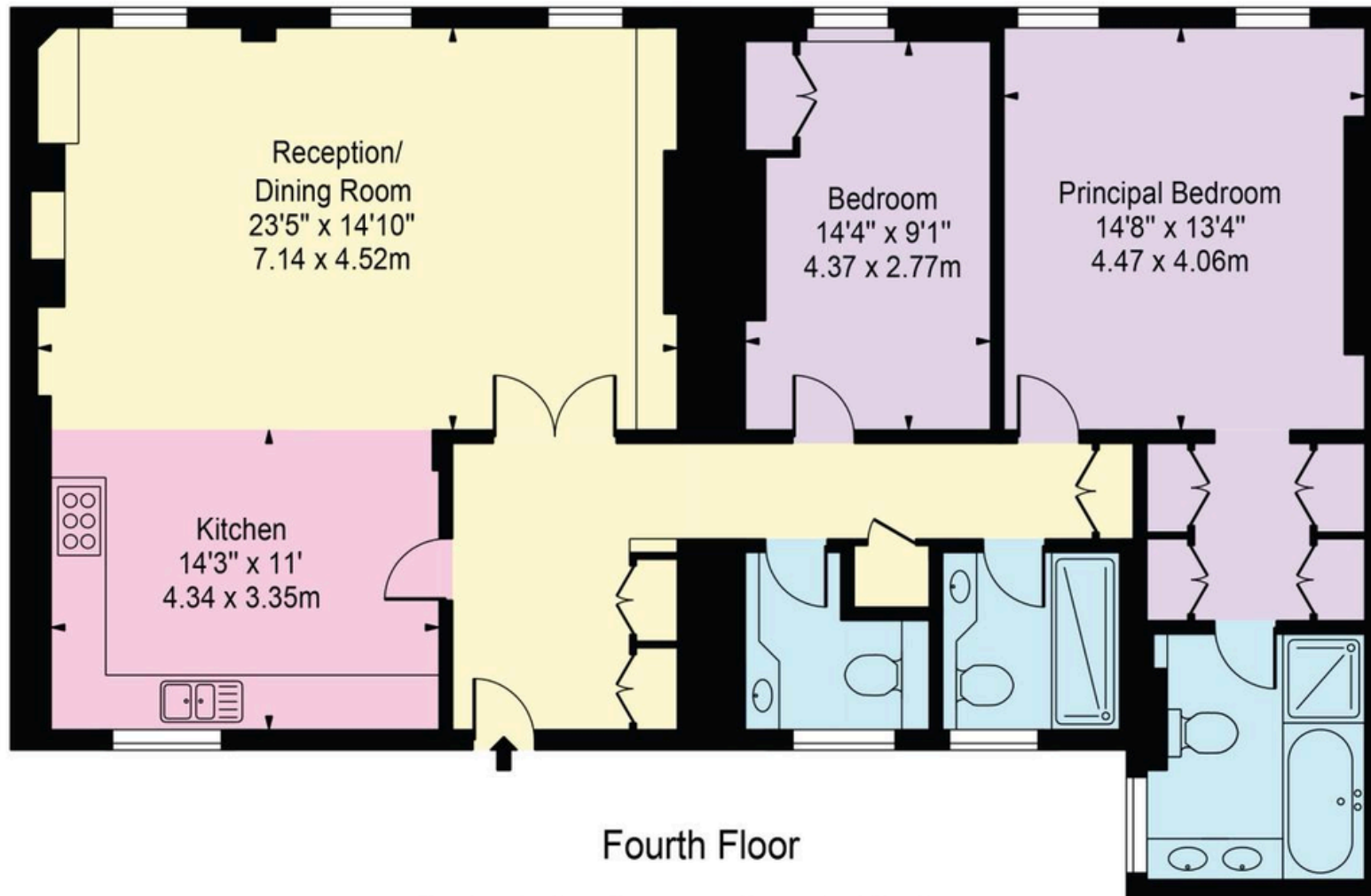
Ennismore Gardens is widely regarded as one of Knightsbridge's finest addresses, ideally positioned just moments from the open green spaces of Hyde Park.





Ennismore Gardens

Approx. Gross Internal Area 1279 Sq Ft - 118.82 Sq M



Fourth Floor

For Illustration Purposes Only - Not To Scale

This floor plan should be used as a general outline for guidance only and does not constitute in whole or in part an offer or contract. Any intending purchaser or lessee should satisfy themselves by inspection, searches, enquiries and full survey as to the correctness of each statement. Any areas, measurements or distances quoted are approximate and should not be used to value a property or be the basis of any sale or let.

Copyright Morriarti Photography & Design LTD

PROPERTY DETAILS

Guide Price

£2,850,000

Square Footage

1279 sqft

Council Tax Band

G

EPC Rating

C

Ground Rent

£ peppercorn

Service Charge

£12,000 per anum

Leasehold

91 years remaining

FEATURES

- 2 bedrooms
- 1 Reception
- 2 Bathrooms
- Guest WC
- Upper Floor
- Lift
- Resident Porter
- Air conditioning
- Access to communal gardens

LOCATION

