



Modern Mews Home with Parking in Prime
Connaught Village

SOUTHWICK YARD

HYDE PARK ESTATE, W2

£2,250 per week

**BERKSHIRE
HATHAWAY**
HOMESERVICES

LONDON

PROPERTY DETAILS

Guide Price £2,250 per week	Square Footage 1520
Council Tax Band H	EPC Rating D

Nestled within a quiet gated mews, this contemporary three-bedroom home—complete with a separate study, three bathrooms and a guest WC—offers a calm retreat in the heart of Connaught Village. The property also benefits from its own private parking space.

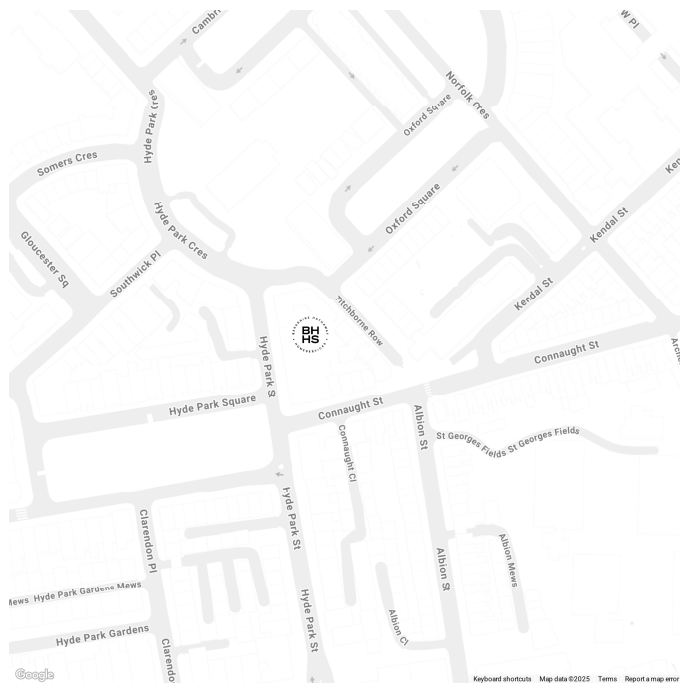
Presented in excellent condition, the house features modern finishes and thoughtfully designed interiors throughout. Its peaceful mews setting provides a sense of privacy while still being moments from the amenities of Connaught Village.

Southwick Yard is ideally placed for excellent transport links, including Lancaster Gate (Central line) and Paddington Station for the Heathrow Express, Elizabeth Line, and multiple Underground connections (District, Circle, Bakerloo and Hammersmith & City lines). Oxford Street and the West End are within easy reach, placing world-class shopping, restaurants and entertainment close by.

FEATURES

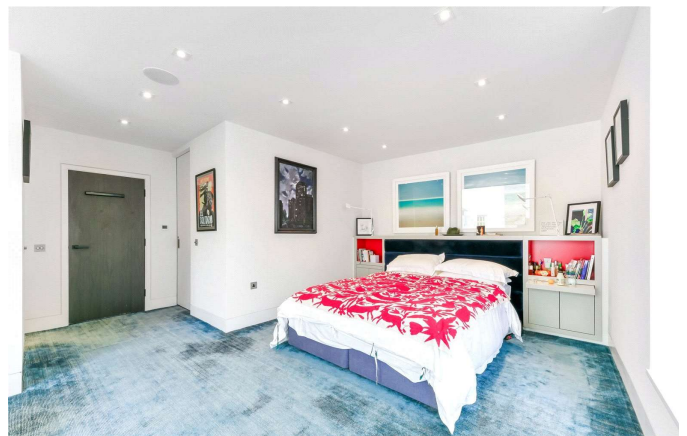
- Three Bedrooms
- One Reception Room
- Four Bathrooms
- Off Street Parking
- Semi Detached
- Furnished
- Short Let
- All Bills Included

LOCATION



HYDE PARK LETTINGS
24-25 Albion Street, W2 2AX

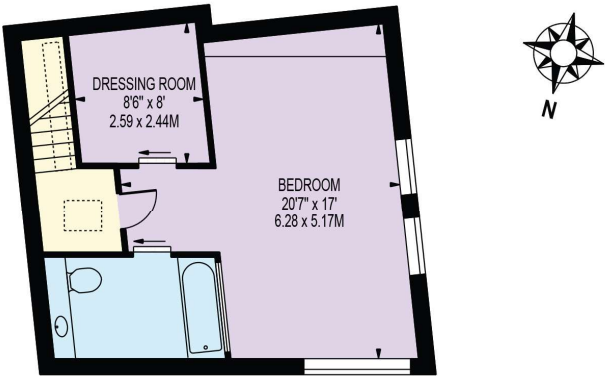
020 7262 2030
lettings.hydepark@bhhs-london.com



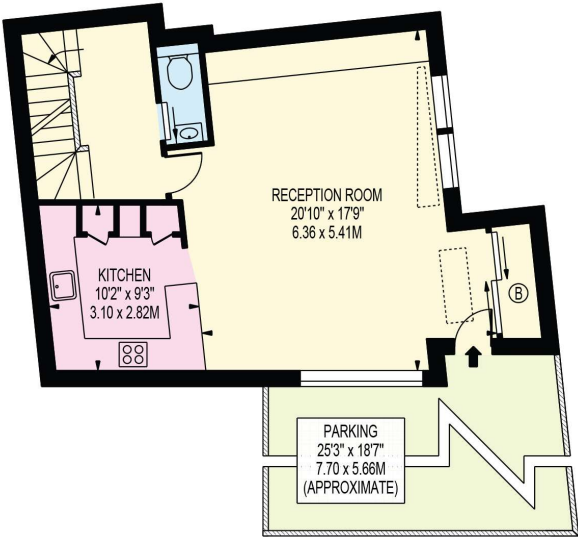
FLOORPLAN

SOUTHWICK YARD

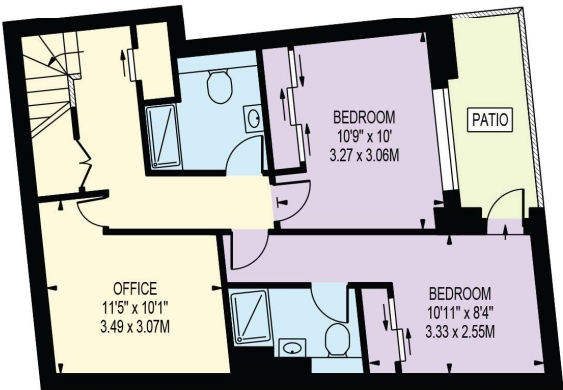
APPROXIMATE GROSS INTERNAL FLOOR AREA: 1553 SQ FT - 144.31 SQ M



FIRST FLOOR



GROUND FLOOR



LOWER GROUND FLOOR

FOR ILLUSTRATION PURPOSES ONLY

THIS FLOOR PLAN SHOULD BE USED AS A GENERAL OUTLINE FOR GUIDANCE ONLY AND DOES NOT CONSTITUTE IN WHOLE OR IN PART AN OFFER OR CONTRACT. ANY INTENDING PURCHASER OR LESSEE SHOULD SATISFY THEMSELVES BY INSPECTION, SEARCHES, ENQUIRIES AND FULL SURVEY AS TO THE CORRECTNESS OF EACH STATEMENT. ANY AREAS, MEASUREMENTS OR DISTANCES QUOTED ARE APPROXIMATE AND SHOULD NOT BE USED TO VALUE A PROPERTY OR BE THE BASIS OF ANY SALE OR LET.