



Two Bedroom with Views and Parking at One Tower Bridge

DUCHESS WALK

TOWER BRIDGE, SE1

Asking Price
£1,900,000

**BERKSHIRE
HATHAWAY**
HOMESERVICES

LONDON

PROPERTY DETAILS

Guide Price £1,900,000	Square Footage 1053
Council Tax Band G	EPC C
Ground Rent £1,318 pa	Service Charge £15,993 pa
Tenure Leasehold	

A spacious and high specification two bedroom apartment with wrap-around balcony set on the ninth floor of Tudor House, part of the exclusive One Tower Bridge development.

Residents also benefit from a 24 hour Concierge as well as facilities including a gym, business lounge, virtual golf room, spa and swimming pool.

Private parking is also included in the sale.

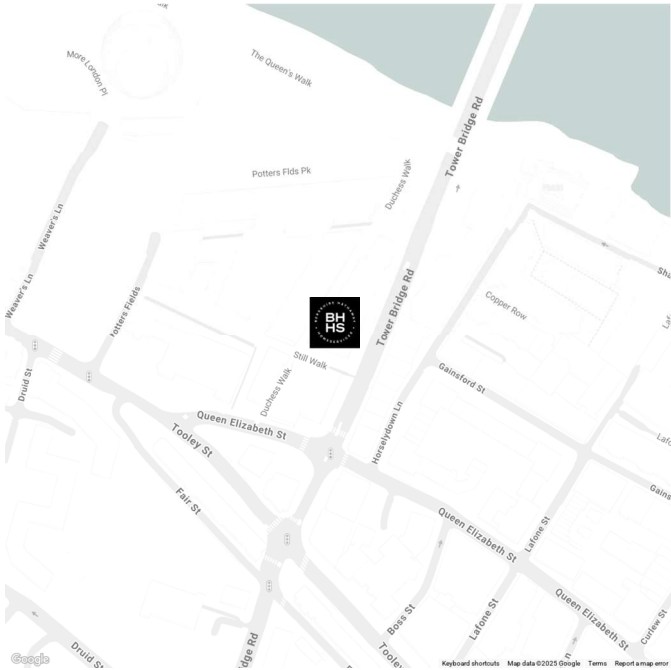
One Tower Bridge is located on the banks of the River Thames overlooking Tower Bridge in a vibrant area offering a mix of cultural attractions, office buildings, restaurants, and retail.

London Bridge (Northern & Jubilee lines), Tower Hill (District & Circle lines), and Tower Gateway (DLR to Canary Wharf) are also all within walking distance.

FEATURES

- Two Bedrooms
- One Reception Room
- Two Bathrooms
- Balcony
- Communal Gardens
- Swimming Pool
- Communal Gardens
- Lift

LOCATION



KINGS CROSS SALES
Unit 4,6 Pancras Square, N1C 4AG

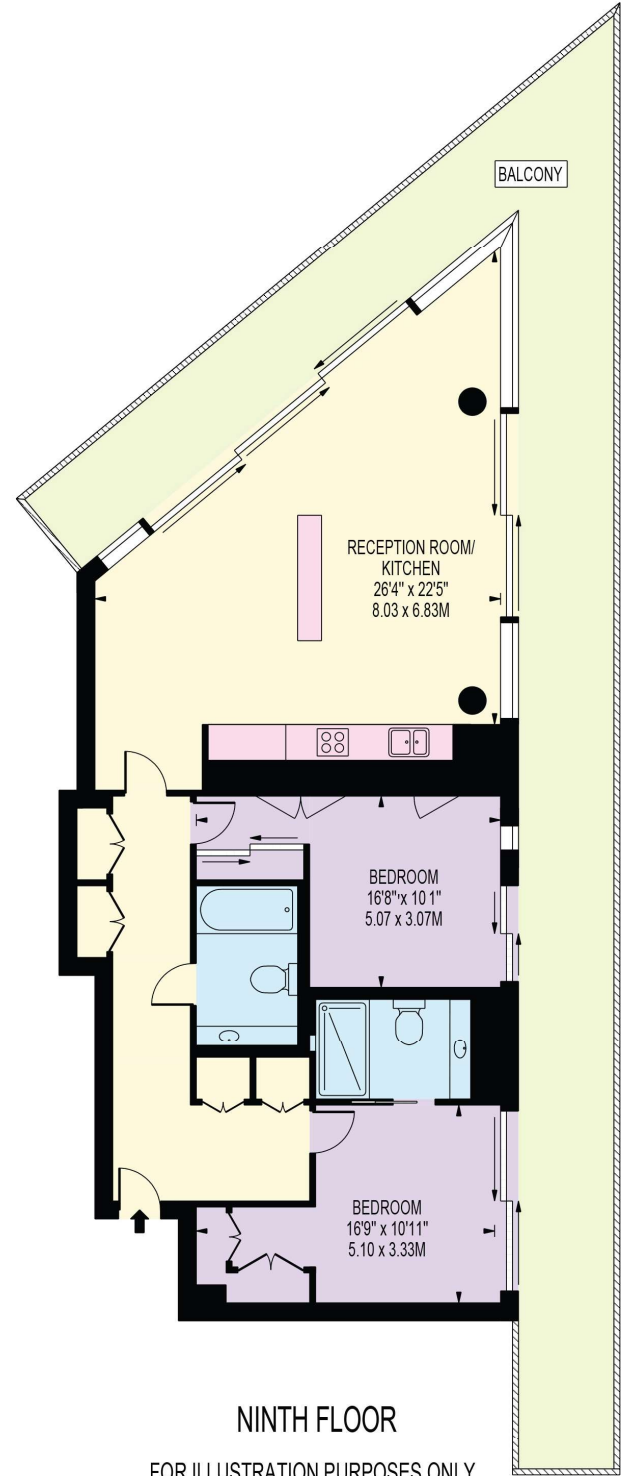
020 7467 2020
sales.kingscross@bhhs-london.com



FLOORPLAN

TUDOR HOUSE

APPROXIMATE GROSS INTERNAL FLOOR AREA: 1053 SQ FT - 97.80 SQ M



THIS FLOOR PLAN SHOULD BE USED AS A GENERAL OUTLINE FOR GUIDANCE ONLY AND DOES NOT CONSTITUTE IN WHOLE OR IN PART AN OFFER OR CONTRACT. ANY INTENDING PURCHASER OR LESSEE SHOULD SATISFY THEMSELVES BY INSPECTION, SEARCHES, ENQUIRIES AND FULL SURVEY AS TO THE CORRECTNESS OF EACH STATEMENT. ANY AREAS, MEASUREMENTS OR DISTANCES QUOTED ARE APPROXIMATE AND SHOULD NOT BE USED TO VALUE A PROPERTY OR BE THE BASIS OF ANY SALE OR LET.