



Stunning Two Bedroom Home

WHEATLEY STREET

MARYLEBONE, W1G

£1,500 per week

**BERKSHIRE
HATHAWAY**
HOMESERVICES

LONDON

PROPERTY DETAILS

Guide Price £1,500 per week	Square Footage 986
Council Tax Band G	EPC Rating D

Nestled in the heart of Marylebone on Wheatley Street, this beautifully presented two-level home offers a rare blend of modern comfort, space, and contemporary style. Recently refurbished to an exceptional standard, the property has been thoughtfully designed to maximise light and flow, with high-quality finishes throughout.

Ideally located, Wheatley Street enjoys all the benefits of central Marylebone living. Baker Street and Marylebone stations are moments away, offering superb transport connections across London, with Bond Street and Regent’s Park stations also within easy reach. Marylebone High Street, known for its boutique shops, vibrant cafés, and restaurants, is just a short walk away, while the green open spaces of Regent’s Park provide a tranquil retreat from city life. This location combines convenience, culture, and charm, making it an exceptional place to call home.

FEATURES

- Two Bedrooms
- One Reception Room
- Two Bathrooms
- Period
- Furnished
- Ground Floor

LOCATION



MARYLEBONE LETTINGS

20A Paddington Street, W1U 5QP

020 7486 6338

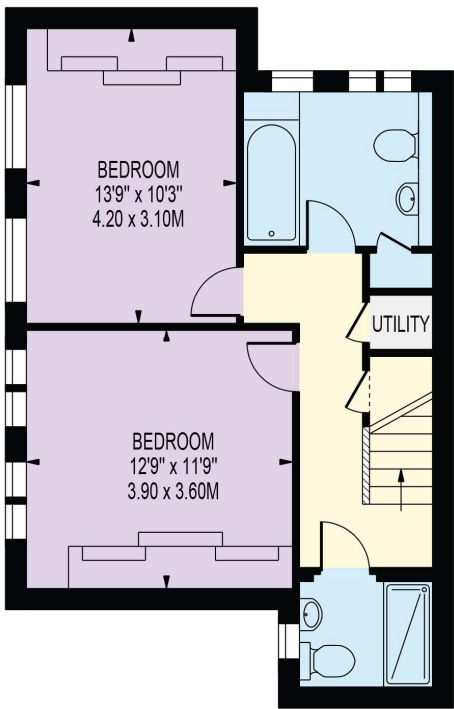
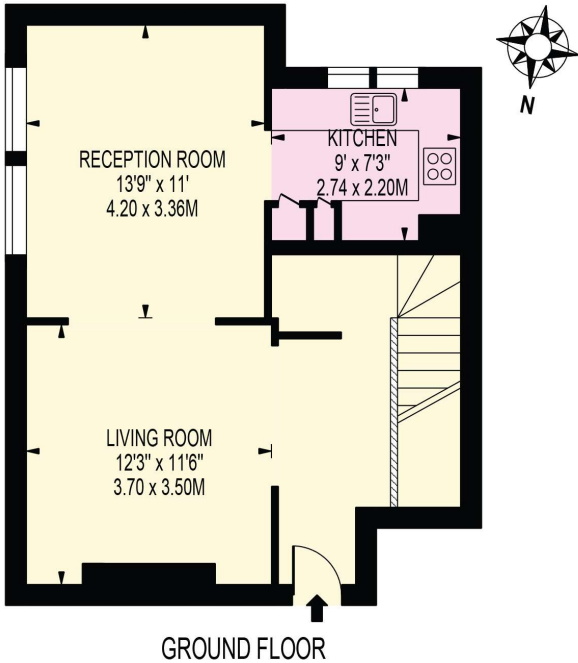
lettings.marylebone@bhhs-london.com



FLOORPLAN

WHEATLEY STREET

APPROXIMATE GROSS INTERNAL FLOOR AREA: 986 SQ FT - 91.61 SQ M



LOWER GROUND FLOOR
FOR ILLUSTRATION PURPOSES ONLY

THIS FLOOR PLAN SHOULD BE USED AS A GENERAL OUTLINE FOR GUIDANCE ONLY AND DOES NOT CONSTITUTE IN WHOLE OR IN PART AN OFFER OR CONTRACT.
ANY INTENDING PURCHASER OR LESSEE SHOULD SATISFY THEMSELVES BY INSPECTION, SEARCHES, ENQUIRIES AND FULL SURVEY AS TO THE CORRECTNESS OF EACH STATEMENT.
ANY AREAS, MEASUREMENTS OR DISTANCES QUOTED ARE APPROXIMATE AND SHOULD NOT BE USED TO VALUE A PROPERTY OR BE THE BASIS OF ANY SALE OR LET.