



An Exceptional Two Bedroom Two Bathroom Penthouse

# FULHAM ROAD

CHELSEA, SW10

£785,00  
per week

**BERKSHIRE  
HATHAWAY**  
HOMESERVICES

LONDON

# PROPERTY DETAILS

|  |                               |
|--|-------------------------------|
| <b>Guide Price</b><br>£785.00 per week | <b>Square Footage</b><br>1023 |
| <b>Council Tax Band</b><br>G           | <b>EPC Rating</b><br>D        |

We are pleased to offer this exceptional and immaculately presented two-bedroom flat, situated on the third floor of Heaton House in Chelsea. A standout feature of the property is the unusually spacious private roof terrace, occupying much of the flat's footprint on the fourth floor.

The property boasts an open-plan design with excellent natural light throughout, a newly fitted kitchen and shower room, and a charming log burner in the reception room—offering both style and warmth.

Enjoy far-reaching views over the gardens of Seymour Walk. Ideally positioned within easy reach of South Kensington, Earl's Court, and Fulham Broadway stations, and just a short stroll from the sought-after shops and eateries of Hollywood Road and the vibrant 'Beach' end of Fulham Road.

## FEATURES

- Two Bedrooms
- One Reception Room
- Two Bathrooms
- 24 Hour Security
- Penthouse
- Third Floor
- Private Roof Terrace
- Open Plan Design

## LOCATION



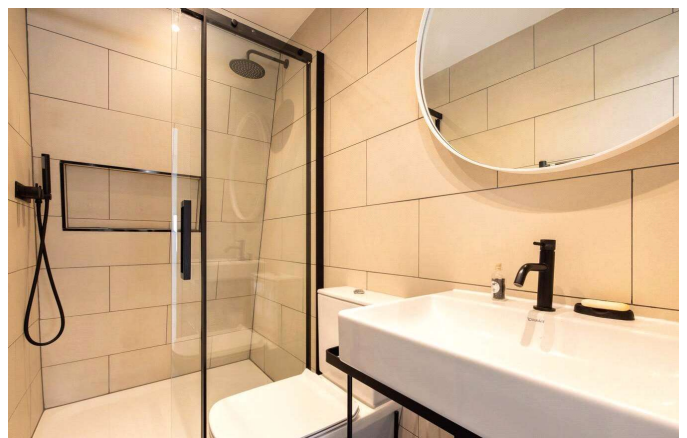
### KNIGHTSBRIDGE LETTINGS

55-57 SLOANE AVENUE, SW3 3DH

020 7235 9641

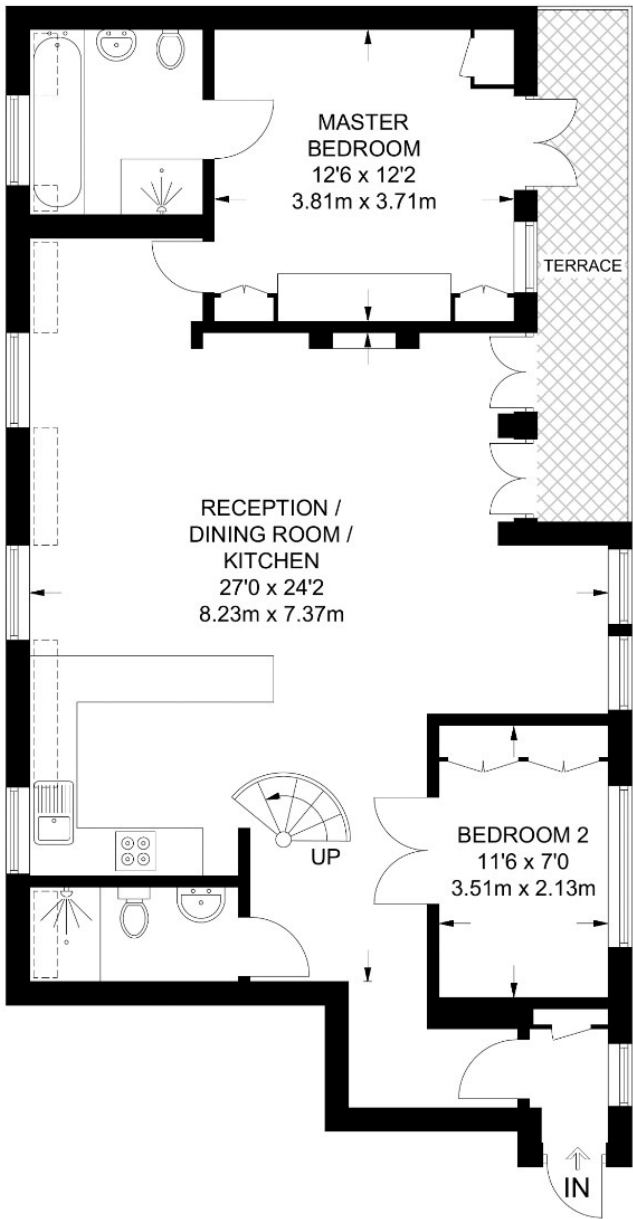
lettings.knightsbridge@bhhs-london.com



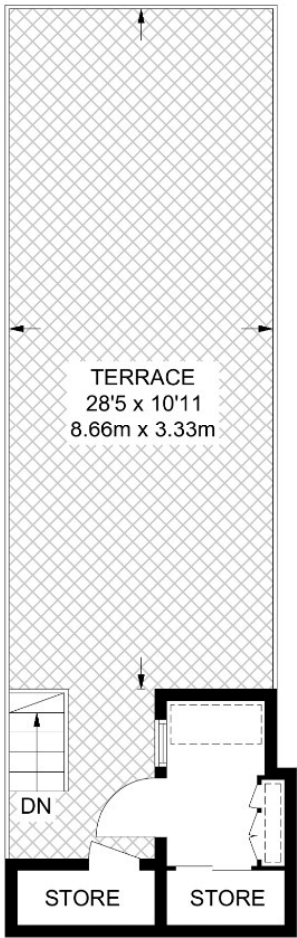


# FLOORPLAN

APPROXIMATE FLOOR AREA = 1023 SQ FT / 95.1 SQ M  
INCLUDING LIMITED USE AREA (49 SQ FT / 4.5 SQ M)



[Hatched area] = REDUCE HEAD HEIGHT BELOW 1.5M



**THIRD FLOOR**  
**966 SQ FT / 89.8 SQ M**  
**INCLUDING LIMITED USE AREA**  
**(38 SQ FT / 3.5 SQ M)**

**FOURTH FLOOR**  
**57 SQ FT / 5.3 SQ M**  
**INCLUDING LIMITED USE AREA**  
**(11 SQ FT / 1 SQ M)**

Surveyed and drawn in accordance with the International Property Measurement Standards (IPMS 2: Residential) [FOXTONS.CO.UK](http://FOXTONS.CO.UK)

