



This Three Bedroom, Three Bathroom Apartment is Located
in a Highly Sought After Portered Mansion Block, Directly
Opposite Hyde Park

ALBION STREET

HYDE PARK, W2

Asking Price
£2,500,000

**BERKSHIRE
HATHAWAY**
HOMESERVICES

LONDON

PROPERTY DETAILS

Guide Price	Square Footage
£2,500,000	1,173

Council Tax Band	EPC
H	To be confirmed

Tenure
Leasehold

This three bedroom, three bath/shower room apartment is located in a highly sought after portered mansion block, directly opposite Hyde Park. The property has been tastefully modernised throughout, benefitting from a spacious reception room, a separate kitchen, three ensuite bedrooms and a guest cloakroom.

Albion Gate is a highly sought after Art Deco style mansion block located directly opposite Hyde Park and benefitting from 24 hour porters and lift. The property is conveniently located within 0.3 and 0.6 miles of Marble Arch and Paddington stations respectively.

FEATURES

Three Bedrooms

One Reception Room

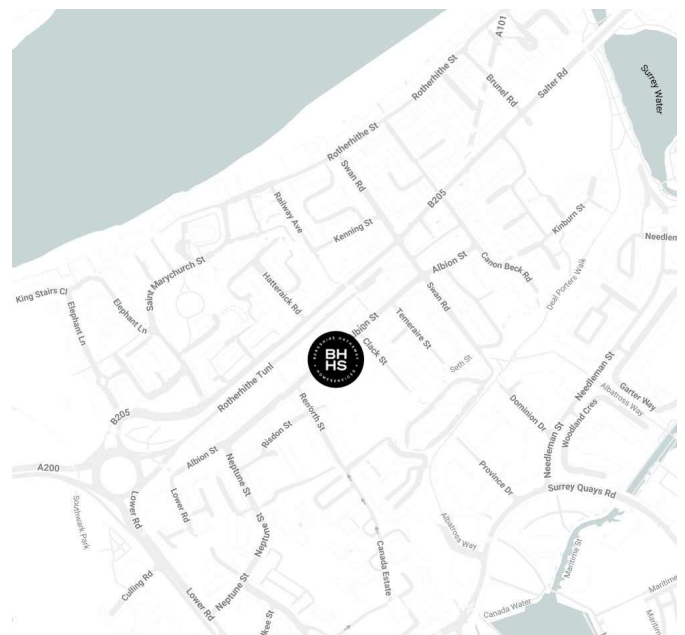
Three Bathrooms

Concierge / Porter

Lift

Period

LOCATION

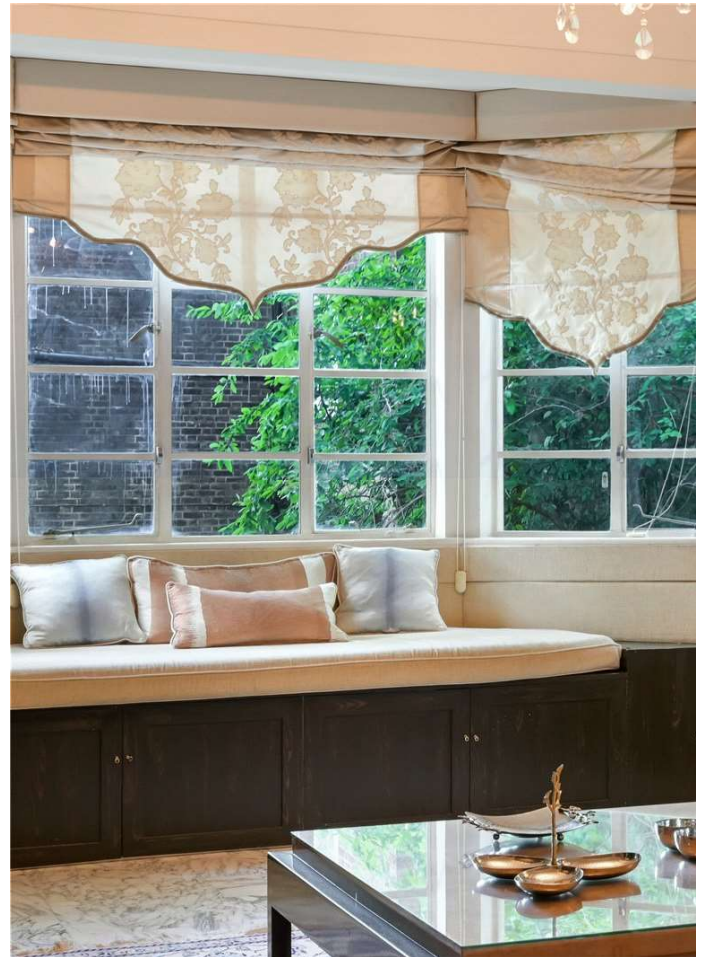


HYDE PARK SALES

24-25 Albion Street, W2 2AX

020 7262 2030

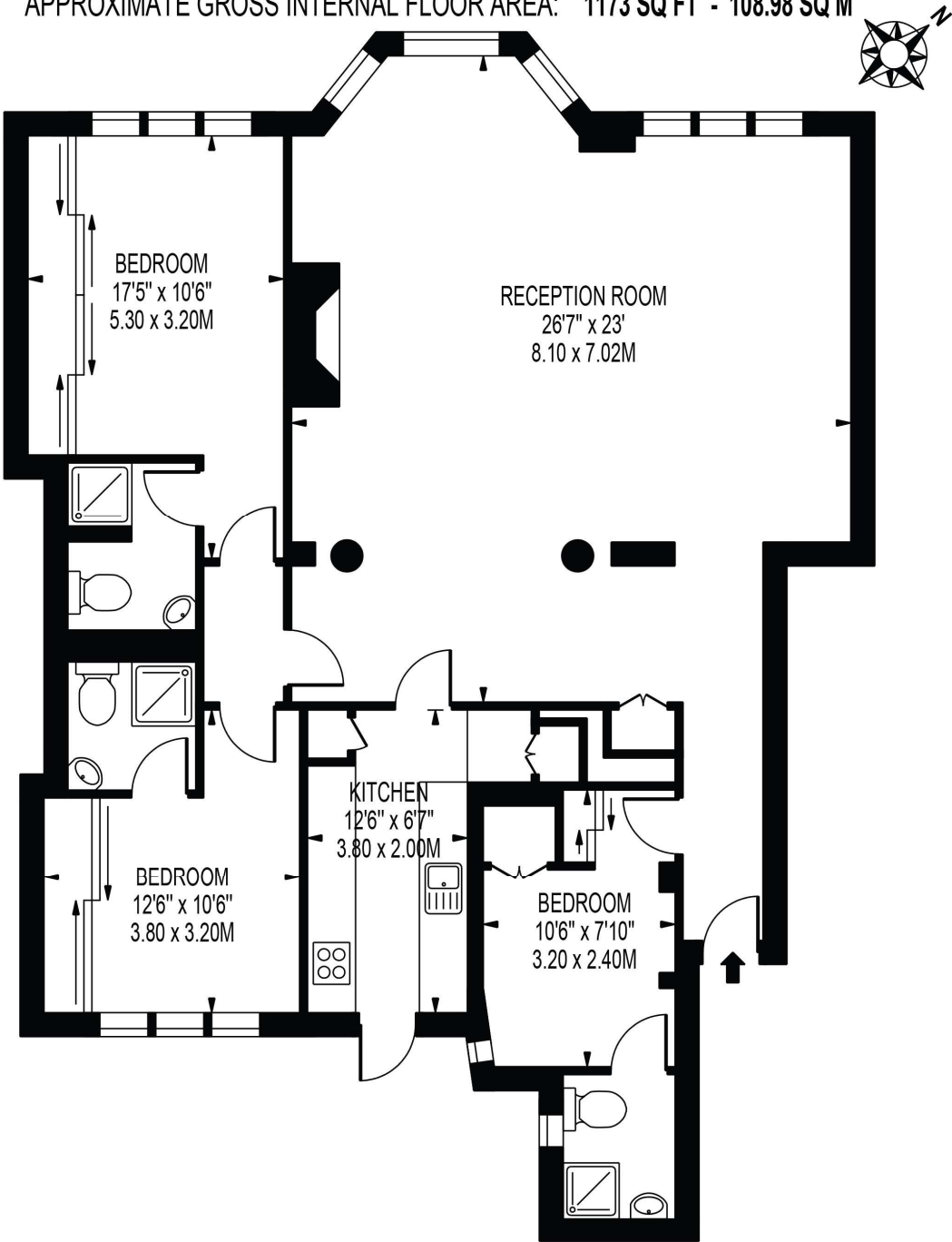
sales.hydepark@bhhs-london.com



FLOORPLAN

ALBION GATE, ALBION STREET

APPROXIMATE GROSS INTERNAL FLOOR AREA: 1173 SQ FT - 108.98 SQ M



FOR ILLUSTRATION PURPOSES ONLY

THIS FLOOR PLAN SHOULD BE USED AS A GENERAL OUTLINE FOR GUIDANCE ONLY AND DOES NOT CONSTITUTE IN WHOLE OR IN PART AN OFFER OR CONTRACT. ANY INTENDING PURCHASER OR LESSEE SHOULD SATISFY THEMSELVES BY INSPECTION, SEARCHES, ENQUIRIES AND FULL SURVEY AS TO THE CORRECTNESS OF EACH STATEMENT. ANY AREAS, MEASUREMENTS OR DISTANCES QUOTED ARE APPROXIMATE AND SHOULD NOT BE USED TO VALUE A PROPERTY OR BE THE BASIS OF ANY SALE OR LET.