



A Bright and Spacious Three Bedroom
Apartment in a Portered Block

UPPER BERKELEY STREET

MARYLEBONE, W1H

Asking Price
£1,600,000

**BERKSHIRE
HATHAWAY**
HOMESERVICES

LONDON

PROPERTY DETAILS

Guide Price £1,600,000	Square Footage 985
Council Tax Band G	EPC C
Ground Rent £1,600 pa	Service Charge £19,588 pa
Tenure Leasehold 124 years	

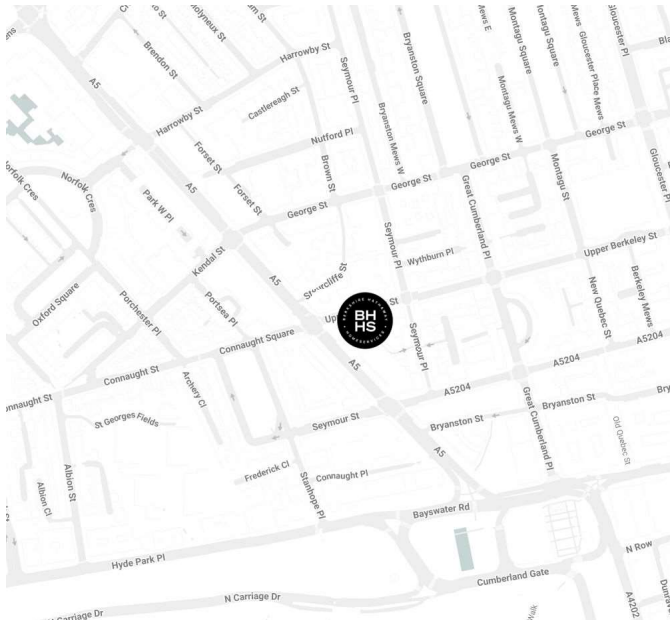
This spacious flat measures in excess of 1100 square feet and has excellent proportions throughout. Upon entering the apartment you are met with a fantastic feeling of light and space. The property comprises a modern and well-equipped kitchen, a large reception rooms with plenty of space for entertaining and dining, three spacious bedrooms, a modern bathroom and plenty of storage on offer throughout.

Located on Upper Berkeley Street, the apartment is perfectly positioned to take advantage of the array of great eateries, coffee shops, and bars in Marylebone Village and Marylebone High Street. Marble Arch station is also close-by giving access to the Central Line.

FEATURES

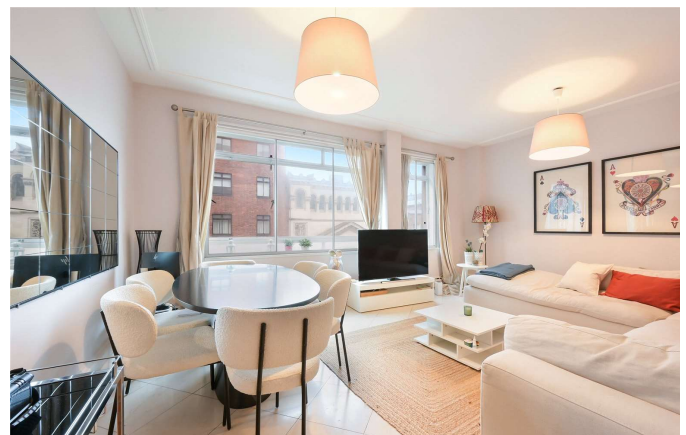
- Three Bedrooms
- One Reception Room
- Two Bathrooms
- Concierge / Porter
- Lift
- Upper Floor

LOCATION



MARYLEBONE SALES
20A Paddington Street, W1U 5QP

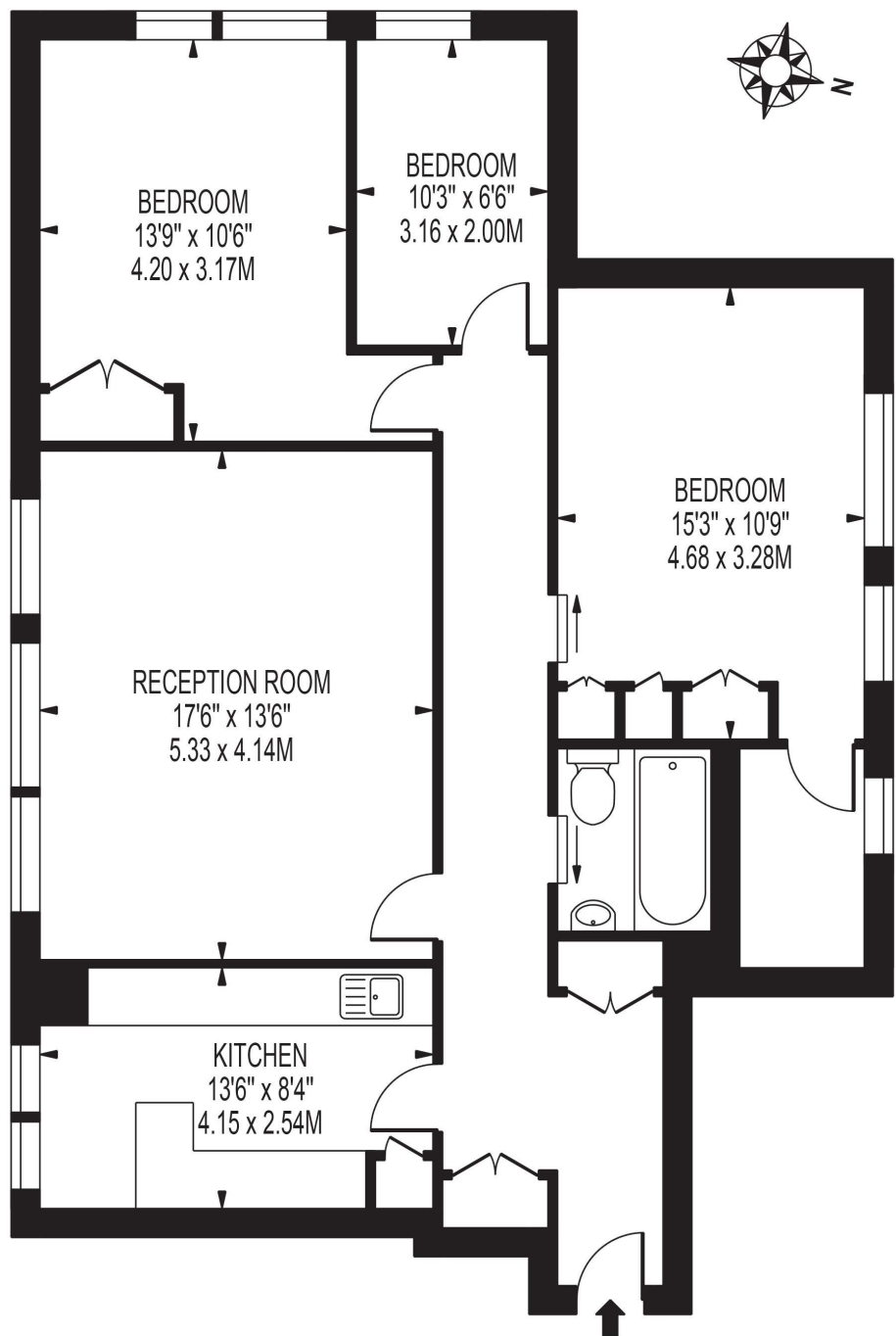
020 7486 6338
sales.marylebone@bhhs-london.com



FLOORPLAN

UPPER BERKELEY STREET

APPROXIMATE GROSS INTERNAL FLOOR AREA: 985 SQ FT - 91.54 SQ M



FOR ILLUSTRATION PURPOSES ONLY

THIS FLOOR PLAN SHOULD BE USED AS A GENERAL OUTLINE FOR GUIDANCE ONLY AND DOES NOT CONSTITUTE IN WHOLE OR IN PART AN OFFER OR CONTRACT. ANY INTENDING PURCHASER OR LESSEE SHOULD SATISFY THEMSELVES BY INSPECTION, SEARCHES, ENQUIRIES AND FULL SURVEY AS TO THE CORRECTNESS OF EACH STATEMENT. ANY AREAS, MEASUREMENTS OR DISTANCES QUOTED ARE APPROXIMATE AND SHOULD NOT BE USED TO VALUE A PROPERTY OR BE THE BASIS OF ANY SALE OR LET.