



A Spacious Three Bedroom Maisonette in a Period Building  
arranged over Three Floors in the Heart of Fitzrovia

# WARREN STREET

FITZROVIA, W1T

Asking Price  
£1,300,000

**BERKSHIRE  
HATHAWAY**  
HOMESERVICES

LONDON



# PROPERTY DETAILS

<b>Guide Price</b> £1,300,000	<b>Square Footage</b> 1255
<b>Council Tax Band</b> G	<b>EPC</b> To be confirmed
<b>Tenure</b> Leasehold 60 years 11 months	

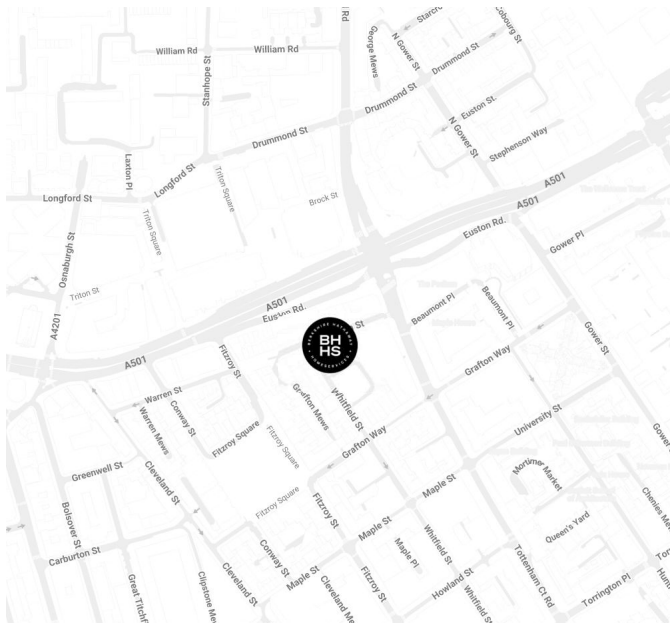
A spacious 1,255 sq ft, three bedroom maisonette in a period building arranged over three floors with entrance at street level. Warren Street is situated in the heart of Fitzrovia and perfectly located for the numerous restaurants and shopping amenities the area has to offer. The nearest Underground Station is Warren Street.

This would make the perfect home or investment opportunity.

## FEATURES

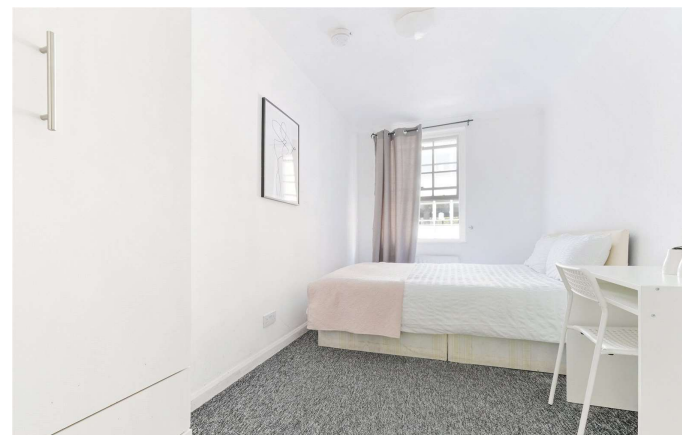
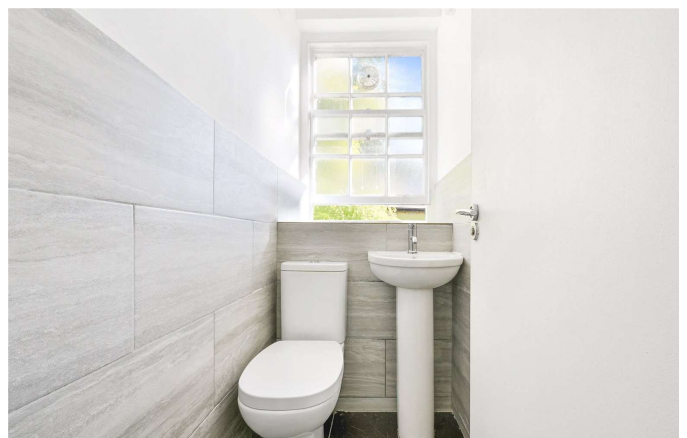
- Three Bedrooms
- One Reception Room
- Two Bathrooms
- Maisonette
- Period

## LOCATION



**MARYLEBONE SALES**  
20A Paddington Street, W1U 5QP

020 7486 6338  
sales.marylebone@bhhs-london.com



# FLOORPLAN

**Warren Street, W1**

Approx. Gross Internal Area \*  
1255 Sq Ft - 116.59 Sq M



Illustration For Identification Purposes Only. Not To Scale  
\*Floorplans Drawn According To RICS Guidelines  
Tel : 07976 232758 / 9 www.totalvista.co.uk  
© Totalvista 2007 (br)