



A Stunning One Bedroom Flat on the Second Floor of an Attractive Period Conversion.

HEREFORD ROAD

BAYSWATER, W2

Asking Price
£685,000

**BERKSHIRE
HATHAWAY**
HOMESERVICES

LONDON

PROPERTY DETAILS

Guide Price	Square Footage
£685,000	538

Council Tax Band E **EPC** C

Tenure	Service Charge
Leasehold	£4,000 pa

A stunning one bedroom flat on the second floor of an attractive period conversion. The property benefits from wooden floors and comprises open plan kitchen and reception room, large double bedroom and modern bathroom. The reception room has attractive views over Leinster Square and the property also has access to the communal gardens at Leinster Square.

This property offers fantastic access to local shops and restaurants. Moreover, it is excellently connected to transport hubs, with Bayswater Station (Circle and District Line) and Queensway Station (Central Line) in close proximity.

FEATURES

One Bedroom

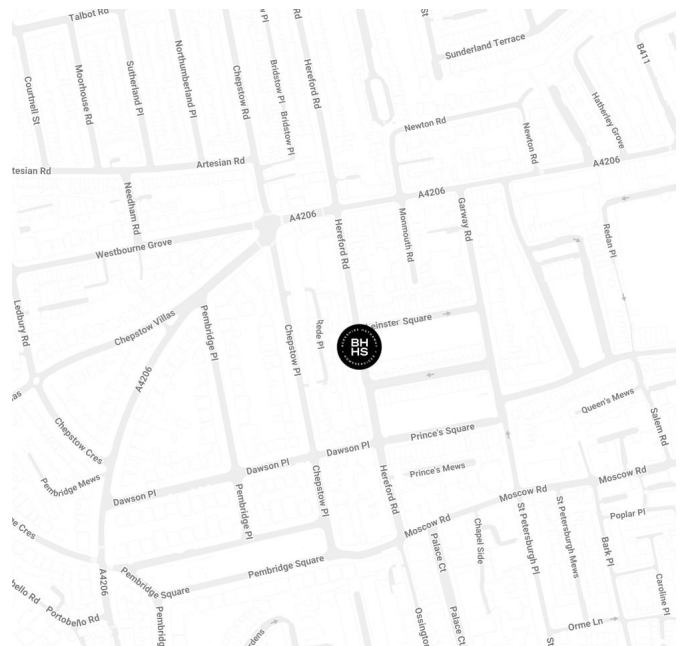
One Reception Room

One Bathroom

Second Floor

Communal Gardens

LOCATION

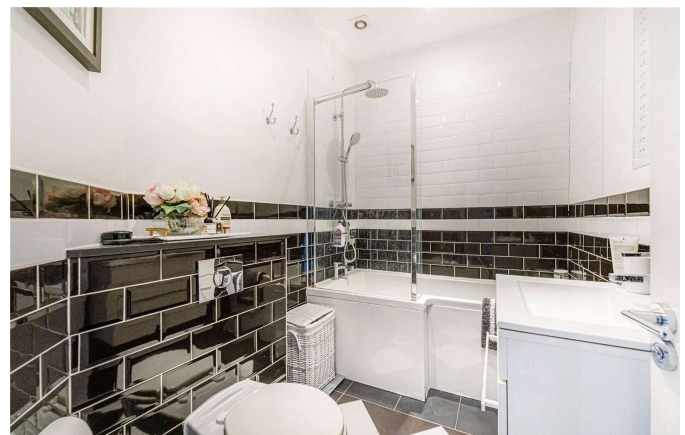


HYDE PARK SALES

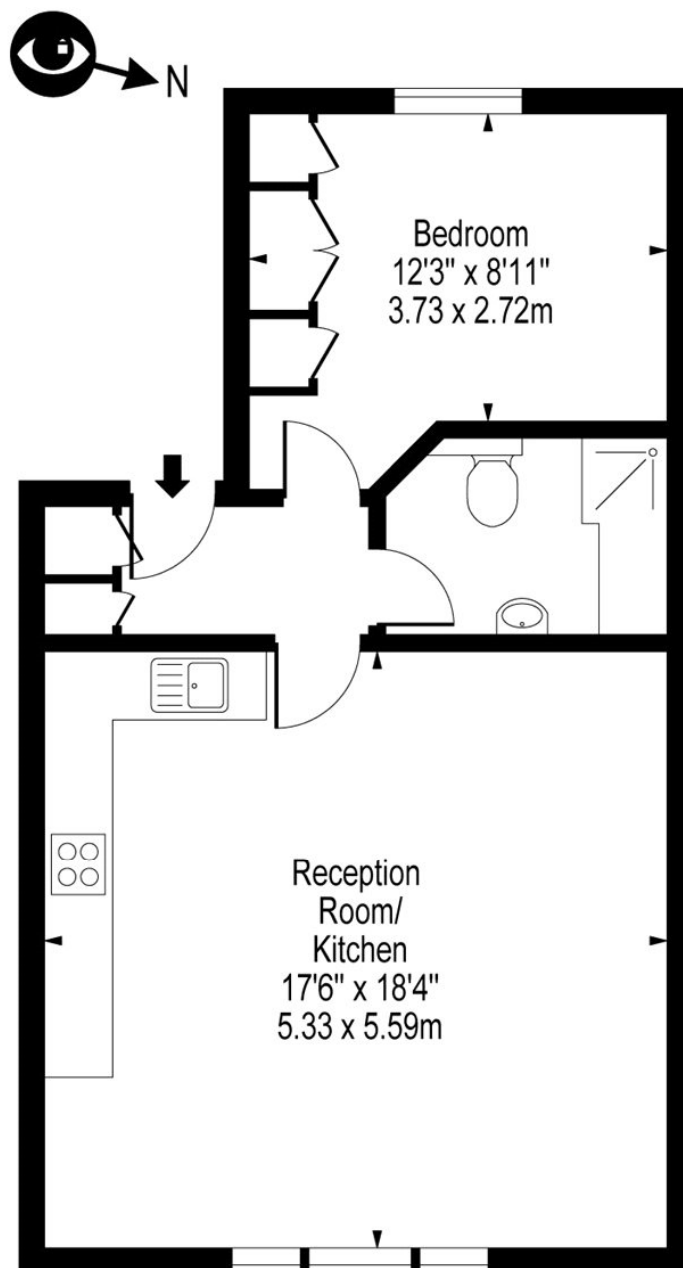
24-25 Albion Street, W2 2AX

020 7262 2030

sales.hydepark@bhhs-london.com



FLOORPLAN



Second Floor

Approx Gross Internal Area 538 Sq Ft - 49.98 Sq M

For Illustration Purposes Only - Not To Scale

Floor Plan by www.bpmmediagroup.com

Ref: No. P52219