



A Beautiful, Refurbished One Bedroom Flat on  
the Third Floor of a Period Building

# CRAVEN ROAD

BAYSWATER, W2

Asking Price  
£540,000

**BERKSHIRE  
HATHAWAY**  
HOMESERVICES

LONDON

# PROPERTY DETAILS

<b>Guide Price</b> £540,000	<b>Square Footage</b> 417
<b>Council Tax Band</b> D	<b>EPC</b> D
<b>Tenure</b> Leasehold	<b>Service Charge</b> £3500

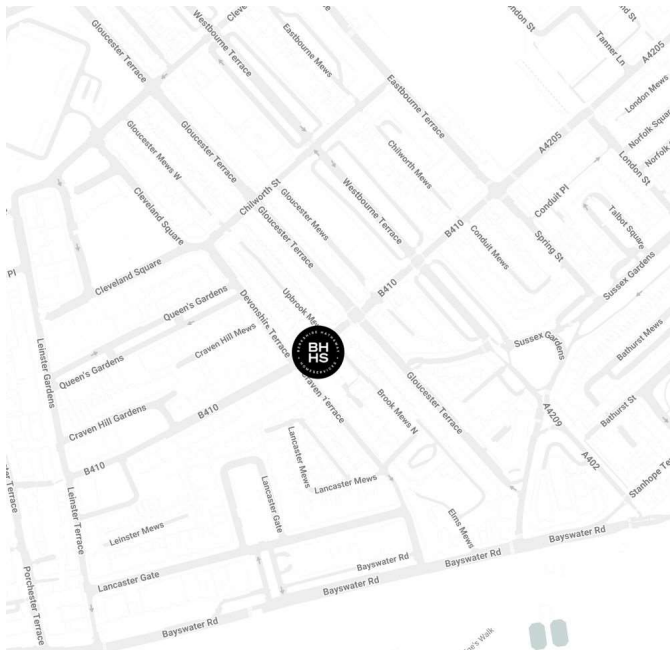
A beautiful, refurbished one bedroom flat on the third floor of a period building in Bayswater. The property comprises an open plan kitchen/reception room, double bedroom with built-in storage and a modern shower room. The property is in excellent condition throughout with plenty of space and natural light.

This property offers fantastic access to local shops and restaurants. Moreover, it is excellently connected to transport hubs, with Bayswater Station (Circle and District Line) and Queensway Station (Central Line) in close proximity.

## FEATURES

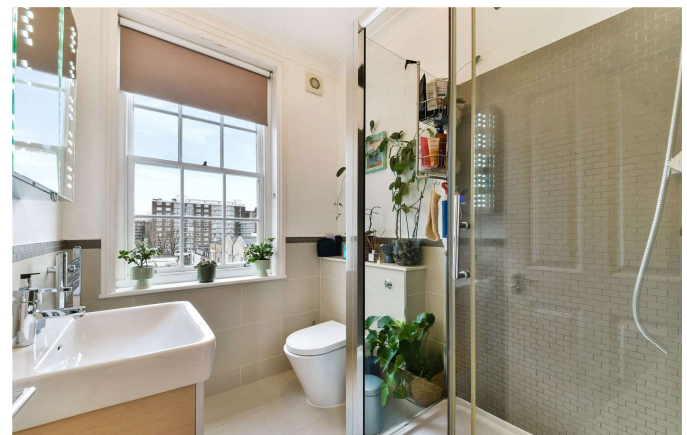
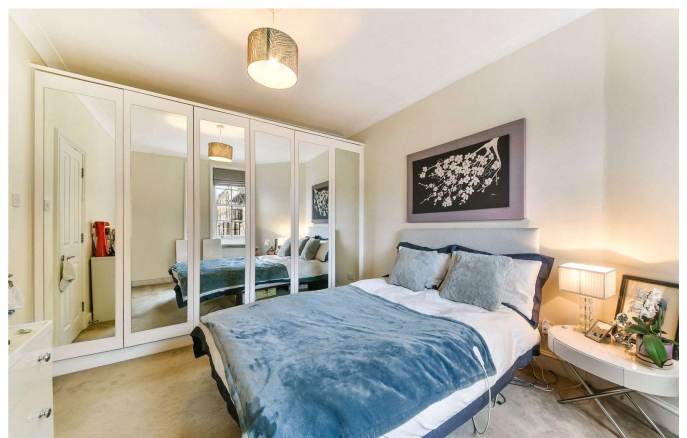
- One Bedroom
- One Reception Room
- One Bathroom
- Third Floor

## LOCATION



**HYDE PARK SALES**  
24-25 Albion Street, W2 2AX

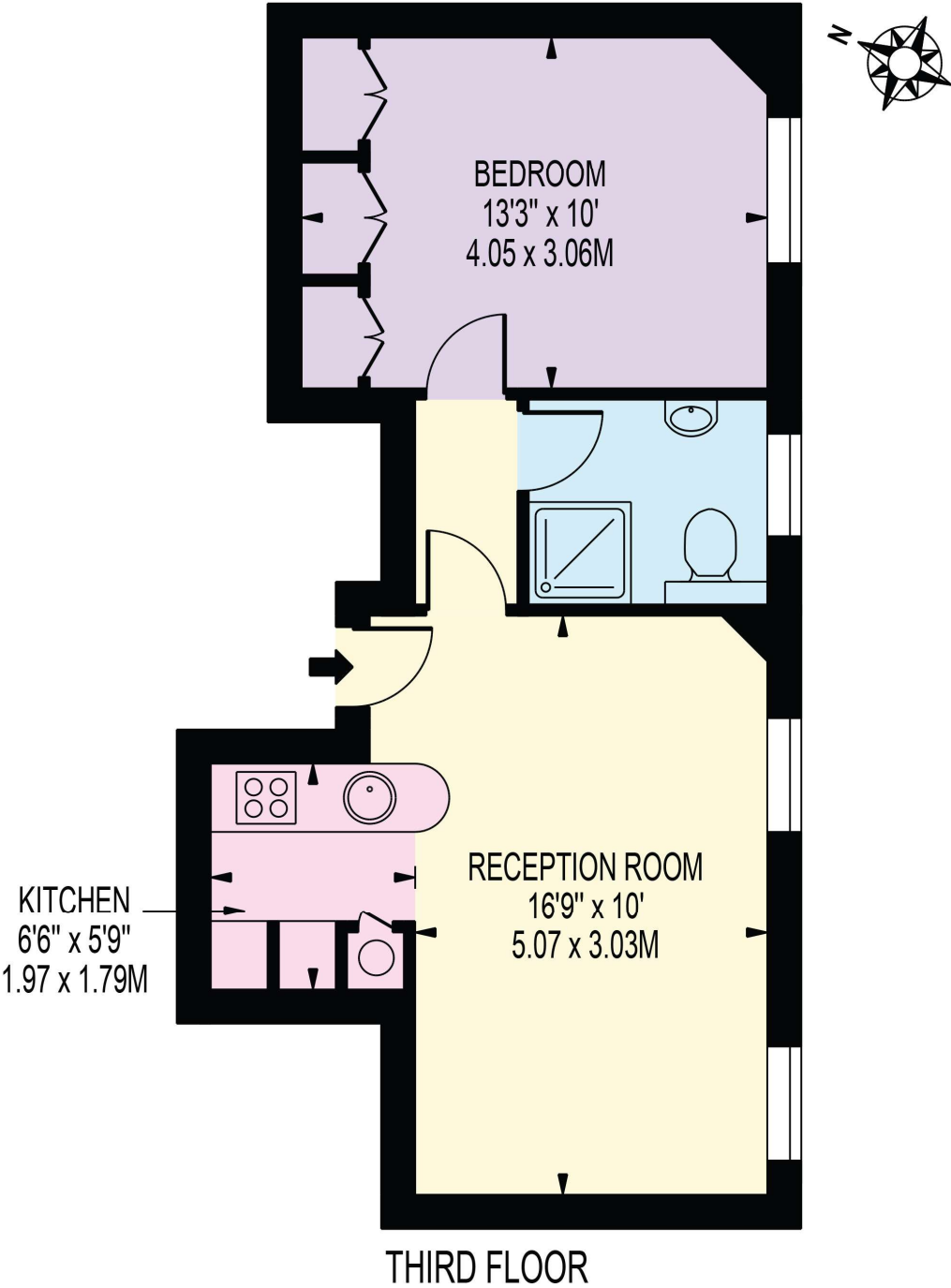
020 7262 2030  
sales.hydepark@bhhs-london.com



# FLOORPLAN

## CRAVEN COURT

APPROXIMATE GROSS INTERNAL FLOOR AREA: 417 SQ FT - 38.72 SQ M



### THIRD FLOOR

FOR ILLUSTRATION PURPOSES ONLY

THIS FLOOR PLAN SHOULD BE USED AS A GENERAL OUTLINE FOR GUIDANCE ONLY AND DOES NOT CONSTITUTE IN WHOLE OR IN PART AN OFFER OR CONTRACT. ANY INTENDING PURCHASER OR LESSEE SHOULD SATISFY THEMSELVES BY INSPECTION, SEARCHES, ENQUIRIES AND FULL SURVEY AS TO THE CORRECTNESS OF EACH STATEMENT. ANY AREAS, MEASUREMENTS OR DISTANCES QUOTED ARE APPROXIMATE AND SHOULD NOT BE USED TO VALUE A PROPERTY OR BE THE BASIS OF ANY SALE OR LET.