



Charming and Central One Bedroom in Prime Bloomsbury

BIDBOROUGH STREET

BLOOMSBURY, WC1H

Asking Price
£399,950

**BERKSHIRE
HATHAWAY**
HOMESERVICES

LONDON

PROPERTY DETAILS

| | |
|------------------------------------|-----------------------------------|
| Guide Price £399,950 | Square Footage 313 |
| Council Tax Band D | EPC D |
| Tenure Share of Freehold | Service Charge £1161.74 |

A bright and charming one bedroom with additional kitchen/diner and period features in this popular Edwardian red brick mansion block in prime Bloomsbury.

Queen Alexandra Mansions benefits from a communal roof terrace and live in caretaker and is convenient for the Brunswick Centre with its shops, cinema, and eateries.

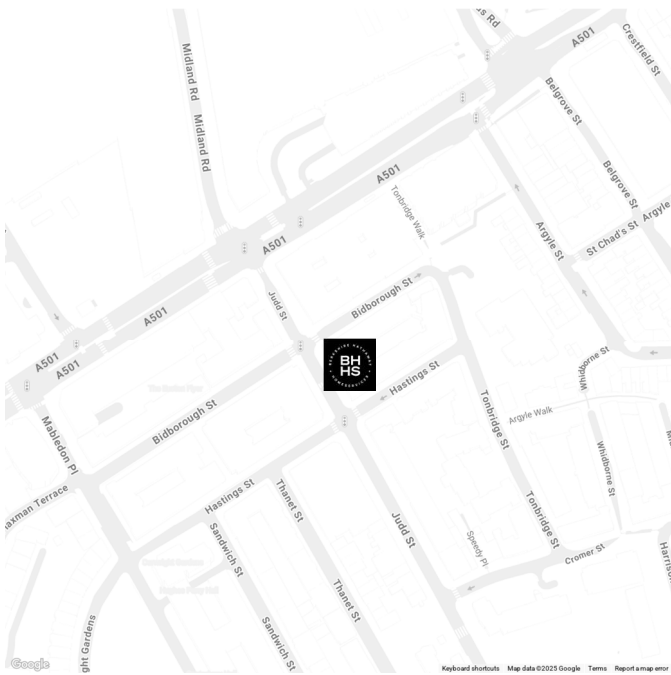
UCL, UCH and LSE are also close by.

Vibrant Coal Drops Yard and Granary Square are also right on your doorstep, and nearby links include St. Pancras International and King's Cross Station (Northern, Victoria, Hammersmith & City, Metropolitan, Circle and Piccadilly lines, National Rail) with frequent services into the City and the West End.

FEATURES

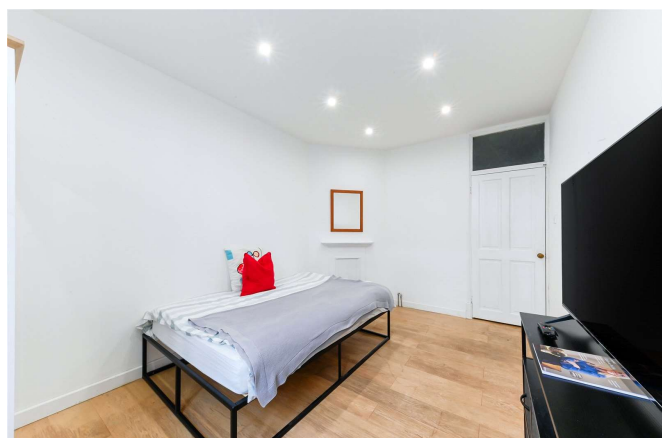
- One Bedroom
- One Reception Room
- One Bathroom
- Wood Flooring
- Basement
- Communal Roof Terrace

LOCATION



KINGS CROSS SALES
Unit 4,6 Pancras Square, N1C 4AG

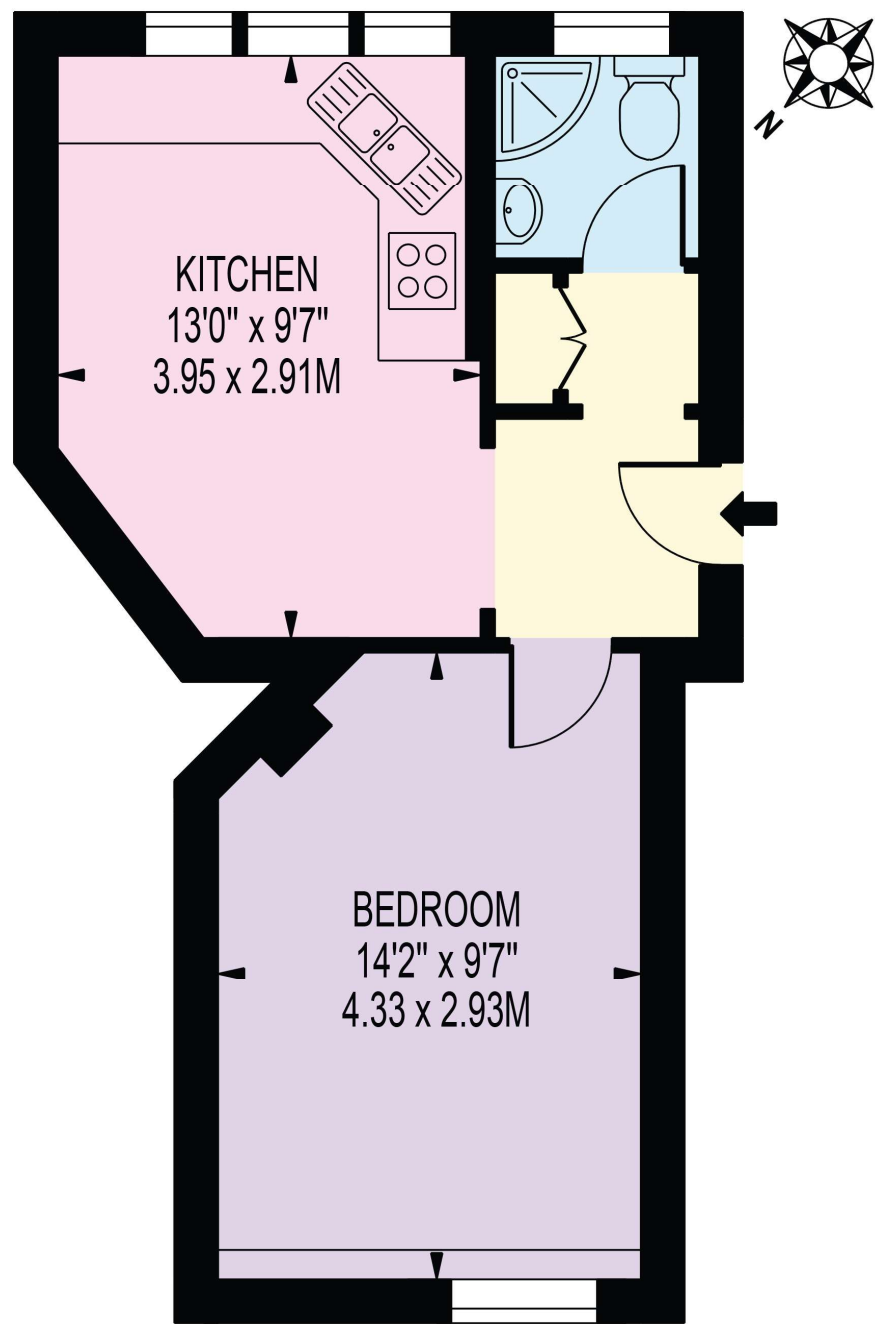
020 7467 2020
sales.kingscross@bhhs-london.com



FLOORPLAN

QUEEN ALEXANDRA MANSIONS

APPROXIMATE GROSS INTERNAL FLOOR AREA: 313 SQ FT - 29.08 SQ M



LOWER GROUND FLOOR

FOR ILLUSTRATION PURPOSES ONLY

THIS FLOOR PLAN SHOULD BE USED AS A GENERAL OUTLINE FOR GUIDANCE ONLY AND DOES NOT CONSTITUTE IN WHOLE OR IN PART AN OFFER OR CONTRACT. ANY INTENDING PURCHASER OR LESSEE SHOULD SATISFY THEMSELVES BY INSPECTION, SEARCHES, ENQUIRIES AND FULL SURVEY AS TO THE CORRECTNESS OF EACH STATEMENT. ANY AREAS, MEASUREMENTS OR DISTANCES QUOTED ARE APPROXIMATE AND SHOULD NOT BE USED TO VALUE A PROPERTY OR BE THE BASIS OF ANY SALE OR LET.