



Two Bedroom Apartment Overlooking the
Communal Water Gardens

THE WATER GARDENS

HYDE PARK, W2

£1,000 per week

**BERKSHIRE
HATHAWAY**
HOMESERVICES

LONDON

PROPERTY DETAILS

Guide Price
£1,000 per week

Square Footage
742

Council Tax Band
F

EPC Rating
D

This well presented two bedroom apartment sits on the 8th floor (Lift access) with views over the communal water gardens and it sits within a private gated development which benefits from 24 hour porter and security. This apartment comprises, two bedrooms, family bathroom, W/C, open plan kitchen/dining room with separate kitchen.

Located on the edge of Connaught Village, with its artisan coffee shops and boutique shops. The apartment sits moments away from Hyde Park and is easy access for train and tube links via Marble Arch, Paddington and Lancaster Gate.

FEATURES

Two Bedrooms

One Reception Room

Two Bathrooms

Residents Parking

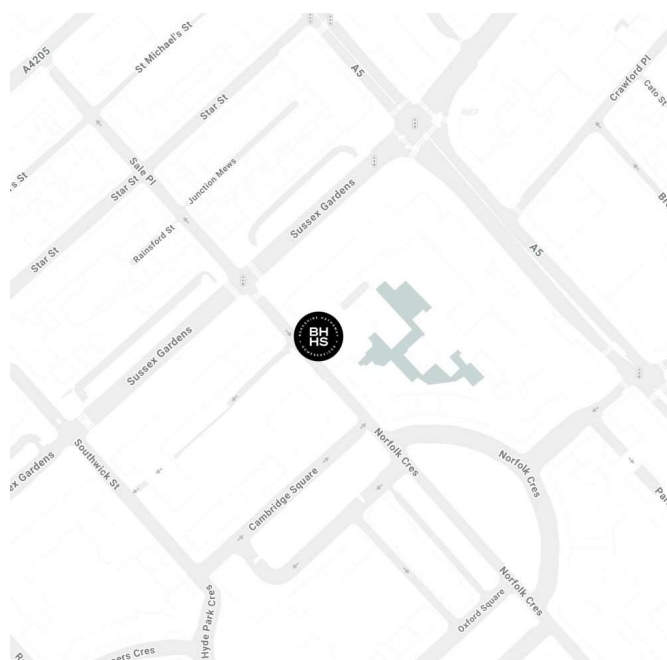
Concierge / Porter

Lift

Overlooking the Water Communal Gardens

Eighth Floor

LOCATION

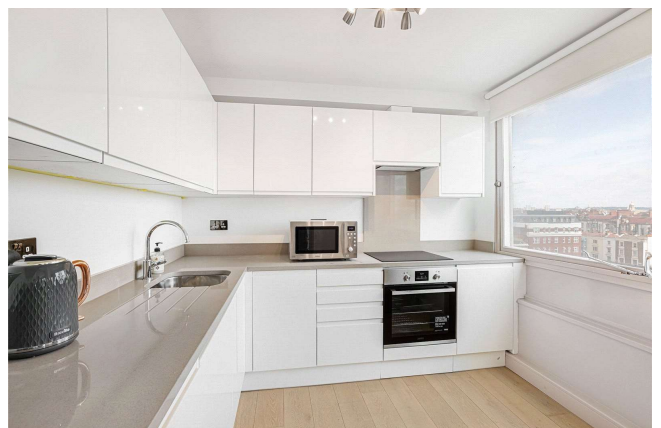
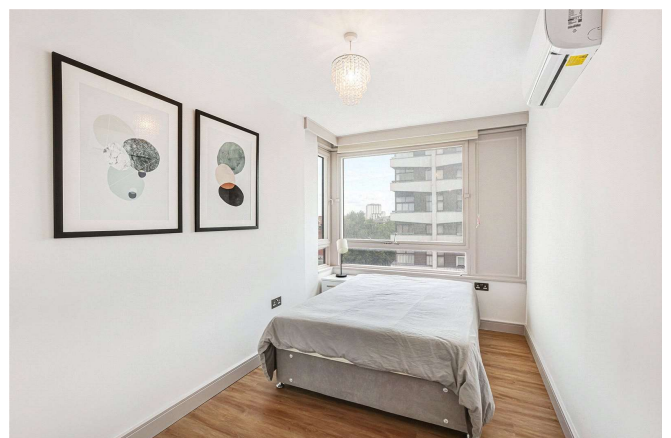


HYDE PARK LETTINGS

24-25 Albion Street, W2 2AX

020 7262 2030

lettings.hydepark@bhhs-london.com



FLOORPLAN

The Water Gardens, W2

Approximate Area = 68.9 sq m / 742 sq ft



Eighth Floor

Approximate Area = 68.9 sq m / 742 sq ft

Surveyed and drawn in accordance with the International property measurements standards (IPMS 2: Residential) Not drawn to scale unless stated. Whilst every care is taken in the preparation of this plan, please check all dimensions, shapes and compass bearings before making any decisions reliant upon them.