



Elegant Two Bedroom Apartment in Luxury New Development

# PARK DRIVE

CANARY WHARF, E14

£1,500 per week

**BERKSHIRE  
HATHAWAY**  
HOMESERVICES

LONDON

# PROPERTY DETAILS

<b>Guide Price</b> £1,500 per week	<b>Square Footage</b> 1114
<b>Council Tax Band</b> F	<b>EPC Rating</b> B

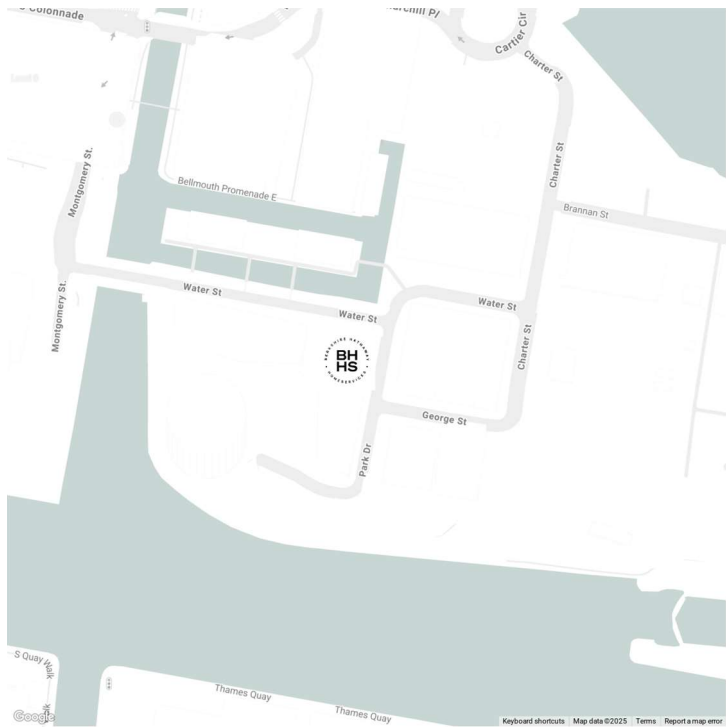
We are delighted to present this exceptional two-bedroom apartment located on the 37th floor of the iconic 10 Park Drive – a landmark residential tower in the heart of Wood Wharf, Canary Wharf’s newest and most vibrant neighbourhood. Designed by the internationally acclaimed architects Stanton Williams, this 42-storey building stands as a striking example of contemporary London living, with beautifully considered interiors, premium amenities, and panoramic views.

Transport links are excellent, with Canary Wharf Station (Jubilee Line & Elizabeth Line) just 5 minutes away, Heron Quays and West India Quay DLR just minutes away, offering fast and direct access to the City, West End, Heathrow, and beyond. Once the site of London’s docklands, Canary Wharf has evolved into a vibrant destination for modern living, and 10 Park Drive is at the centre of it all.

## FEATURES

- Two Bedrooms
- One Reception Room
- Two Bathrooms
- Concierge/ Porter
- Upper Floor
- Furnished
- Balcony, Communal Gardens
- Lift

## LOCATION

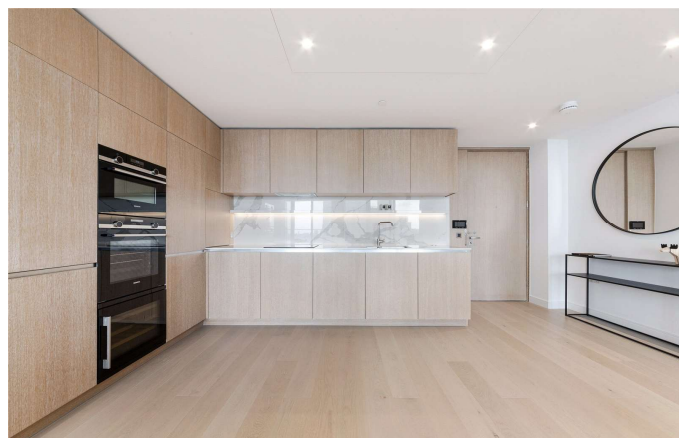


### MARYLEBONE LETTINGS

20A Paddington Street, W1U 5QP

020 7486 6338

lettings.marylebone@bhhs-london.com

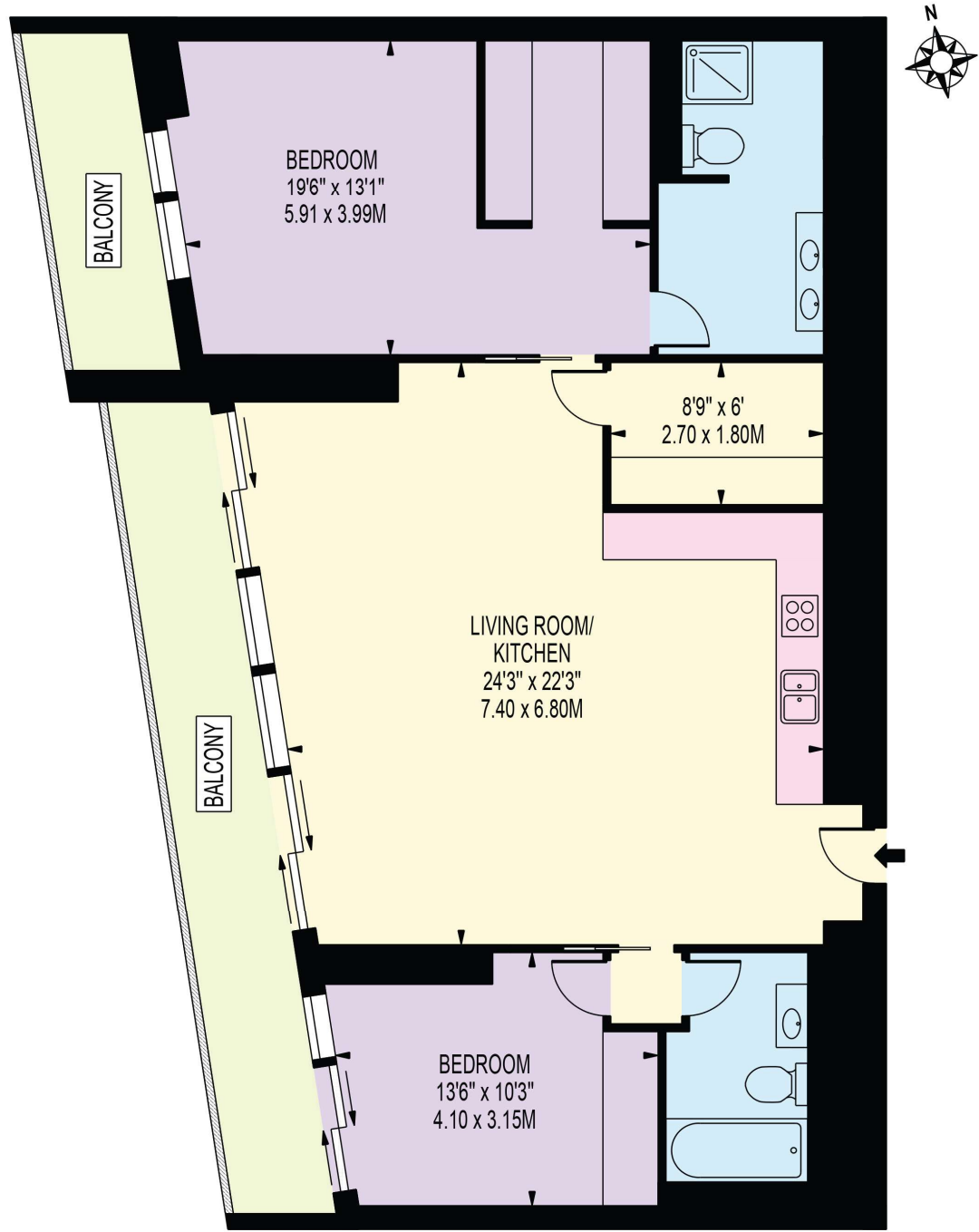




# FLOORPLAN

## PARK DRIVE

APPROXIMATE GROSS INTERNAL FLOOR AREA: 1114 SQ FT - 103.49 SQ M



THIRTY SEVENTH FLOOR

FOR ILLUSTRATION PURPOSES ONLY

THIS FLOOR PLAN SHOULD BE USED AS A GENERAL OUTLINE FOR GUIDANCE ONLY AND DOES NOT CONSTITUTE IN WHOLE OR IN PART AN OFFER OR CONTRACT. ANY INTENDING PURCHASER OR LESSEE SHOULD SATISFY THEMSELVES BY INSPECTION, SEARCHES, ENQUIRIES AND FULL SURVEY AS TO THE CORRECTNESS OF EACH STATEMENT. ANY AREAS, MEASUREMENTS OR DISTANCES QUOTED ARE APPROXIMATE AND SHOULD NOT BE USED TO VALUE A PROPERTY OR BE THE BASIS OF ANY SALE OR LET.