



Beautiful Apartment Arranged over Two Floors Close  
to Hyde Park

# WESTBOURNE CRESCENT

BAYSWATER, W2

£1,495 per week

**BERKSHIRE  
HATHAWAY**  
HOMESERVICES

LONDON

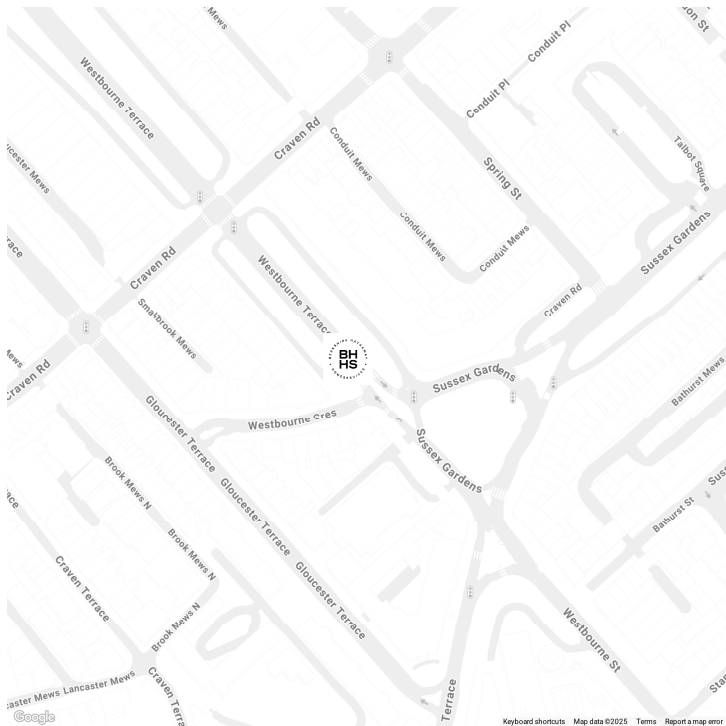
# PROPERTY DETAILS

<b>Guide Price</b> £1,495 per week	<b>Square Footage</b> 1351	<p>This beautiful two-bedroom apartment offers a sophisticated and comfortable living space spread across the ground and lower ground floor of an elegant period building. With two modern ensuite bathrooms and separate W.C, a charming patio garden, and convenient access to transport links such as Lancaster Gate and Paddington Station.</p> <p>Situated close to Hyde Park, its also benefits from the wide open spaces it provides.</p>
<b>Council Tax Band</b> F	<b>EPC Rating</b> C	

## FEATURES

- Two Bedrooms
- One Reception Room
- Three Bathrooms
- Garden
- Modern
- Long Let

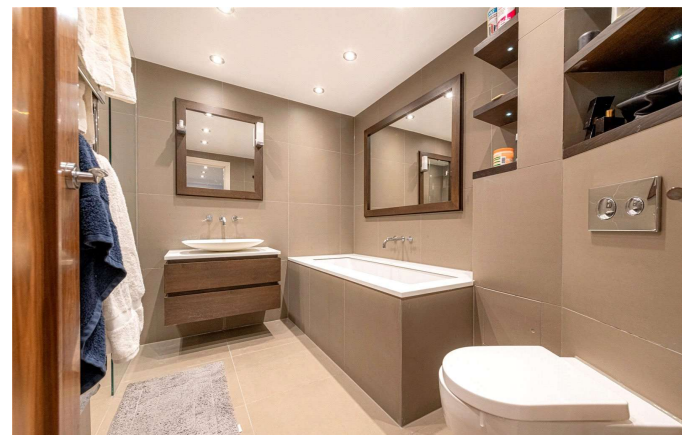
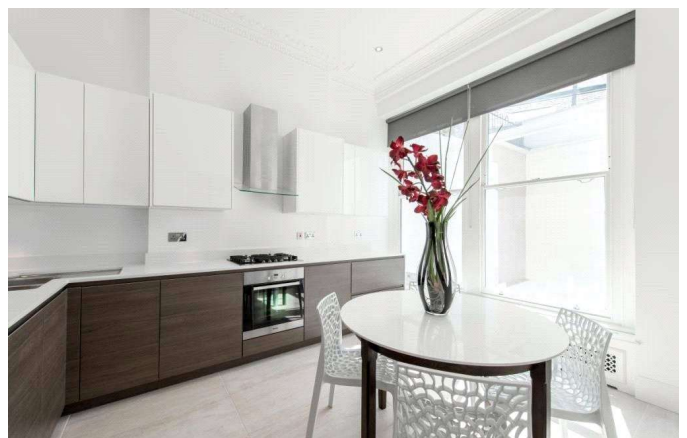
## LOCATION



**HYDE PARK LETTINGS**  
24-25 Albion Street, W2 2AX

020 7262 2030  
lettings.hydepark@bhhs-london.com





# FLOORPLAN

---