



An Exceptional House Near Hyde Park

STANHOPE TERRACE

HYDE PARK, W2

£8,000 per week

**BERKSHIRE
HATHAWAY**
HOMESERVICES

LONDON

PROPERTY DETAILS

Guide Price
£8,000 per week

Square Footage
2,970

Council Tax
H

EPC Rating
C

SHORT LET This stunning 5-bedroom white stucco house on the prestigious Stanhope Terrace offers an exceptional blend of modern luxury and timeless elegance. Spanning nearly 3,000 square feet, this home has been immaculately redesigned by the current owner to an impeccable standard, showcasing meticulous attention to detail and superior craftsmanship throughout.

Upon entering, you're greeted by an inviting ambiance, highlighted by expansive large windows that flood the interiors with natural light. The heart of the home is the beautifully designed open-plan kitchen, seamlessly blending functionality with style. Featuring top-of-the-line appliances, sleek finishes, and a spacious layout, it is perfect for both everyday living and entertaining.

The property boasts five generously sized bedrooms, each thoughtfully designed to offer comfort and sophistication. Adding to its allure is a luxurious cinema room, creating the ideal space for movie nights or relaxing with family and friends.

Set on one of the most sought-after streets, this residence offers not only exquisite interiors but also a prime location, ensuring an unparalleled living experience. Whether you're drawn by its contemporary elegance or its perfect balance of form and function, this home is truly a masterpiece ready to be enjoyed.

Additionally, the property is perfectly situated just moments from the open green spaces of Hyde Park, offering a serene retreat from city life. Its prime location also provides excellent transport links, with Lancaster Gate and Paddington stations nearby, ensuring seamless connectivity across London and beyond.

FEATURES

Five Bedrooms

Three Reception Rooms

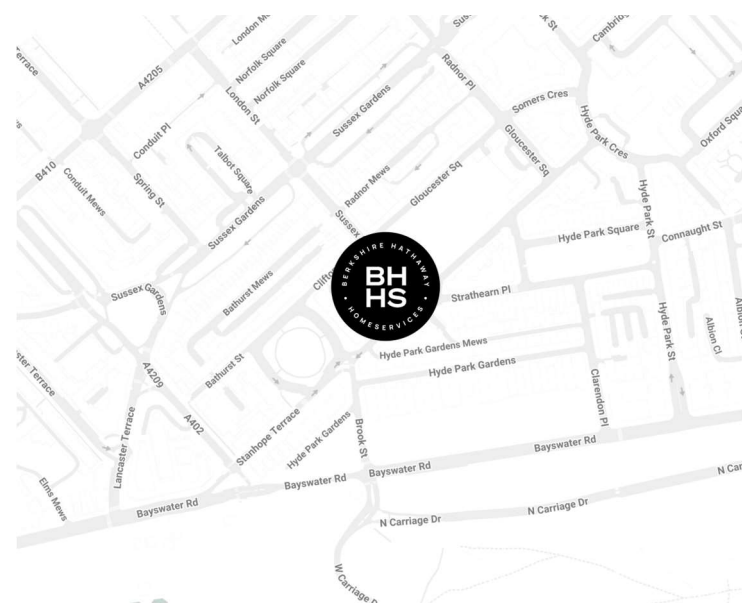
Three Bathrooms

Residents Parking

Terraced

Patio

LOCATION

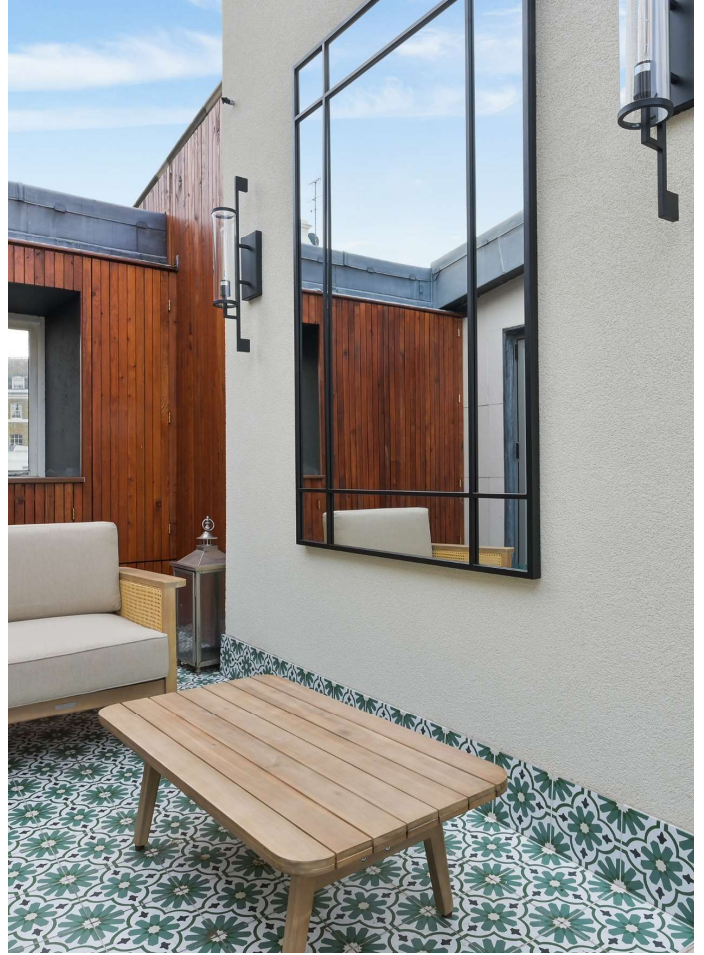


HYDE PARK LETTINGS

24-25 Albion Street, W2 2AX

020 7262 2030

lettings.hydepark@bhslondon.com

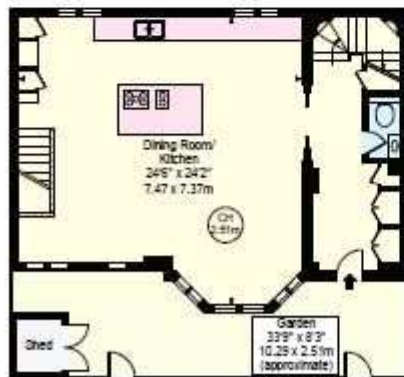
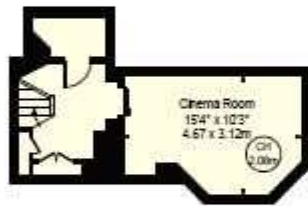
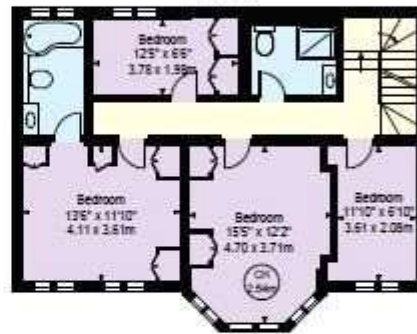
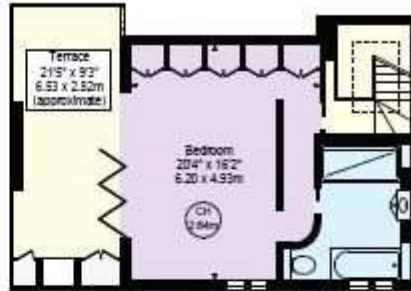


FLOORPLAN

Stanhope Terrace

Approx. Gross Internal Area 2970 Sq Ft - 275.92 Sq M
(Excluding Shed)

Approx. External Area Of Terrace 198 Sq Ft - 18.41 Sq M



For Illustration Purposes Only - Not To Scale

This floor plan should be used as a general outline for guidance only and does not constitute in whole or in part an offer or contract. Any intending purchaser or lessee should satisfy themselves by inspection, searches, enquiries and full survey as to the correctness of each statement. Any areas, measurements or distances quoted are approximate and should not be used to value a property or be the basis of any sale or let.