



A Fantastic House Located on Clarendon Mews
in W2

CLARENDON MEWS

HYDE PARK ESTATE, W2

Asking Price
£1,300,000

**BERKSHIRE
HATHAWAY**
HOMESERVICES

LONDON

PROPERTY DETAILS

Guide Price £1,300,000	Square Footage 734
Council Tax Band G	EPC C
Tenure Freehold	

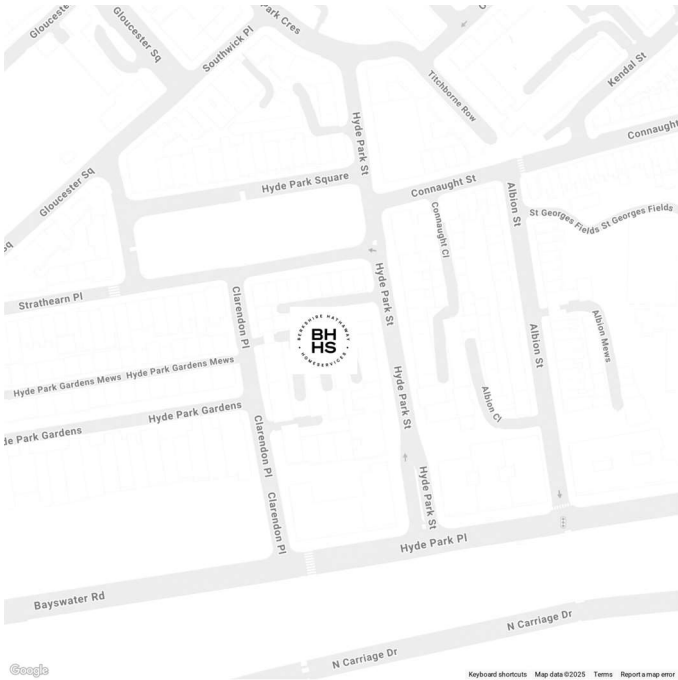
We are delighted to present this charming period terraced house located in a sought-after residential area on Clarendon Mews in Connaught Village. This beautifully maintained property boasts two bedrooms, one reception room, and two bathrooms, providing ample living space for a small family or professionals. The interior features a modern kitchen with integrated appliances, a cosy living room, and well-appointed bedrooms offering comfort and tranquillity.

The local transport links are outstanding with Marble Arch (Central Line) and Paddington Stations (multiple Underground lines, National Rail, Heathrow Express and soon to be Crossrail) located within a short walk of the property

FEATURES

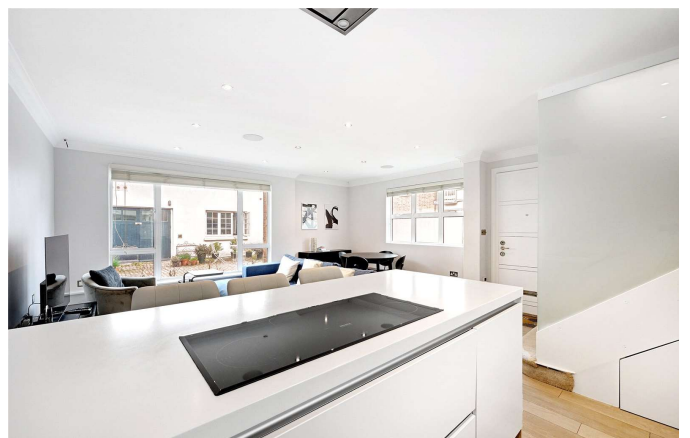
- Two Bedrooms
- One Reception Room
- One Bathroom
- Period
- Mews

LOCATION



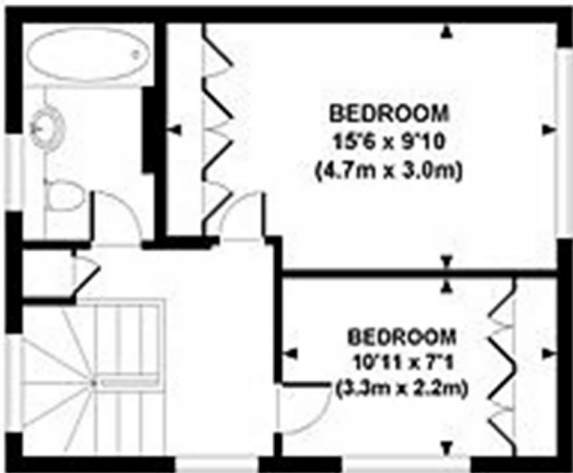
HYDE PARK SALES
24-25 Albion Street, W2 2AX

020 7262 2030
sales.hydepark@bhhs-london.com

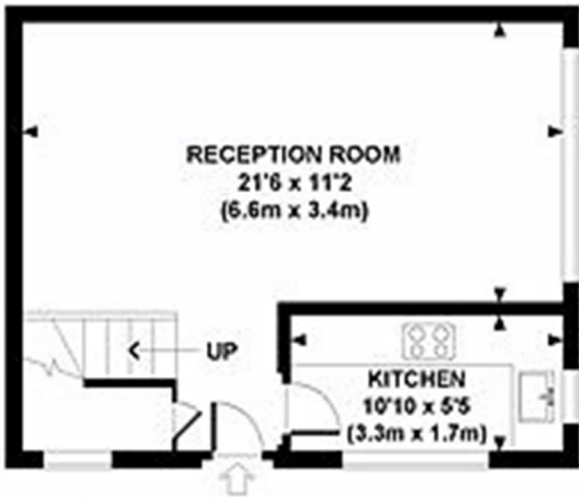


FLOORPLAN

Approx. gross internal area
734 Sq Ft / 68.2 Sq M.



FIRST FLOOR



GROUND FLOOR