



Spacious Four-Storey Maisonette with Roof Terrace in
North Kensington

ST. LAWRENCE TERRACE

NORTH KENSINGTON, W10

£3,045 per week

**BERKSHIRE
HATHAWAY**
HOMESERVICES

LONDON

PROPERTY DETAILS

Guide Price £3,045 per week	Square Footage 1,948
Council Tax Band G	EPC Rating D

An exceptional opportunity to rent this spacious four-storey maisonette in the heart of North Kensington. Arranged over the ground, first, second, and third floors, this impressive property is crowned by a large, private roof terrace offering sweeping panoramic views across London’s skyline.

The home offers generous living space throughout and the layout allows for both comfortable day-to-day living and stylish entertaining, with the top-floor roof terrace providing an enviable outdoor retreat in the city.

Situated just moments from the vibrant amenities of Ladbroke Grove, residents will benefit from excellent local shops, cafés, and restaurants, as well as strong transport links via the nearby Underground station. This is a rare rental opportunity in a desirable neighbourhood, combining substantial space with the charm and convenience of West London living.

FEATURES

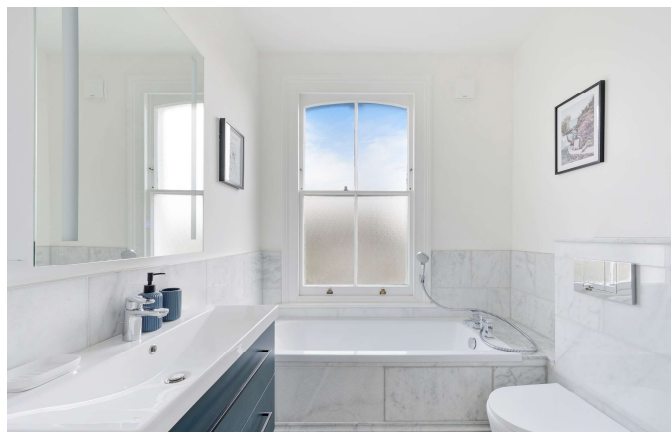
- Four Bedrooms
- One Reception Room
- Three Bathrooms
- Balcony
- Garden/Patio
- Modern

LOCATION



HYDE PARK LETTINGS
24-25 Albion Street, W2 2AX

020 7262 2030
lettings.hydepark@bhhs-london.com



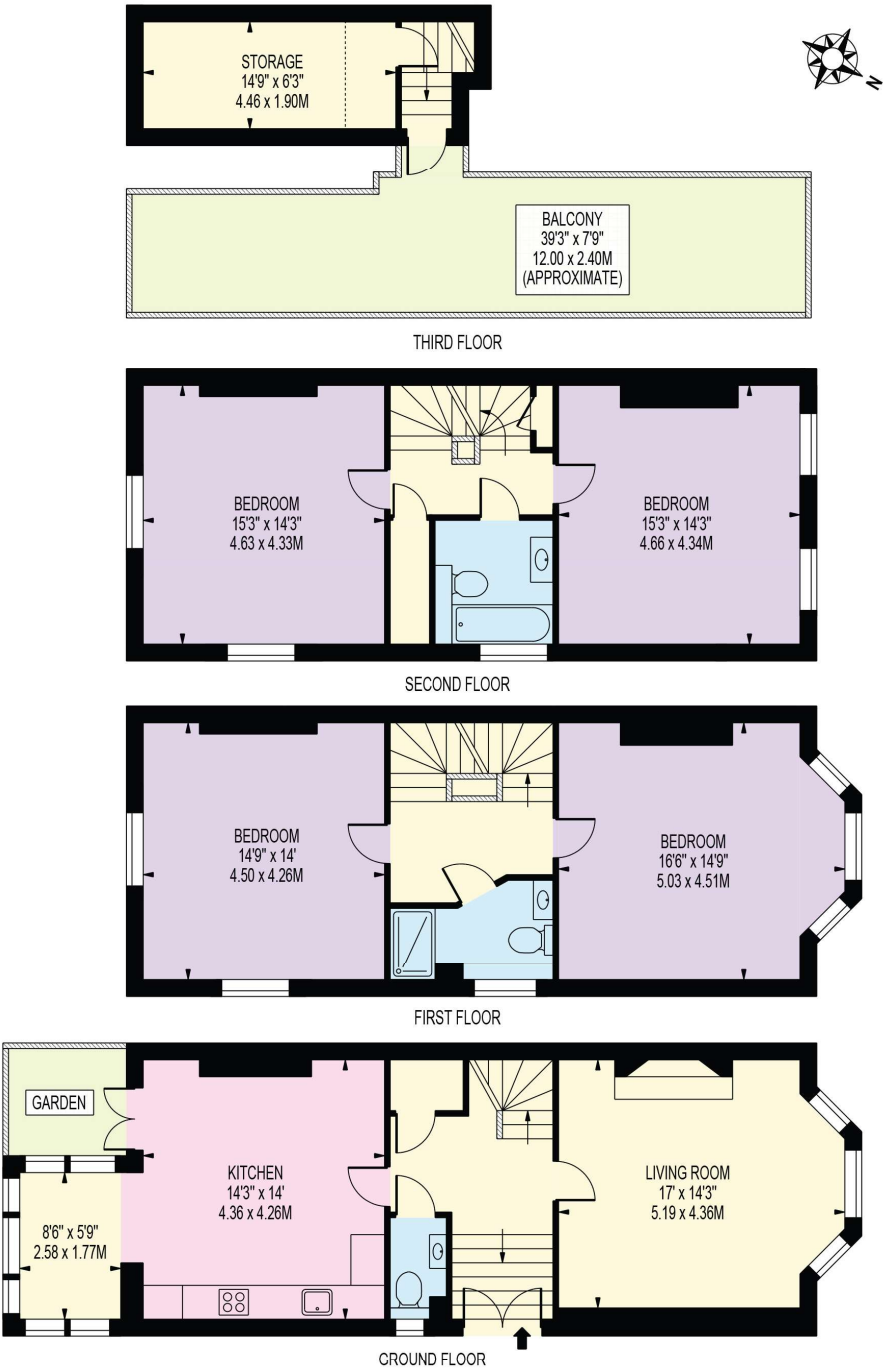
FLOORPLAN

ST. LAWRENCE TERRACE

APPROXIMATE TOTAL INTERNAL FLOOR AREA: 1948 SQ FT - 180.95 SQ M

(INCLUDING RESTRICTED HEIGHT AREA)

APPROXIMATE GROSS INTERNAL FLOOR AREA OF RESTRICTED HEIGHT: 74 SQ FT - 6.84 SQ M



FOR ILLUSTRATION PURPOSES ONLY

THIS FLOOR PLAN SHOULD BE USED AS A GENERAL OUTLINE FOR GUIDANCE ONLY AND DOES NOT CONSTITUTE IN WHOLE OR IN PART AN OFFER OR CONTRACT. ANY INTENDING PURCHASER OR LESSEE SHOULD SATISFY THEMSELVES BY INSPECTION, SEARCHES, ENQUIRIES AND FULL SURVEY AS TO THE CORRECTNESS OF EACH STATEMENT. ANY AREAS, MEASUREMENTS OR DISTANCES QUOTED ARE APPROXIMATE AND SHOULD NOT BE USED TO VALUE A PROPERTY OR BE THE BASIS OF ANY SALE OR LET.