



A Newly Refurbished Apartment in the Award-Winning Imperial Wharf Development

HARBOUR REACH
SW6 2SS

£675 per week

**BERKSHIRE
HATHAWAY**
HOMESERVICES

LONDON

PROPERTY DETAILS

Guide Price £675 per week	Square Footage 0
Council Tax Band G	EPC Rating C

A newly refurbished apartment in the award-winning Imperial Wharf development. This apartment spans approximately 956 sq. ft. and comprises a bright reception room, with space for dining, and floor-to-ceiling windows leading onto a private balcony with views over the river; there are two double bedrooms and two bathrooms (one ensuite). The apartment further benefits from an underground parking space and comfort cooling/warm air heating.

The popular Imperial Wharf development is located on the banks of the River Thames. There are a variety of local shops and restaurants in the development and it is close to some stylish boutiques and bars located on the Kings Road in Chelsea.

The Imperial Wharf rail station is 0.1 miles away and provides quick links to Clapham Junction, Shepherd's Bush (for the Central line and Westfield shopping centre), and Fulham Broadway (District Line) is also close by; there is also an excellent river boat service straight into the city.

FEATURES

- Two Bedrooms
- One Reception Room
- Two Bathrooms
- Balcony
- Communal Gardens
- Concierge/ Porter
- Lift
- Parking

LOCATION

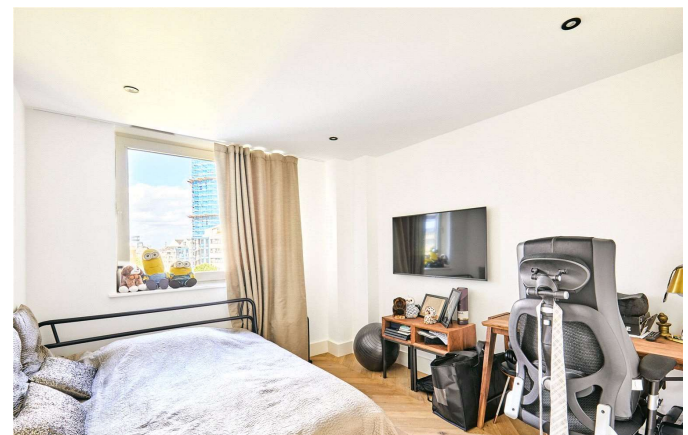


KNIGHTSBRIDGE LETTINGS

55-57 SLOANE AVENUE, SW3 3DH

020 7235 9641

lettings.knightsbridge@bhhs-london.com



FLOORPLAN

