



One Bedroom with Balcony in Iconic Gasholders

LEWIS CUBITT SQUARE

KINGS CROSS, N1C

£850 per week

**BERKSHIRE
HATHAWAY**
HOMESERVICES

LONDON

PROPERTY DETAILS

Guide Price £850 per week	Square Footage 689	A beautifully presented one bedroom apartment with balcony in the iconic Grade II listed Gasholders in King's Cross.
Council Tax Band E	EPC Rating B	Residents benefit from a 24-hour concierge, residents' spa and gym, business suite, entertainment suite, and landscaped residents' rooftop garden.
		Gasholders is perfectly located with easy access to Coal Drops Yard and Granary Square with their array of boutiques, bars, and restaurants.
		Nearby transport links include St. Pancras International and King's Cross Station (Northern, Victoria, Hammersmith & City, Metropolitan, Circle and Piccadilly lines, National Rail) providing frequent services into the City and the West End.

FEATURES

One Bedrooms
One Reception Room
One Bathroom
Concierge/porter
First Floor
Lift
Roof Terrace
Balcony

LOCATION

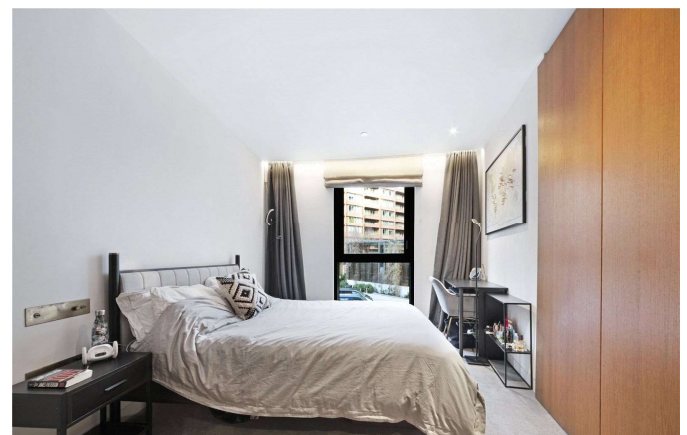
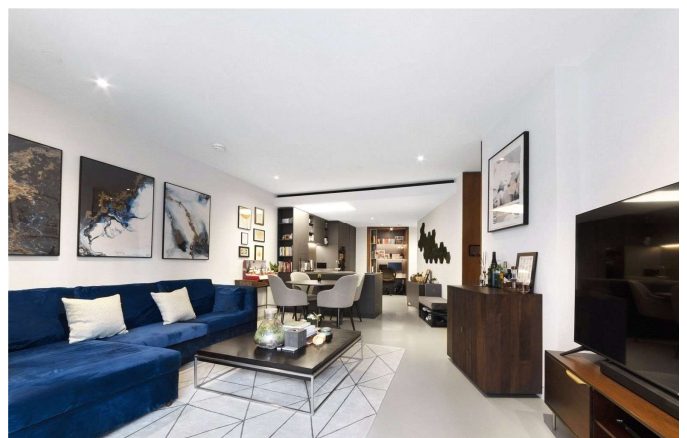


MARYLEBONE LETTINGS

20A Paddington Street, W1U 5QP

020 7486 6338

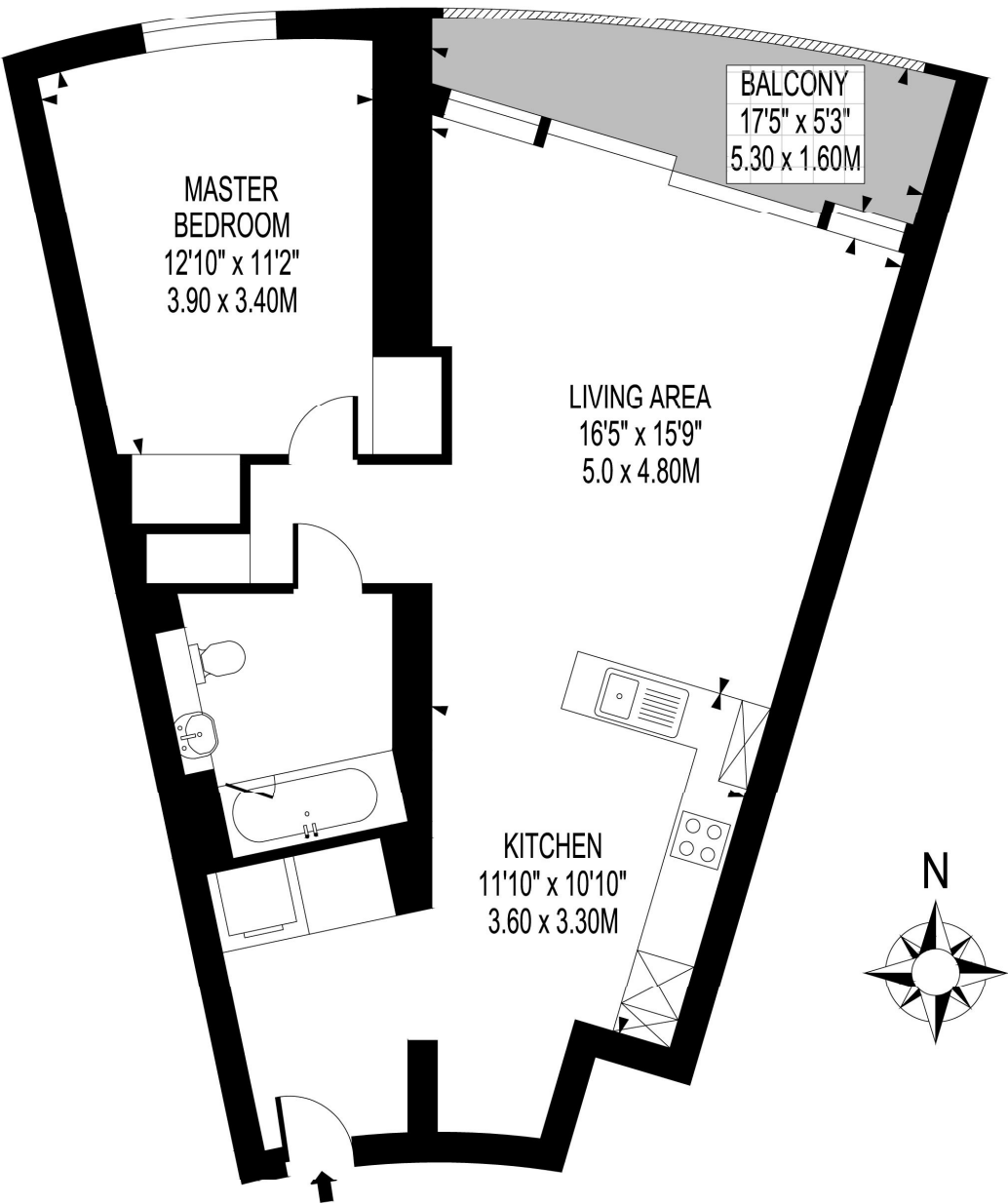
lettings.marylebone@bhhs-london.com



FLOORPLAN

GASHOLDERS

APPROXIMATE GROSS INTERNAL FLOOR AREA : 689 SQ FT- 64.0 SQ M



FIRST FLOOR

FOR ILLUSTRATION PURPOSES ONLY

THIS FLOOR PLAN SHOULD BE USED AS A GENERAL OUTLINE FOR GUIDANCE ONLY AND DOES NOT CONSTITUTE IN WHOLE OR IN PART AN OFFER OR CONTRACT. ANY INTENDING PURCHASER OR LESSEE SHOULD SATISFY THEMSELVES BY INSPECTION, SEARCHES, ENQUIRIES AND FULL SURVEY AS TO THE CORRECTNESS OF EACH STATEMENT. ANY AREAS, MEASUREMENTS OR DISTANCES QUOTED ARE APPROXIMATE AND SHOULD NOT BE USED TO VALUE A PROPERTY OR BE THE BASIS OF ANY SALE OR LET.