



Classic Charm Meets Contemporary Luxury on Queen's Gate

QUEENS GATE

SOUTH KENSINGTON, SW7

Asking Price
£1,495,000

**BERKSHIRE
HATHAWAY**
HOMESERVICES

LONDON

PROPERTY DETAILS

Guide Price £1,495,000	Square Footage 910
Council Tax Band G	EPC D
Ground Rent £200	Service Charge £9768
Tenure Share of Freehold	

Set on the raised ground floor, this beautifully refurbished two-bedroom, two-bathroom apartment boasts soaring 3.4-metre ceilings and a bright, east-facing reception room. Covering 910 sq. ft., the home has been finished to an exceptional standard throughout.

Situated on the prestigious Queen’s Gate—a picturesque, tree-lined street in the heart of South Kensington—this residence is perfectly positioned between Hyde Park and Old Brompton Road. Both South Kensington and Gloucester Road stations are within easy walking distance. Residents can enjoy close proximity to boutique shopping, quaint cafés, renowned restaurants, and iconic cultural attractions including world-class museums, the Royal Albert Hall, Kensington Gardens, and Hyde Park.

FEATURES

- Two Bedrooms
- One Reception Room
- Two Bathrooms
- High Ceilings
- Ground Floor
- Wood Flooring
- Patio

LOCATION

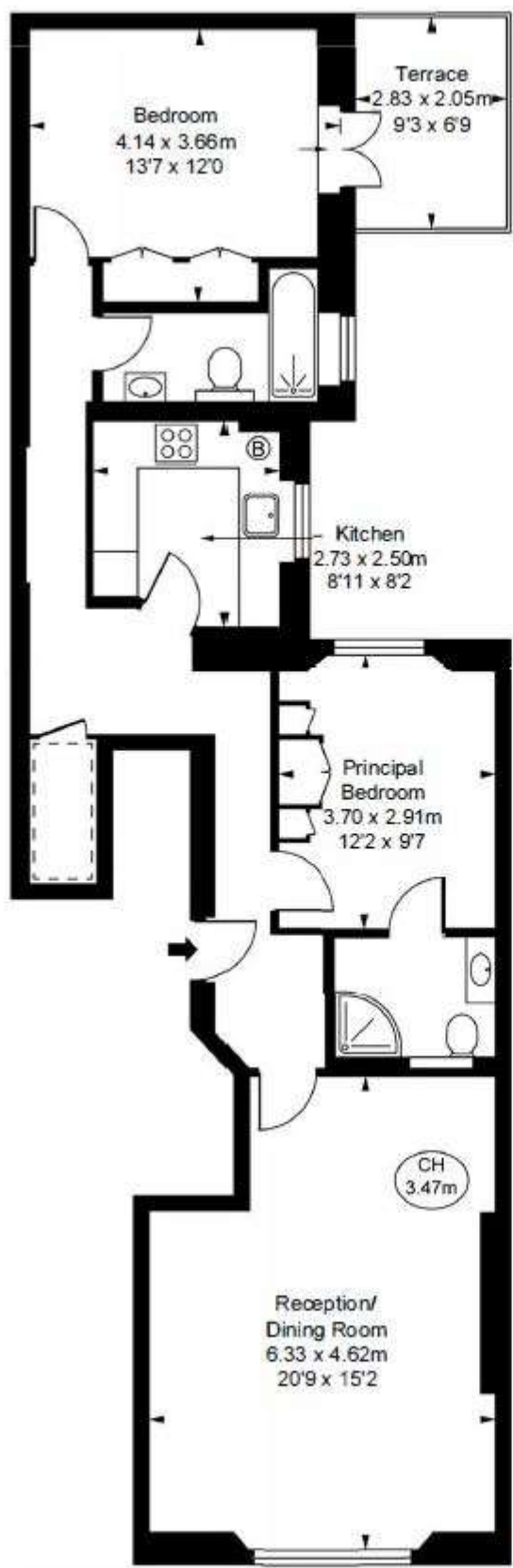


KNIGHTSBRIDGE SALES
55-57 SLOANE AVENUE, SW3 3DH

020 7235 9641
sales.knightsbridge@bhhs-london.com



FLOORPLAN



Queen's Gate, SW7
Approximate Gross Internal Area
82.78 sq m / 891sq ft
(Including restricted height
under 1.5m [- - - -])
(CH = Ceiling Heights)



Raised Ground Floor