



A Wonderfully Light and Spacious Three Bedroom Split-Level Apartment Located on the First Floor of a Beautiful Georgian Terrace

# ORSETT TERRACE

HYDE PARK, W2

Asking Price  
£1,200,000

**BERKSHIRE  
HATHAWAY**  
HOMESERVICES

LONDON

# PROPERTY DETAILS

<b>Guide Price</b> £1,200,000	<b>Square Footage</b> 868
<b>Council Tax Band</b> F	<b>EPC</b> C
<b>Tenure</b> Share of Freehold 974 years remaining	<b>Service Charge</b> £7,600 pa

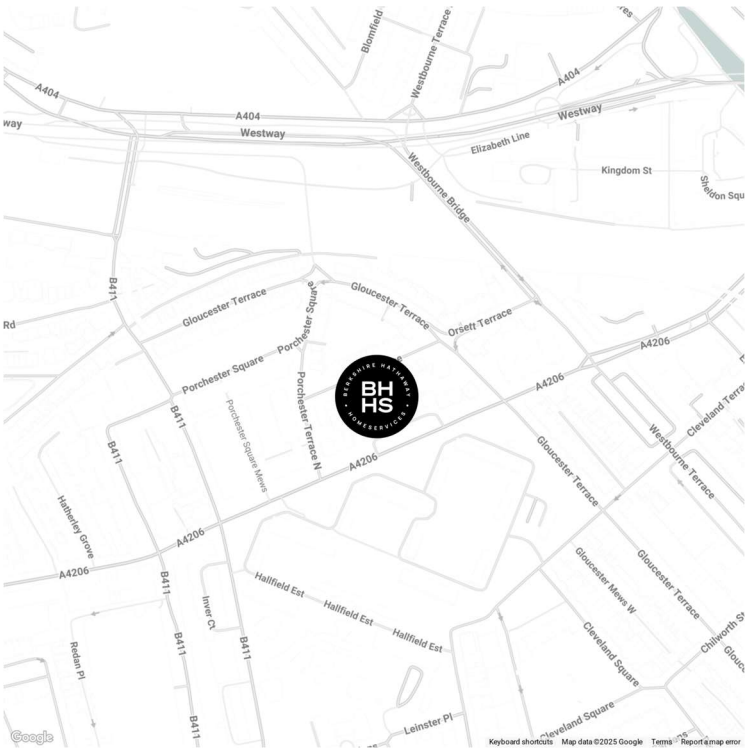
This stylish flat is presented in immaculate condition throughout, featuring a mix of modern elegance and timeless charm. Upon entering the apartment, you are met with a great feeling of space and light. The ground floor comprises a generous size reception room and a modern kitchen. Upstairs are three bedrooms, one currently used as a home office, and the bathroom. There is also a balcony off the front two bedrooms with views over the tree lined street. The property also benefits from ample storage throughout.

Situated within easy access of the amenities of Bayswater and excellent transport links including Marble Arch Underground Station (Central Line), Paddington Underground Station (Bakerloo, Circle and District & Circle and Hammersmith Lines), Paddington Rail Station (Heathrow Express).

## FEATURES

- Three Bedrooms
- One Reception Room
- One Bathroom
- Residents Parking
- Balcony
- Period

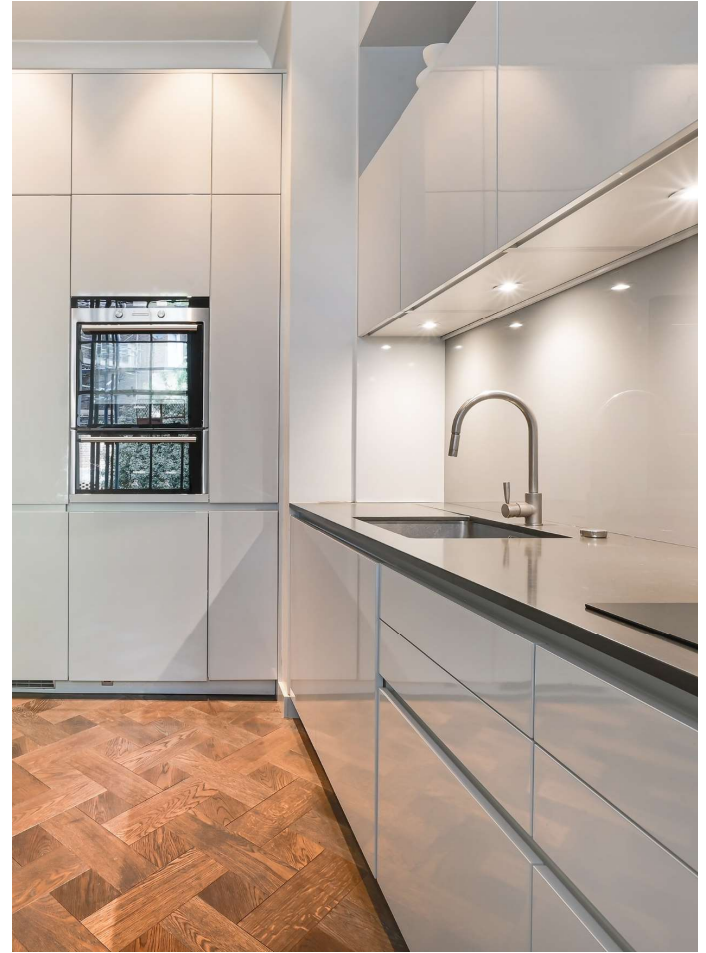
## LOCATION



**HYDE PARK SALES**  
24-25 Albion Street, W2 2AX

020 7262 2030  
sales.hydepark@bhhs-london.com



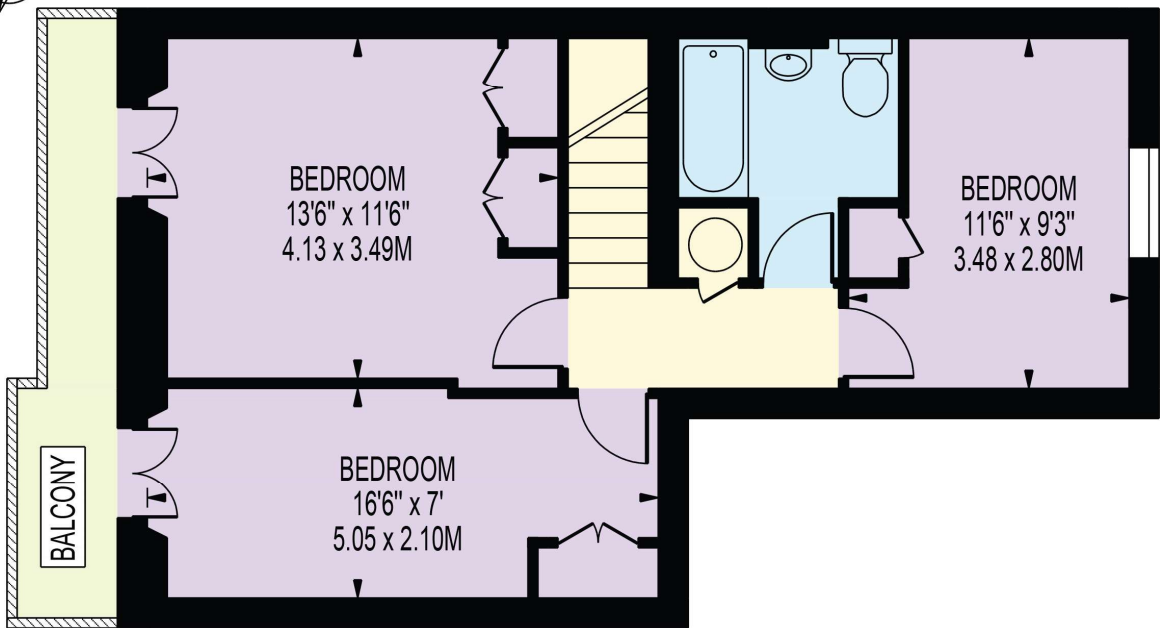




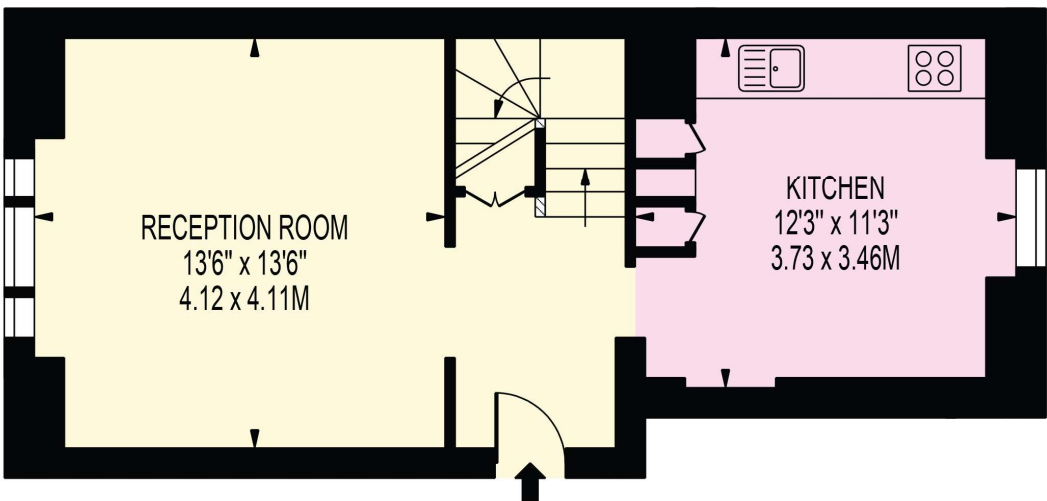
# FLOORPLAN

## ORSETT TERRACE

APPROXIMATE GROSS INTERNAL FLOOR AREA: 868 SQ FT - 80.61 SQ M



FIRST FLOOR



GROUND FLOOR

FOR ILLUSTRATION PURPOSES ONLY

THIS FLOOR PLAN SHOULD BE USED AS A GENERAL OUTLINE FOR GUIDANCE ONLY AND DOES NOT CONSTITUTE IN WHOLE OR IN PART AN OFFER OR CONTRACT. ANY INTENDING PURCHASER OR LESSEE SHOULD SATISFY THEMSELVES BY INSPECTION, SEARCHES, ENQUIRIES AND FULL SURVEY AS TO THE CORRECTNESS OF EACH STATEMENT. ANY AREAS, MEASUREMENTS OR DISTANCES QUOTED ARE APPROXIMATE AND SHOULD NOT BE USED TO VALUE A PROPERTY OR BE THE BASIS OF ANY SALE OR LET.