



Well-appointed One Bedroom Ground Floor Flat

# GUNTER GROVE

CHELSEA, SW10

Asking Price  
£575,000

**BERKSHIRE  
HATHAWAY**  
HOMESERVICES

LONDON

# PROPERTY DETAILS

<b>Guide Price</b> £575,000	<b>Square Footage</b> 431
<b>Council Tax Band</b> D	<b>EPC</b> C
<b>Ground Rent</b> £1,500 pa	<b>Tenure</b> Leasehold

This beautifully updated one-bedroom ground floor apartment has been significantly enhanced by the current owner and is ideally situated close to local amenities.

The stylishly presented accommodation briefly includes:

A communal entrance hall, an impressive open-plan living room and kitchen with integrated appliances and a dining area. At the rear of the apartment is a spacious double bedroom, along with a modern family shower room.

Gunter Grove enjoys a prime location between Fulham Road and King's Road, offering easy access to a wide range of Chelsea's local amenities, including boutique shops, trendy bars, and popular restaurants. Sloane Square is located around 1.5 miles away.

Nearby schools include Tadpoles Nursery School, Park Walk Primary School, and Chelsea Academy.

# FEATURES

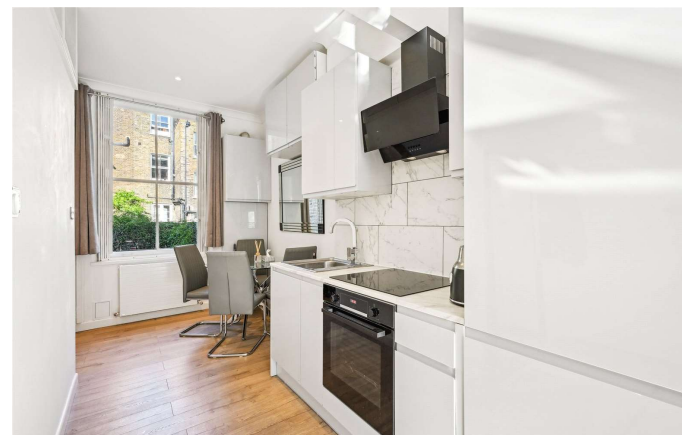
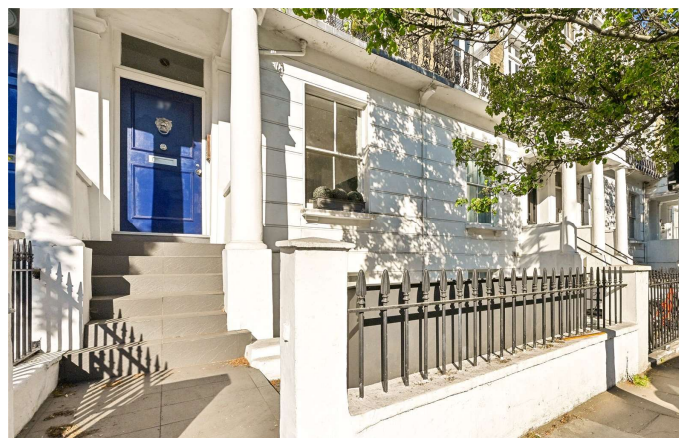
- One Bedroom
- One Reception Room
- One Bathroom
- Off Street Parking
- Ground Floor
- Prime Location
- Wood Flooring

# LOCATION



**KNIGHTSBRIDGE SALES**  
55-57 SLOANE AVENUE, SW3 3DH

020 7235 9641  
sales.knightsbridge@bhhs-london.com



# FLOORPLAN

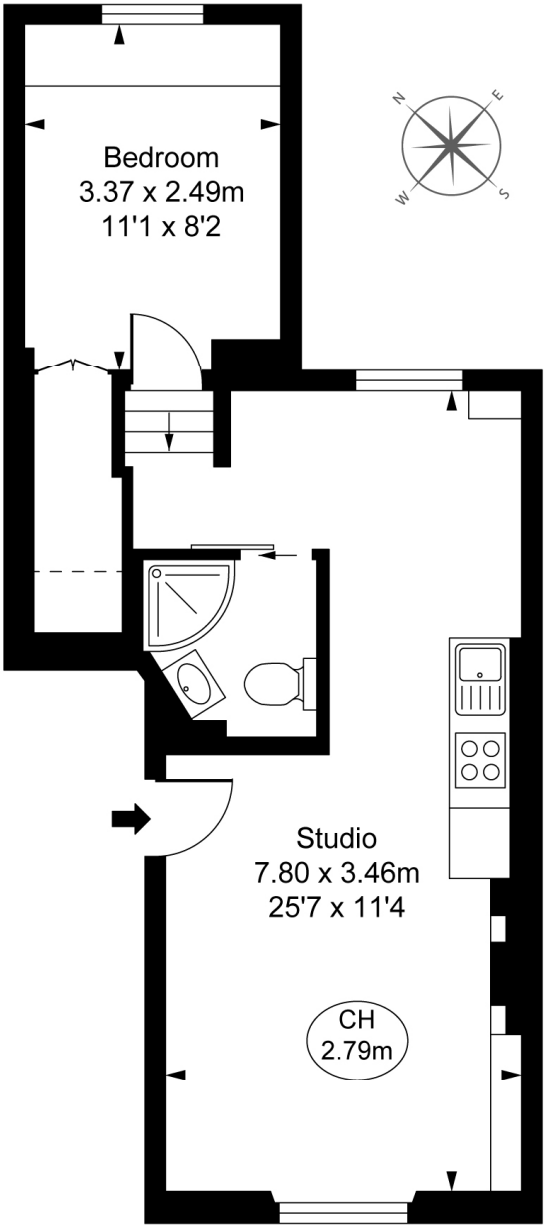
## Gunter Grove, SW10

Approximate Gross Internal Area

38.92 sq m / 419 sq ft

( Including restricted height  
under 1.5m [-----] )

( CH = Ceiling Heights )



Raised Ground Floor

**FULHAM**  
**PERFORMANCE**  
PRECISION YOU CAN TRUST

This plan is not to a given scale. A detailed layout plan with dimensions is available on request.  
All quoted measurements and areas are within 1% tolerance and have been prepared in accordance with industry standards as defined in the RICS Code of Measuring Practice  
© Fulham Performance