



A Duplex Apartment in a Charming Townhouse  
in Marylebone

# FLAT 1

91 YORK STREET, W1H

£1,050 per week

**BERKSHIRE  
HATHAWAY**  
HOMESERVICES

LONDON

## PROPERTY DETAILS

<b>Guide Price</b>	<b>Square Footage</b>
£1,050 per week	1285

<b>Council Tax Band</b>	<b>EPC Rating</b>
G	D

Arranged over two floors in a charming townhouse in the heart of Marylebone, this well laid out three-bedroom apartment offers 1285sqft of living space and a lovely private patio. Upon entering a dine-in kitchen is found, along with a large reception room. The master bedroom and second double bedroom both feature en-suite shower rooms, with a third bedroom with separate bathroom.

York Street offers many shops, cafes and restaurants on the doorstep, as well as convenient access to the West End.

## FEATURES

### Three Bedrooms

One Reception Room

### Three Bathrooms

Terraced

Basement

### Ground Floor

Duplex

## LOCATION



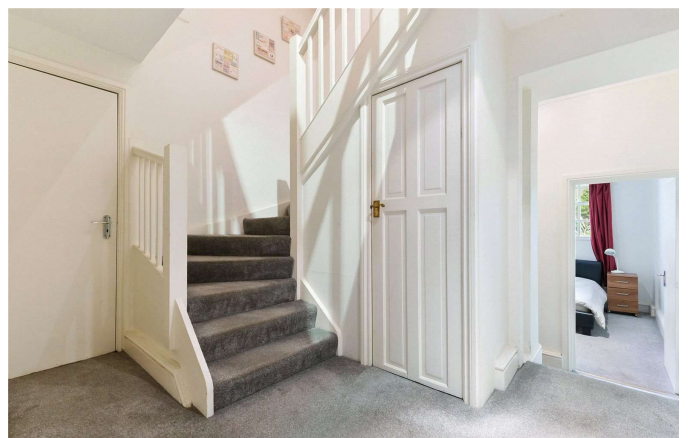
**MARYLEBONE LETTINGS**

20A Paddington Street, W1U 5QP

020 7486 6338

lettings.marylebone@bhhs-london.com



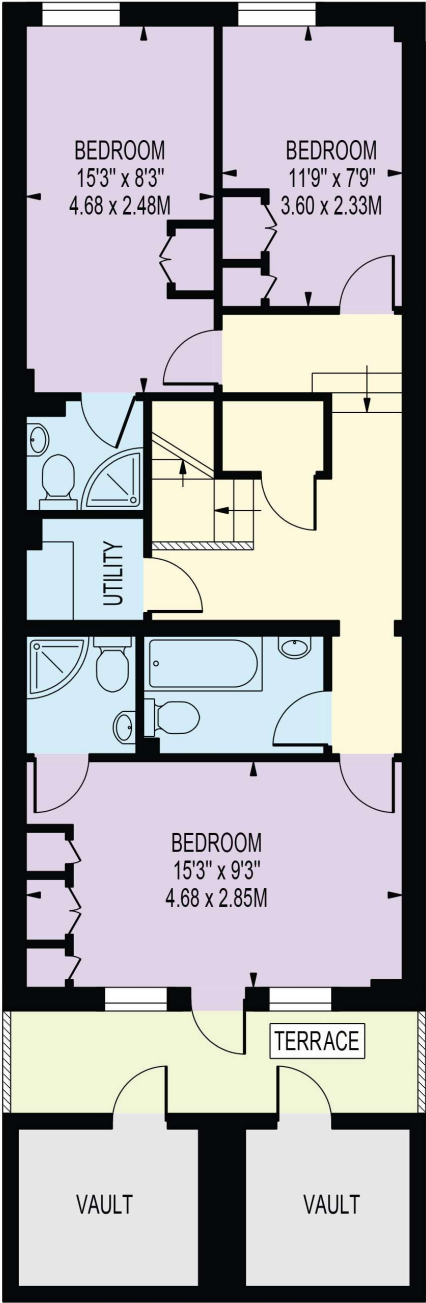


# FLOORPLAN

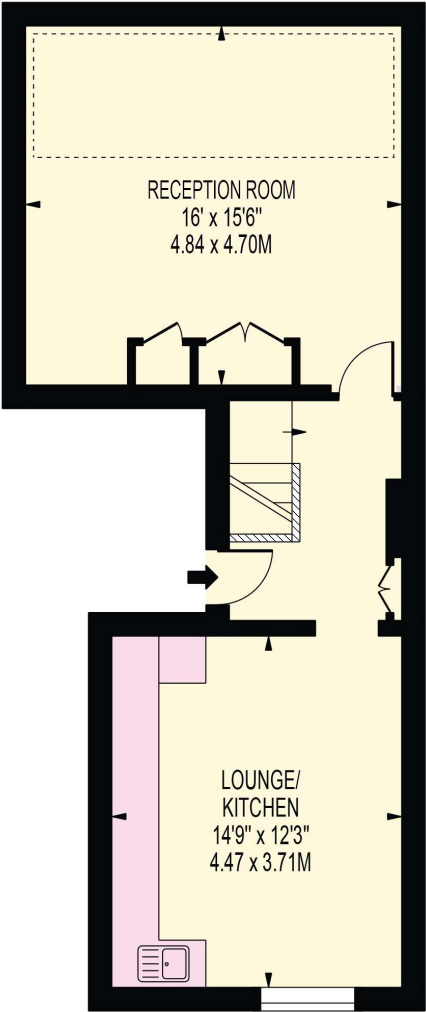
## YORK STREET

APPROXIMATE TOTAL INTERNAL FLOOR AREA: 1285 SQ FT - 119.38 SQ M  
(INCLUDING VAULTS)

APPROXIMATE GROSS INTERNAL FLOOR AREA OF VAULTS: 95 SQ FT - 8.80 SQ M



LOWER GROUND FLOOR



GROUND FLOOR

FOR ILLUSTRATION PURPOSES ONLY

THIS FLOOR PLAN SHOULD BE USED AS A GENERAL OUTLINE FOR GUIDANCE ONLY AND DOES NOT CONSTITUTE IN WHOLE OR IN PART AN OFFER OR CONTRACT.  
ANY INTENDING PURCHASER OR LESSEE SHOULD SATISFY THEMSELVES BY INSPECTION, SEARCHES, ENQUIRIES AND FULL SURVEY AS TO THE CORRECTNESS OF EACH STATEMENT.  
ANY AREAS, MEASUREMENTS OR DISTANCES QUOTED ARE APPROXIMATE AND SHOULD NOT BE USED TO VALUE A PROPERTY OR BE THE BASIS OF ANY SALE OR LET.