



Unique Home with Elegant Period Features

CHURCH STREET

MARYLEBONE, NW8

£1,250 per week

**BERKSHIRE
HATHAWAY**
HOMESERVICES

LONDON

PROPERTY DETAILS

Guide Price £1,250 per week	Square Footage 1600
Council Tax Band C	EPC Rating C

We are delighted to present this truly unique and character-filled property, set in the heart of Church Street. This exceptional home is spread over four floors and boasts an array of stunning period features, seamlessly blending traditional charm with modern conveniences. Impeccably maintained and in fantastic condition, this rare gem offers an unparalleled living experience.

Step inside to discover a home full of distinctive details, from the beautiful wooden flooring throughout to the original shutters in the library-style living room. The spacious living area is flooded with natural light from two large sash windows and features a charming traditional fireplace, along with ample built-in bookshelves. The separate, cosy kitchen is well-equipped with white goods and benefits from a window with direct access to an outdoor planter space, perfect for homegrown herbs. The dining room includes integrated storage and a built-in TV.

Situated in a prime London location, this property benefits from excellent amenities and transport links. Church Street is known for its vibrant atmosphere, featuring independent boutiques and charming cafés. Just a short distance from Marylebone, residents can enjoy easy access to some of the city's best cultural landmarks, parks, and shopping districts. The area is well-served by transport connections, including Marylebone, Baker Street and Edgware Road stations, offering seamless travel across London. With its rich history, thriving local scene, and exceptional convenience, this location is perfect for those seeking a blend of character and connectivity.

FEATURES

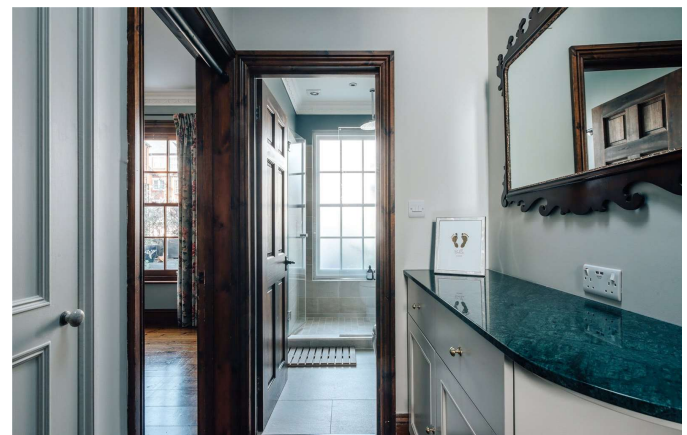
- Three Bedrooms
- Two Reception Rooms
- Three Bathrooms
- Period

LOCATION



MARYLEBONE LETTINGS
20A Paddington Street, W1U 5QP

020 7486 6338
lettings.marylebone@bhhs-london.com

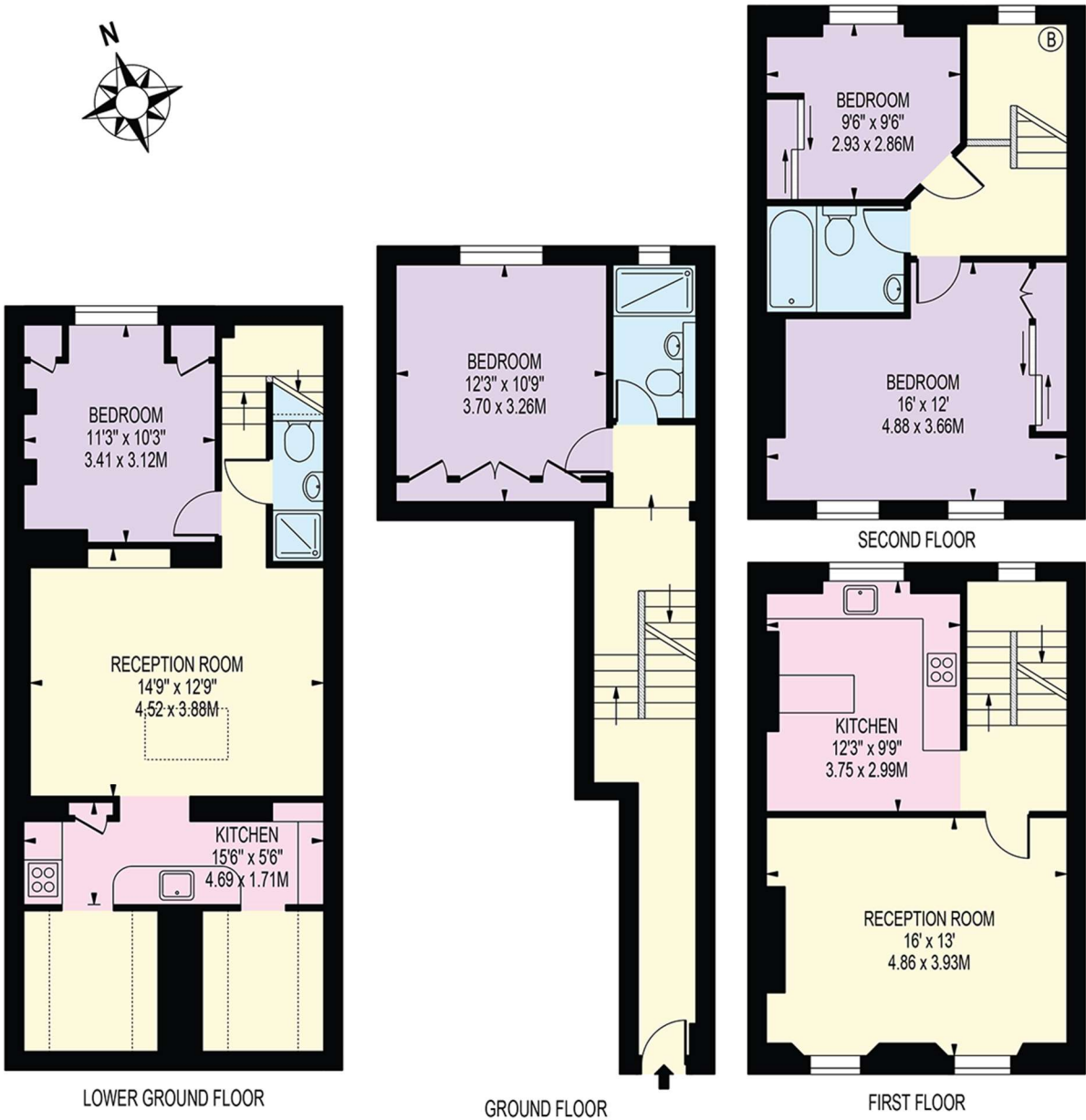


FLOORPLAN

CHURCH STREET

APPROXIMATE TOTAL INTERNAL FLOOR AREA: 1652 SQ FT - 153.51 SQ M
(INCLUDING RESTRICTED HEIGHT AREA)

APPROXIMATE GROSS INTERNAL FLOOR AREA OF RESTRICTED HEIGHT: 54 SQ FT - 5.06 SQ M



FOR ILLUSTRATION PURPOSES ONLY

THIS FLOOR PLAN SHOULD BE USED AS A GENERAL OUTLINE FOR GUIDANCE ONLY AND DOES NOT CONSTITUTE IN WHOLE OR IN PART AN OFFER OR CONTRACT.
ANY INTENDING PURCHASER OR LESSEE SHOULD SATISFY THEMSELVES BY INSPECTION, SEARCHES, ENQUIRIES AND FULL SURVEY AS TO THE CORRECTNESS OF EACH STATEMENT.
ANY AREAS, MEASUREMENTS OR DISTANCES QUOTED ARE APPROXIMATE AND SHOULD NOT BE USED TO VALUE A PROPERTY OR BE THE BASIS OF ANY SALE OR LET.