



Beautifully Finished Four Bedroom Apartment
with Concierge in the Heart of Notting Hill

CHEPSTOW PLACE

NOTTING HILL, W2

£1,500 per week

**BERKSHIRE
HATHAWAY**
HOMESERVICES

LONDON

PROPERTY DETAILS

Guide Price £1,500 per week	Square Footage 1,851
Council Tax Band H	EPC Rating C

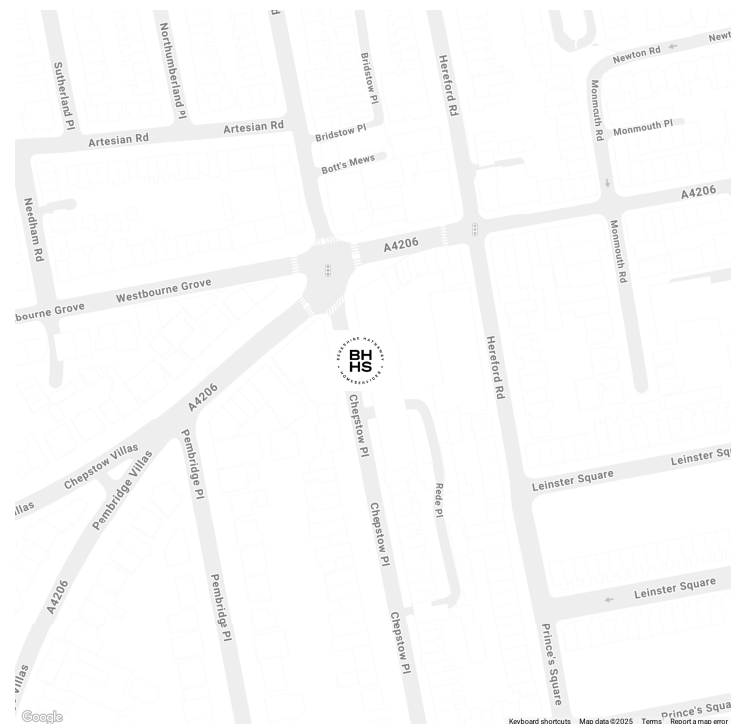
An exceptional four-bedroom, four-bathroom apartment set on the first floor of The Baynards, a prestigious and sought-after development located just off Westbourne Grove in the heart of Notting Hill. Offering generous proportions throughout, the apartment features high ceilings, stylish interiors, and a spacious open-plan living and dining area ideal for modern living and entertaining. Each bedroom is well-sized, with two benefitting from en-suite bathrooms, and the finish throughout is of a high standard.

Residents enjoy a 24-hour concierge service, lift access, a private gym, and beautifully maintained communal gardens. The Baynards is perfectly positioned moments from the boutiques, cafés, and restaurants of Westbourne Grove and Portobello Road, with the green open spaces of Hyde Park and Kensington Gardens nearby. Excellent transport links are available via Notting Hill Gate (Central, Circle & District lines), Bayswater, and Westbourne Park stations, making this an ideal base for both local lifestyle and city commuting.

FEATURES

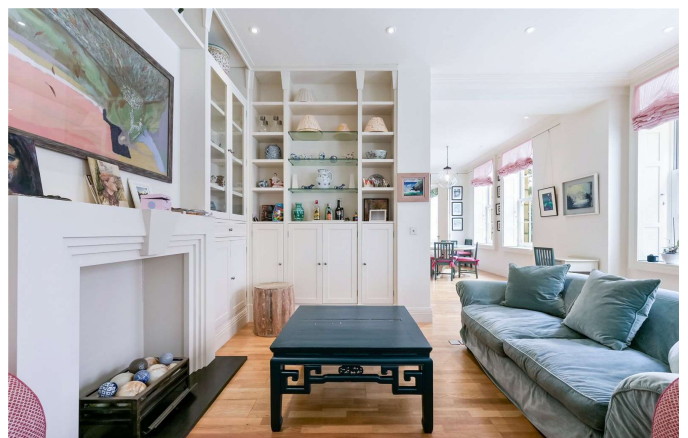
- Four Bedrooms
- One Reception Rooms
- Four Bathrooms
- Concierge/ Porter
- Parking
- Lift
- Furnished
- Pantry, Utility Rooms

LOCATION



HYDE PARK LETTINGS
24-25 Albion Street, W2 2AX

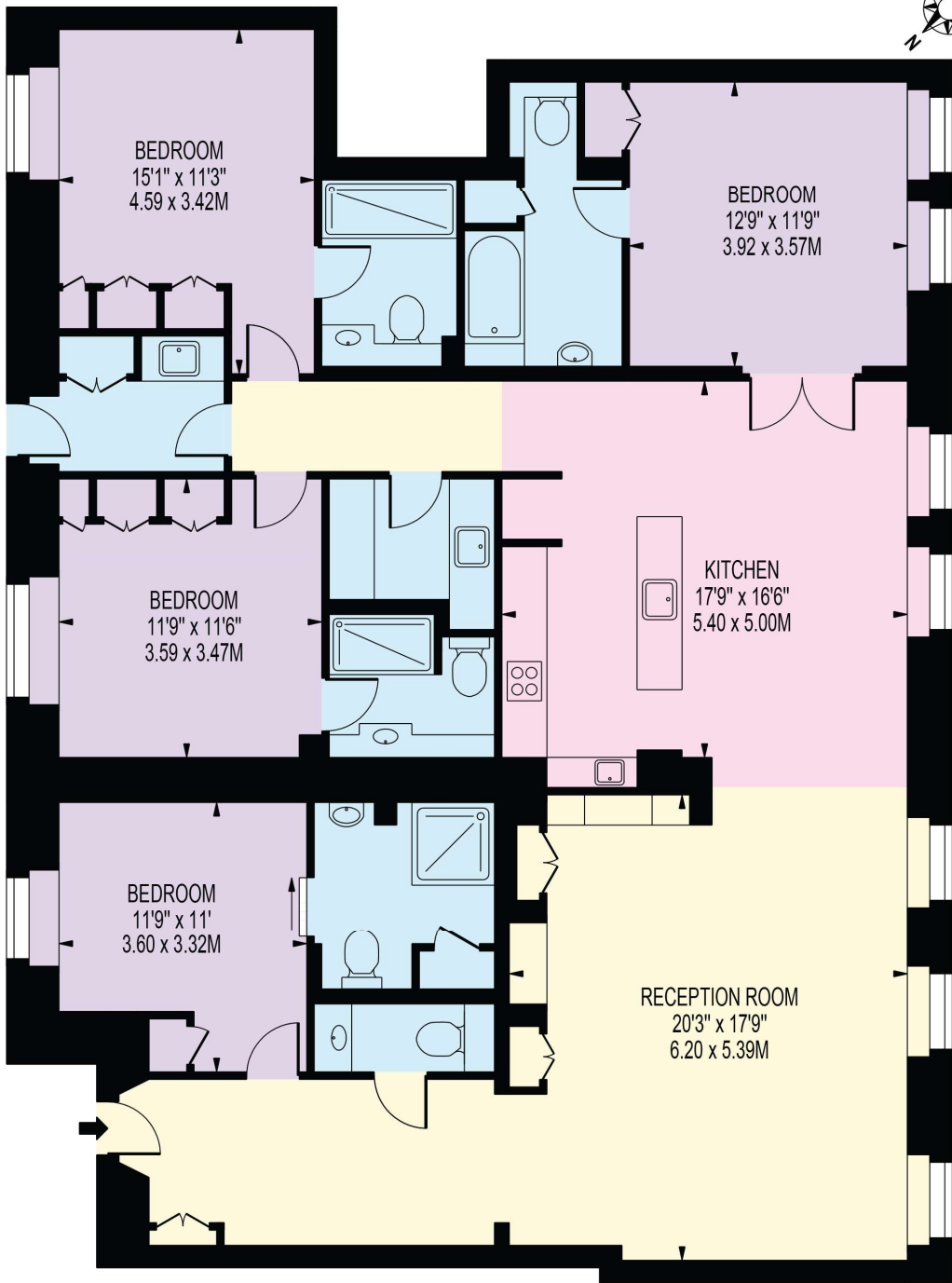
020 7262 2030
lettings.hydepark@bhhs-london.com



FLOORPLAN

CHEPSTOW PLACE

APPROXIMATE GROSS INTERNAL FLOOR AREA: 1851 SQ FT - 171.99 SQ M



FIRST FLOOR
FOR ILLUSTRATION PURPOSES ONLY

THIS FLOOR PLAN SHOULD BE USED AS A GENERAL OUTLINE FOR GUIDANCE ONLY AND DOES NOT CONSTITUTE IN WHOLE OR IN PART AN OFFER OR CONTRACT. ANY INTENDING PURCHASER OR LESSEE SHOULD SATISFY THEMSELVES BY INSPECTION, SEARCHES, ENQUIRIES AND FULL SURVEY AS TO THE CORRECTNESS OF EACH STATEMENT. ANY AREAS, MEASUREMENTS OR DISTANCES QUOTED ARE APPROXIMATE AND SHOULD NOT BE USED TO VALUE A PROPERTY OR BE THE BASIS OF ANY SALE OR LET.