



TOP-FLOOR MAISONETTE IN PRIME CHELSEA LOCATION

# DRAYCOTT PLACE

SW3

Asking Price  
£2,500,000

**BERKSHIRE  
HATHAWAY**  
HOMESERVICES

LONDON

# PROPERTY DETAILS

<b>Guide Price</b> £2,500,000	<b>Square Footage</b> 1729
<b>Council Tax Band</b> TBC	<b>EPC</b> C
<b>Ground Rent</b> £200	<b>Service Charge</b> £2000
<b>Tenure</b> Share of Freehold	

This beautifully refurbished three-bedroom, three-bathroom maisonette occupies the top two floors of a classic red-brick period building, offering a bright, spacious living space. The apartment has been carefully renovated to blend modern finishes with period features, creating a stylish and comfortable home.

The property is flooded with natural light and offers a flexible layout, including a generous reception room perfect for both relaxation and entertaining. Each of the three bedrooms is well-sized, and the bathrooms are finished to a high standard. There's also plenty of built-in storage throughout.

Situated in the heart of Chelsea, Draycott Place is just moments from Cadogan Gardens and Sloane Avenue, with easy access to the shops, restaurants, and cafes of Kings Road and Sloane Street. Nearby underground stations provide excellent transport links, across London.

# FEATURES

Three Bedrooms
One Reception Room
Three Bathrooms
24 Hour Security
Maisonette
Wood Flooring
Built-In-Storage Throughout

# LOCATION



**KNIGHTSBRIDGE SALES**  
55-57 SLOANE AVENUE, SW3 3DH  
  
020 7235 9641  
sales.knightsbridge@bhhs-london.com

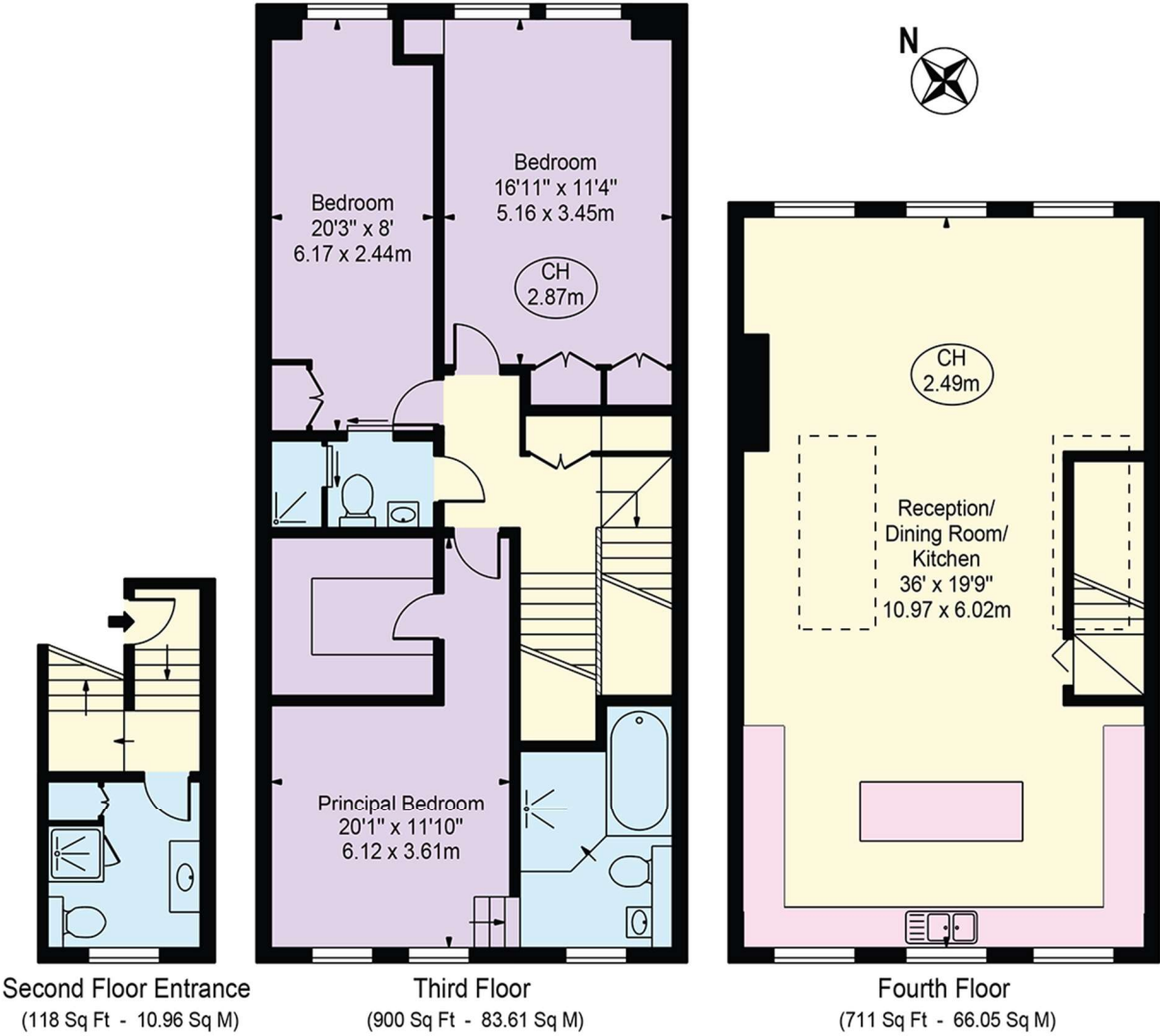




# FLOORPLAN

## Draycott Place

Approx. Gross Internal Area 1729 Sq Ft - 160.62 Sq M



For Illustration Purposes Only - Not To Scale

This floor plan should be used as a general outline for guidance only and does not constitute in whole or in part an offer or contract. Any intending purchaser or lessee should satisfy themselves by inspection, searches, enquiries and full survey as to the correctness of each statement. Any areas, measurements or distances quoted are approximate and should not be used to value a property or be the basis of any sale or let.

Copyright Morriarti Photography & Design LTD