



A Refurbished One-Bedroom Apartment Located in One of
London's Most Sought-After Areas

PHILBEACH GARDENS

SW5

£525 per week

**BERKSHIRE
HATHAWAY**
HOMESERVICES

LONDON

PROPERTY DETAILS

Guide Price £525 per week	Square Footage 0	<p>This beautifully refurbished one-bedroom apartment, ideal for double occupation, is located on the ground floor of a secure development with an on-site porter. The bright and airy living room is finished to a high standard, creating a welcoming space for both relaxation and entertaining. The apartment also includes a well-equipped kitchen, a spacious bedroom, and a sleek bathroom.</p> <p>Recently updated to the highest standards, the apartment features modern design throughout, with quality flooring and a fresh, contemporary feel. It offers both comfort and practicality, with all bills included in the rent for an additional £200 per month.</p>
Council Tax Band	EPC Rating To be confirmed	

Located on Philbeach Gardens, the apartment is tucked away in a quiet corner of Earl's Court, offering a tranquil residential environment while being within walking distance of the hustle and bustle of the Earl's Court district. Within a 5-minute walk, you'll find an abundance of local eateries, coffee houses, bars, and restaurants. Earl's Court station provides multiple transport links to the city and West End, as well as direct Piccadilly line access to Heathrow Airport.

FEATURES

- One Bedroom
- One Reception Room
- One Bathroom
- Concierge/ Porter
- Lift
- Furnished
- Wood Flooring

LOCATION

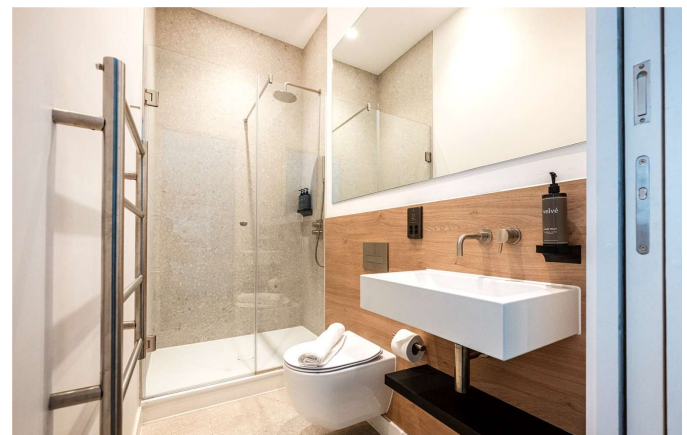
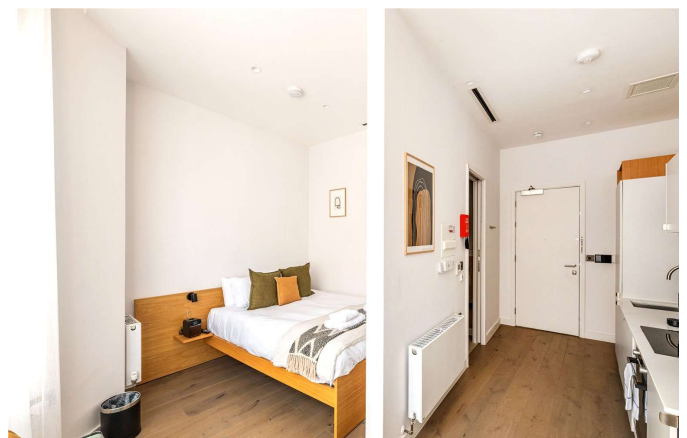
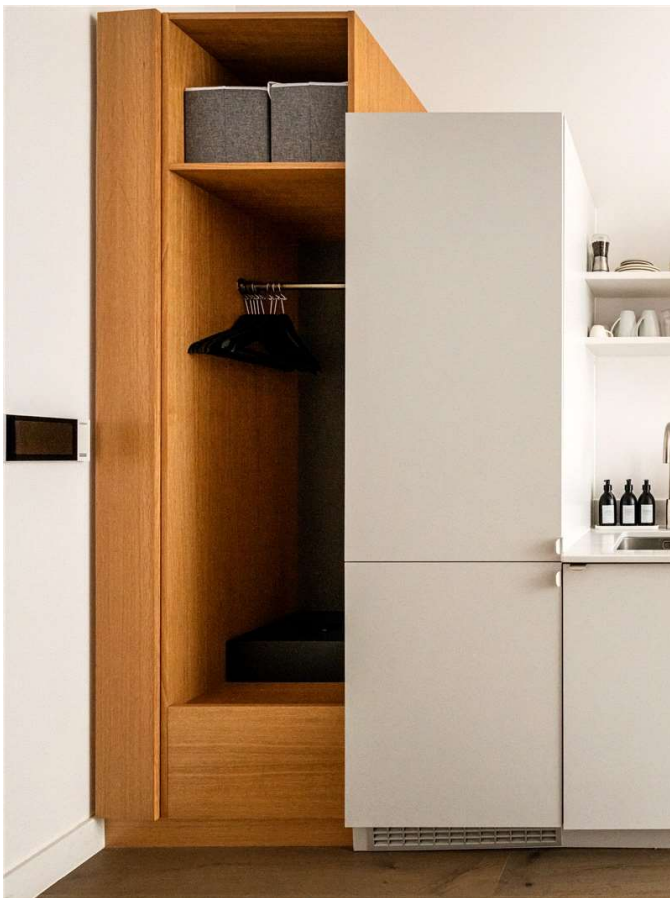


KNIGHTSBRIDGE LETTINGS

55-57 SLOANE AVENUE, SW3 3DH

020 7235 9641

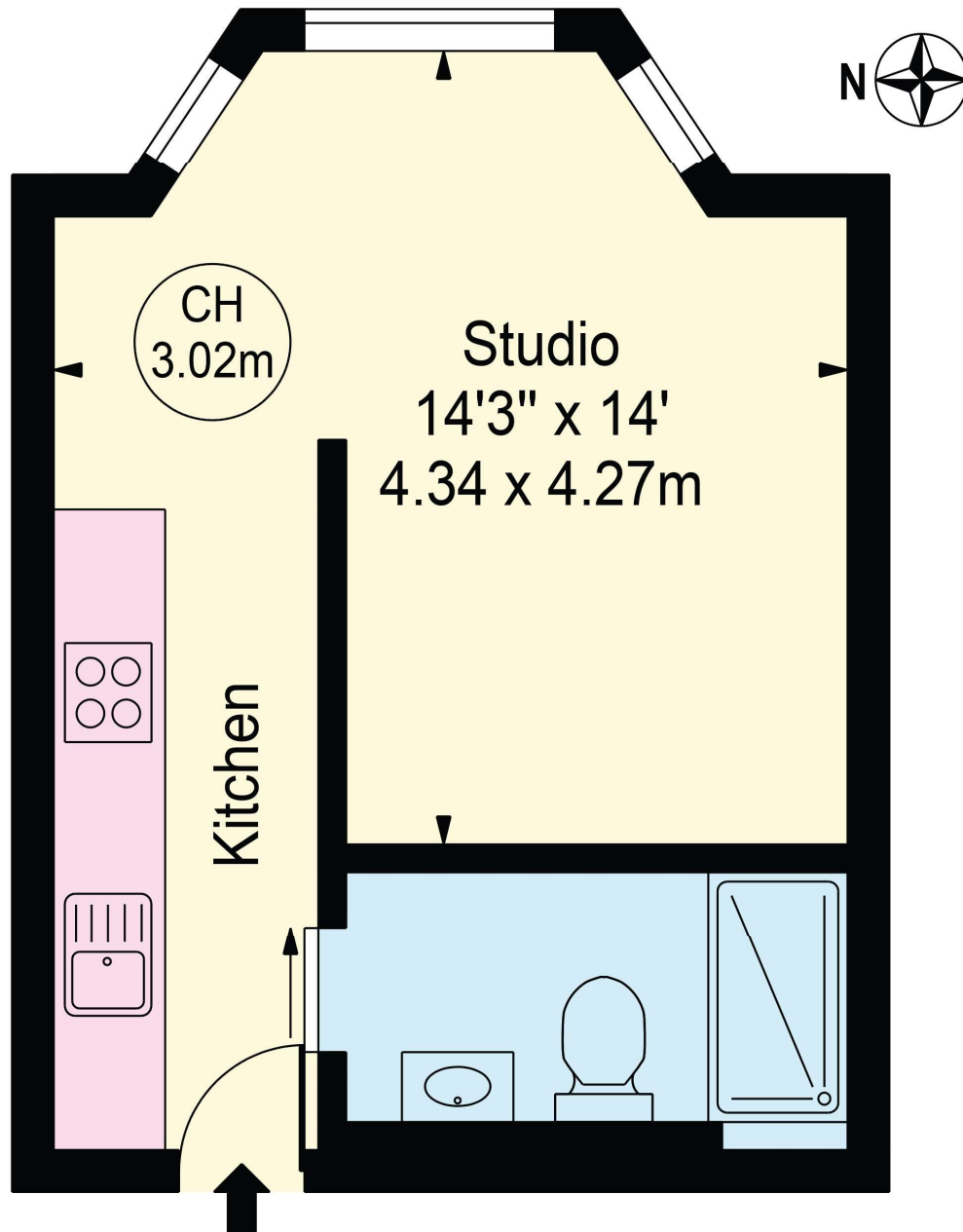
lettings.knightsbridge@bhhs-london.com



FLOORPLAN

Philbeach Gardens

Approx. Gross Internal Area 259 Sq Ft - 24.06 Sq M



Raised Ground Floor

For Illustration Purposes Only - Not To Scale

This floor plan should be used as a general outline for guidance only and does not constitute in whole or in part an offer or contract.
Any intending purchaser or lessee should satisfy themselves by inspection, searches, enquiries and full survey as to the correctness of each statement.
Any areas, measurements or distances quoted are approximate and should not be used to value a property or be the basis of any sale or let.

Copyright Morriarti Photography & Design LTD