



LUXURY TWO BEDROOM WITH BREATHTAKING VIEWS

HARBOUR WAY

E14

Asking Price
£800,000

**BERKSHIRE
HATHAWAY**
HOMESERVICES

LONDON

PROPERTY DETAILS

Guide Price	Square Footage
£800,000	734

Council Tax Band	EPC
F	B

Tenure	Service Charge
Leasehold	£6300

A stunning two bedroom apartment with balcony arranged along the 25th floor of Maine Tower, part of the Harbour Central development, a 2.6 acre cosmopolitan village with bars, restaurants and green squares near the heart of Canary Wharf.

Along with views of the Thames, City, and Greenwich, residents also benefit from 24 hour Concierge, Residents Lounge, Cinema, and Gym.

FEATURES

Two Bedrooms

One Reception Room

Two Bathrooms

Concierge/ Porter

24 Hour Security

Lift

Balcony

LOCATION

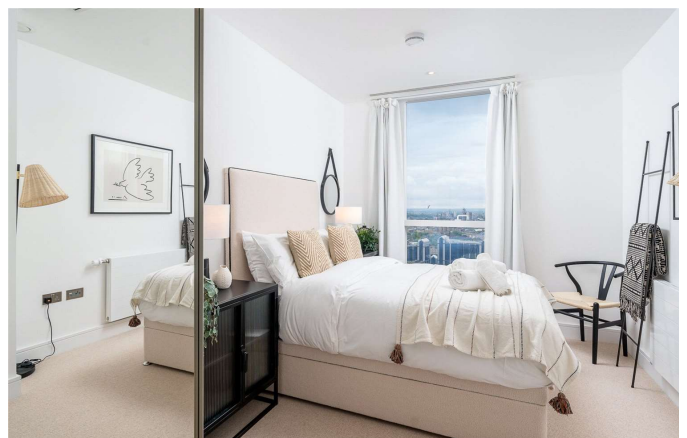


KINGS CROSS SALES

Unit 4,6 Pancras Square, N1C 4AG

020 7467 2020

sales.kingscross@bhhs-london.com



FLOORPLAN

