



ELEGANT FIRST FLOOR APARTMENT IN KENSINGTON

# PRINCE OF WALES TERRACE

KENSINGTON, W8

£3,900 per week

**BERKSHIRE  
HATHAWAY**  
HOMESERVICES

LONDON

# PROPERTY DETAILS

<b>Guide Price</b> £3,900 per week	<b>Square Footage</b> 1266
<b>Council Tax Band</b> TBC	<b>EPC Rating</b> C

A beautiful interior designed apartment situated on the first floor (with lift) of this classic white Stucco fronted Kensington residence.

The apartment is fitted to the high specification and benefits air conditioning throughout.

Each of the double bedrooms have ensuite marble bathrooms and fitted wardrobes.

The reception room has sliding doors leading to a private terrace.

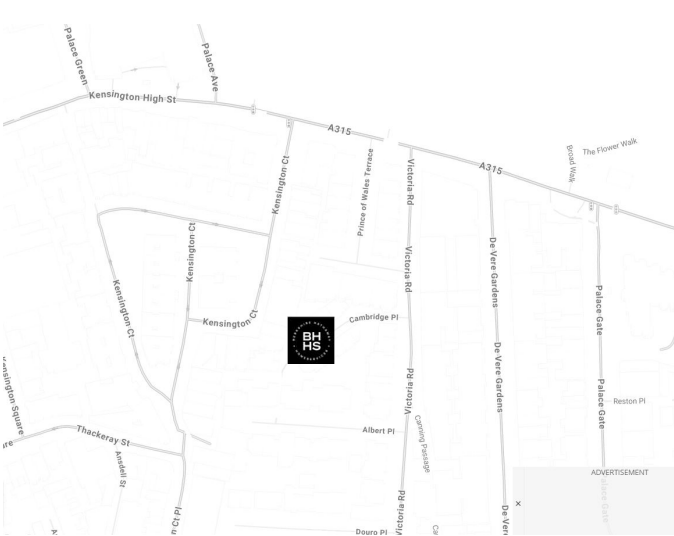
Prince of Wales Terrace is situated within a few minutes' walk of the open spaces of Hyde Park and Kensington Gardens and a short stroll from Kensington High Street underground station and the area's finest shops and restaurants.

The A4 provides easy access to Heathrow Airport and the west of London.

## FEATURES

- Two Bedrooms
- One Reception Room
- Two Bathrooms
- Residents Parking
- First Floor
- Lift
- Roof Terrace
- Pet Friendly

## LOCATION

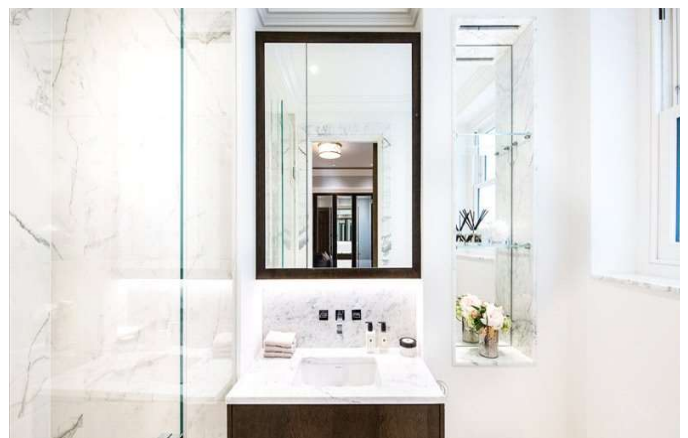


### KNIGHTSBRIDGE LETTINGS

55-57 SLOANE AVENUE, SW3 3DH

020 7235 9641

lettings.knightsbridge@bhhs-london.com



# FLOORPLAN

