



A Stunning Hyde Park Apartment in a Historic Conversion

FREDERICK CLOSE

HYDE PARK ESTATE, W2

£2,750 per week

**BERKSHIRE
HATHAWAY**
HOMESERVICES

LONDON

PROPERTY DETAILS

Guide Price £2,750 per week	Square Footage 1725
Council Tax H	EPC Rating To be confirmed

Situated within the distinctive setting of The Brassworks, this unique two-bedroom apartment resides within a beautifully converted Victorian musical instrument factory.

The apartment offers a spacious reception area, two generous double bedrooms, two contemporary bathrooms, a fully fitted kitchen, and a separate media room, perfect for entertainment or relaxation.

Additional features include access to a beautiful internal courtyard, underground parking, and a 24 hour concierge, ensuring both comfort and convenience. This property is ideal for those seeking a sophisticated home with historical character, in one of London's most sought-after locations.

FEATURES

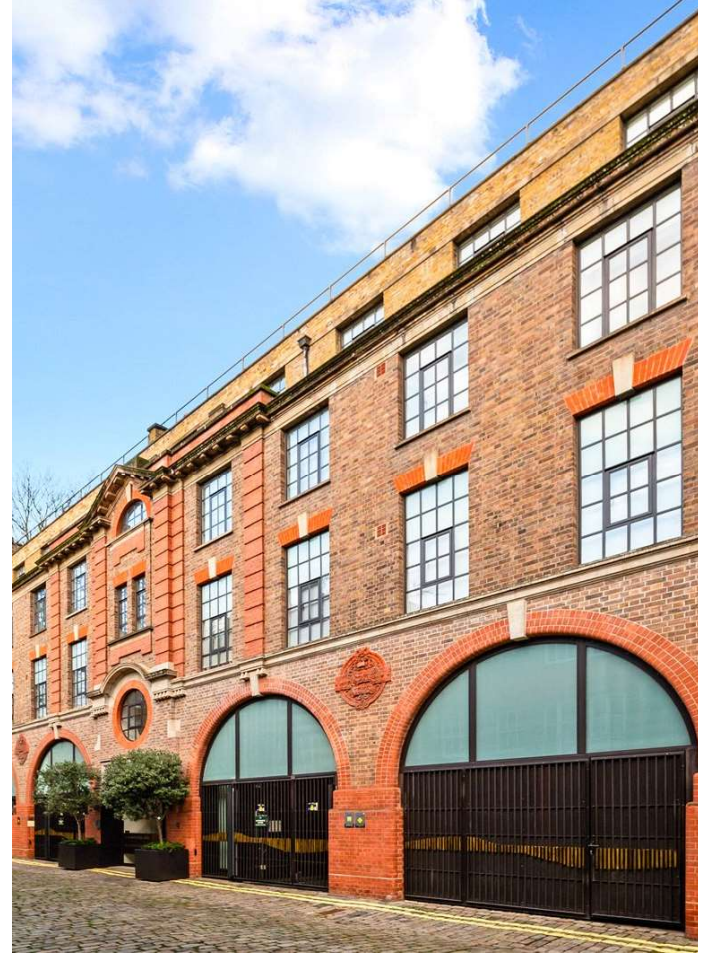
Two Bedrooms
One Reception Room
Two Bathrooms
Concierge/Porter
Furnished
Ground Floor
Patio
24 Hour Security

LOCATION



HYDE PARK LETTINGS
24-25 Albion Street, W2 2AX

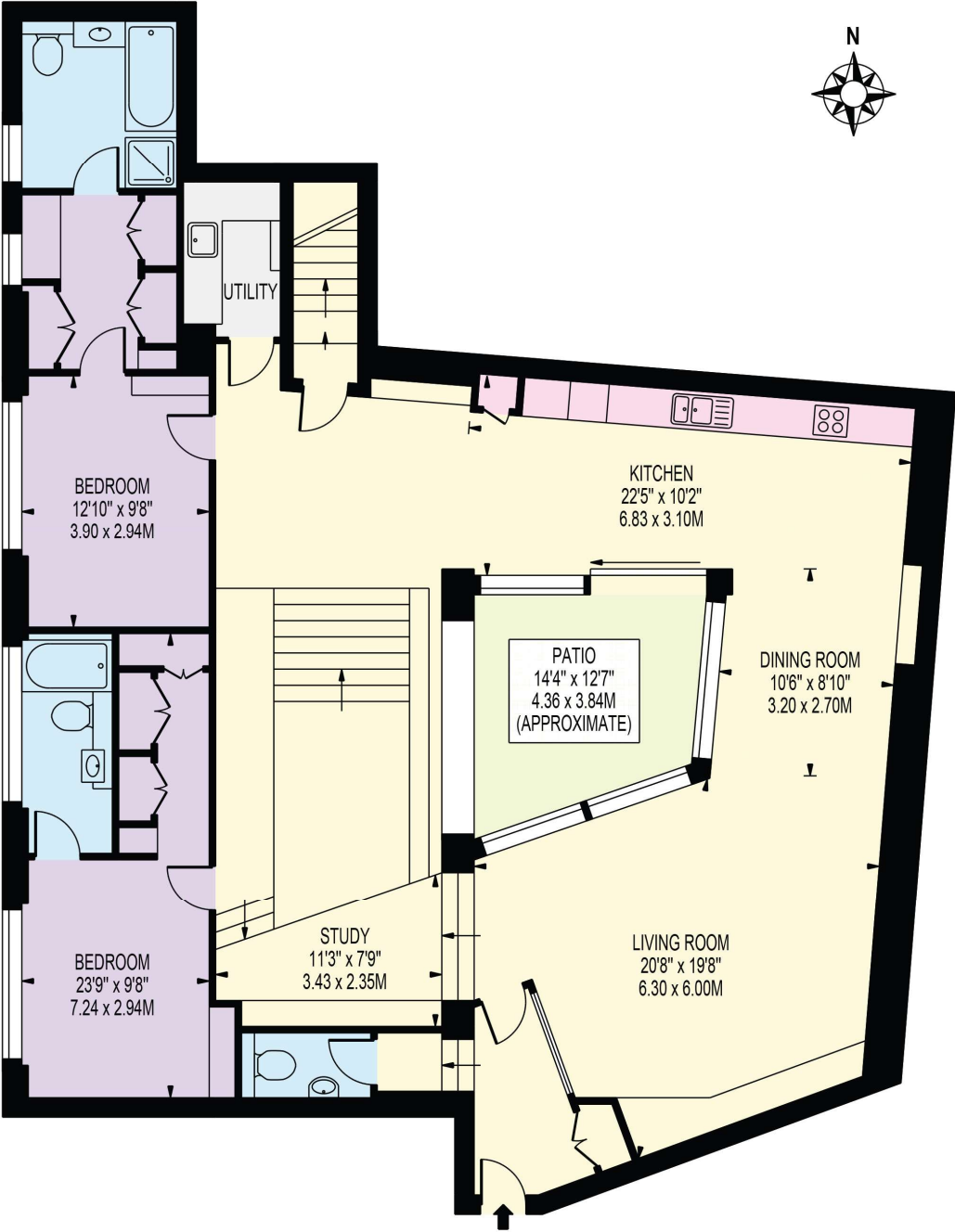
020 7262 2030
lettings.hydepark@bhhs-london.com



FLOORPLAN

THE BRASSWORKS

APPROXIMATE GROSS INTERNAL FLOOR AREA: 1725 SQ FT - 160.23 SQ M



GROUND FLOOR

FOR ILLUSTRATION PURPOSES ONLY

THIS FLOOR PLAN SHOULD BE USED AS A GENERAL OUTLINE FOR GUIDANCE ONLY AND DOES NOT CONSTITUTE IN WHOLE OR IN PART AN OFFER OR CONTRACT. ANY INTENDING PURCHASER OR LESSEE SHOULD SATISFY THEMSELVES BY INSPECTION, SEARCHES, ENQUIRIES AND FULL SURVEY AS TO THE CORRECTNESS OF EACH STATEMENT. ANY AREAS, MEASUREMENTS OR DISTANCES QUOTED ARE APPROXIMATE AND SHOULD NOT BE USED TO VALUE A PROPERTY OR BE THE BASIS OF ANY SALE OR LET.