



Modern Studio in the Heart of Notting Hill

# COLVILLE GARDENS

NOTTING HILL, W11

£425 per week

**BERKSHIRE  
HATHAWAY**  
HOMESERVICES

LONDON

# PROPERTY DETAILS

<b>Guide Price</b> £425 per week	<b>Square Footage</b> 243
<b>Council Tax Band</b> B	<b>EPC Rating</b> C

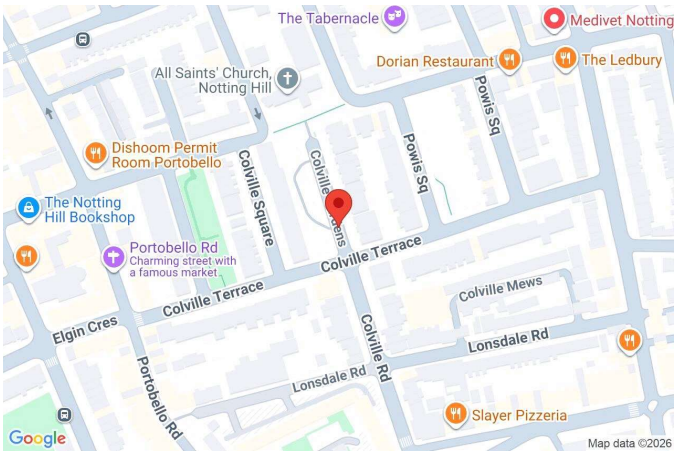
A well-presented studio apartment situated on the 4th floor of a well-maintained building in the highly desirable Coleville Gardens, Notting Hill. This bright studio offers a fantastic living space, with lift access for added convenience. The property features an open-plan layout, with a modern kitchen and a well-equipped bathroom.

Coleville Gardens is located in the heart of Notting Hill, within walking distance of the area's famous markets, cafes, and boutiques. With easy access to Notting Hill Gate tube station, residents can enjoy excellent transport connections to the rest of London.

# FEATURES

- Studio
- Fantastic Living Space
- One Bathroom
- Lift
- Modern Kitchen
- Well-equipped Bathroom
- Wood Flooring

# LOCATION



**HYDE PARK LETTINGS**  
24-25 Albion Street, W2 2AX

020 7262 2030  
lettings.hydepark@bhhs-london.com

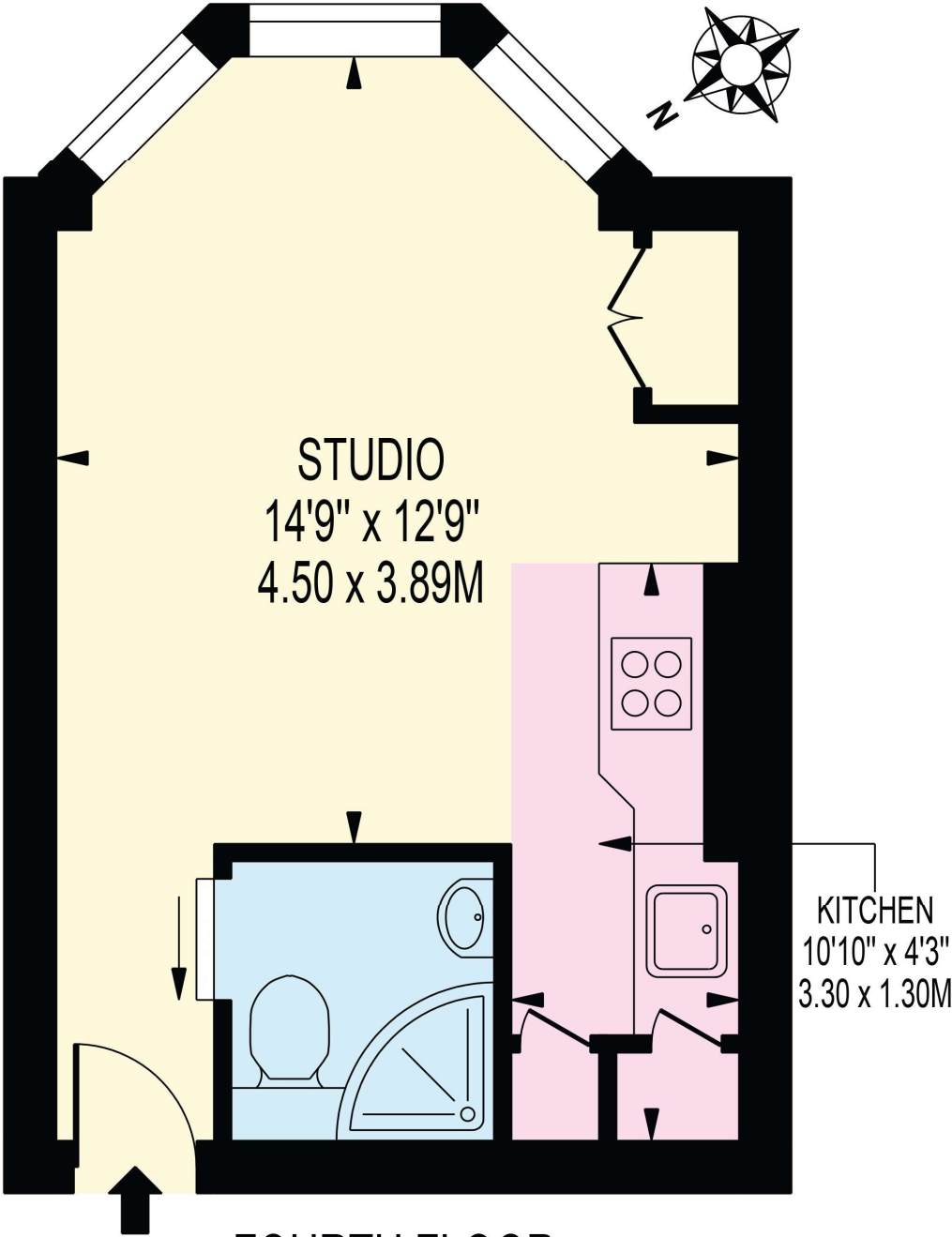




# FLOORPLAN

## PINEHURST COURT

APPROXIMATE GROSS INTERNAL FLOOR AREA: 243 SQ FT - 22.54 SQ M



## FOURTH FLOOR

FOR ILLUSTRATION PURPOSES ONLY

THIS FLOOR PLAN SHOULD BE USED AS A GENERAL OUTLINE FOR GUIDANCE ONLY AND DOES NOT CONSTITUTE IN WHOLE OR IN PART AN OFFER OR CONTRACT. ANY INTENDING PURCHASER OR LESSEE SHOULD SATISFY THEMSELVES BY INSPECTION, SEARCHES, ENQUIRIES AND FULL SURVEY AS TO THE CORRECTNESS OF EACH STATEMENT. ANY AREAS, MEASUREMENTS OR DISTANCES QUOTED ARE APPROXIMATE AND SHOULD NOT BE USED TO VALUE A PROPERTY OR BE THE BASIS OF ANY SALE OR LET.