



Studio with Views in Prime Regent's Place

# BROCK STREET

REGENT'S PLACE, NW1

Asking Price  
£535,000

**BERKSHIRE  
HATHAWAY**  
HOMESERVICES

LONDON

# PROPERTY DETAILS

<b>Guide Price</b> £535,000	<b>Square Footage</b> 339 Sq Ft
<b>Council Tax Band</b> C	<b>EPC</b> B
<b>Ground Rent</b> £350 pa	<b>Service Charge</b> £4,183.34 pa
<b>Tenure</b> Leasehold	

A bright studio with fabulous views located on the 10th floor of the Triton Building, which forms part of the Regent's Place development.

Residents also benefit from 24 hour Concierge.

Regent's Place is conveniently located for Warren Street, Euston Square, Great Portland Street & Regent's Park stations.

Kings Cross, Euston, and St Pancras are also nearby.

## FEATURES

- One Bedroom
- One Reception Room
- One Bathroom
- Concierge/Porter
- Upper Floor
- 24 Hour Security
- Modern
- Lift

## LOCATION



**KINGS CROSS SALES**  
Unit 4,6 Pancras Square, N1C 4AG

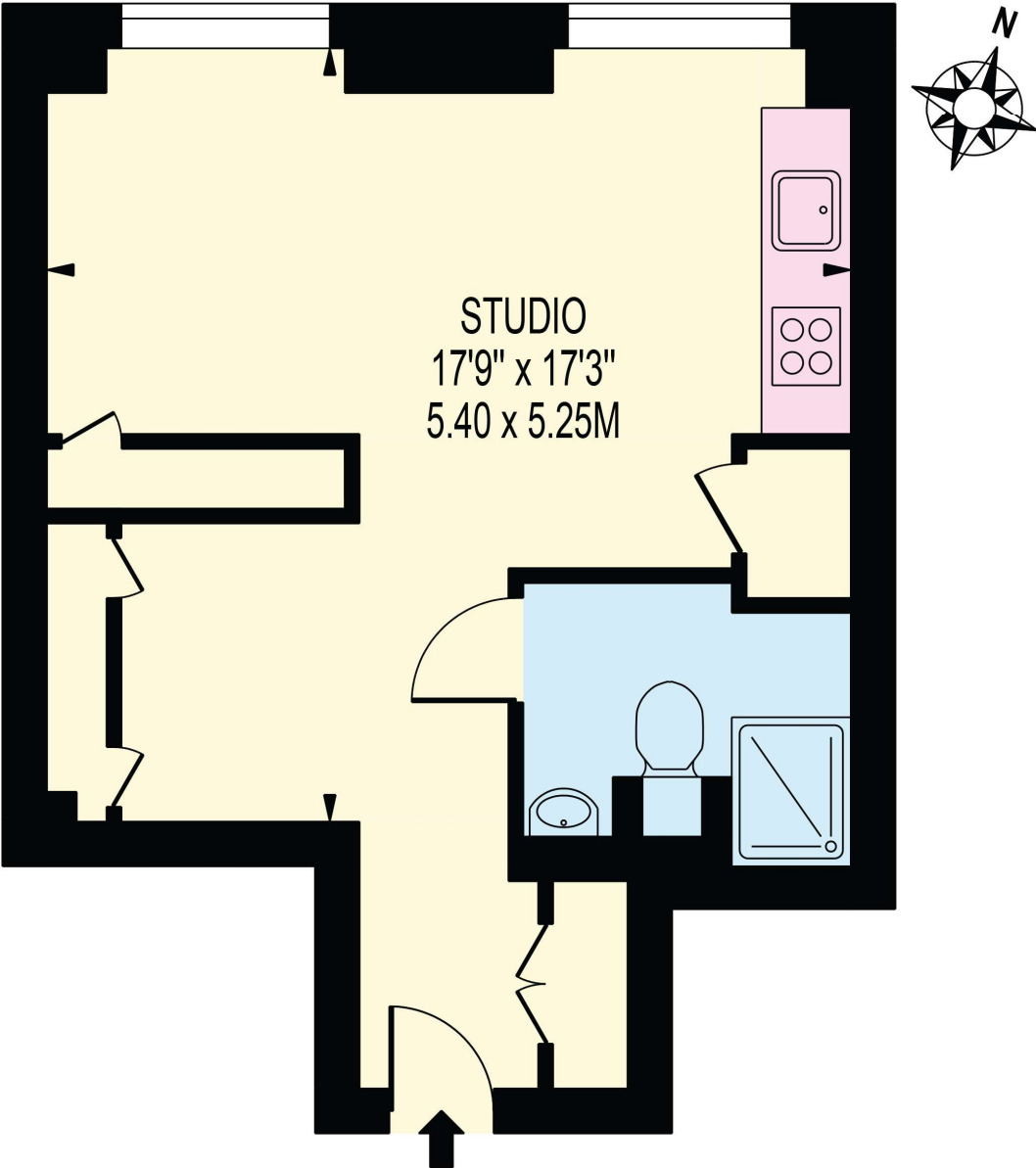
020 7467 2020  
sales.kingscross@bhhs-london.com



# FLOORPLAN

## BROCK STREET

APPROXIMATE GROSS INTERNAL FLOOR AREA: 339 SQ FT - 31.49 SQ M



### TENTH FLOOR

FOR ILLUSTRATION PURPOSES ONLY

THIS FLOOR PLAN SHOULD BE USED AS A GENERAL OUTLINE FOR GUIDANCE ONLY AND DOES NOT CONSTITUTE IN WHOLE OR IN PART AN OFFER OR CONTRACT.  
ANY INTENDING PURCHASER OR LESSEE SHOULD SATISFY THEMSELVES BY INSPECTION, SEARCHES, ENQUIRIES AND FULL SURVEY AS TO THE CORRECTNESS OF EACH STATEMENT.  
ANY AREAS, MEASUREMENTS OR DISTANCES QUOTED ARE APPROXIMATE AND SHOULD NOT BE USED TO VALUE A PROPERTY OR BE THE BASIS OF ANY SALE OR LET.