



Studio Apartment in South Kensington

MANSON PLACE

SW7

£450 per week

**BERKSHIRE
HATHAWAY**
HOMESERVICES

LONDON

PROPERTY DETAILS

Guide Price

£450 per week

Square Footage

291

Council Tax Band

F

EPC Rating

E

A modern studio flat in this period building in South Kensington . The flat has been recently refurbished and features a bedroom area off the reception room.

Manson Place is positioned at the south end of Queen's Gate a few minutes' walk from South Kensington underground station , restaurants and museums.

FEATURES

Studio

One Reception Room

One Bathroom

Residents Parking

Furnished

LOCATION



KNIGHTSBRIDGE LETTINGS

55-57 SLOANE AVENUE, SW3 3DH

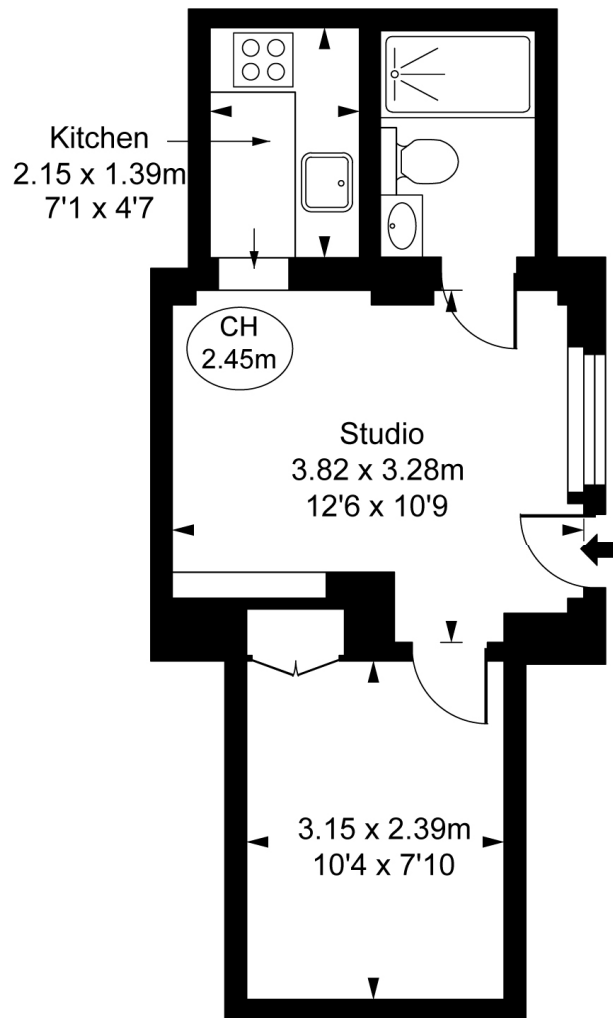
020 7235 9641

lettings.knightsbridge@bhhs-london.com



FLOORPLAN

Manson Place, SW7
Approximate Gross Internal Area
27.05 sq m / 291 sq ft
(CH = Ceiling Heights)



Lower Ground Floor

This plan is not to scale. It is for guidance and not for valuation purposes.
All measurements and areas are approximate only, and have been prepared in accordance with the current edition of the RICS Code of Measuring Practice.
© Fulham Performance