



BOURLET CLOSE

PROPERTY DETAILS

Guide Price £4,950,000	Square Footage 3,448 Sq Ft
EPC Rating D	Council Tax Band H

Tenure
Freehold



FEATURES

- Four bedrooms
- Five bathrooms
- Two reception rooms
- Private Parking
- Garage
- Swimming Pool
- End of Terrace
- Patio
- Roof Terrace
- Balcony



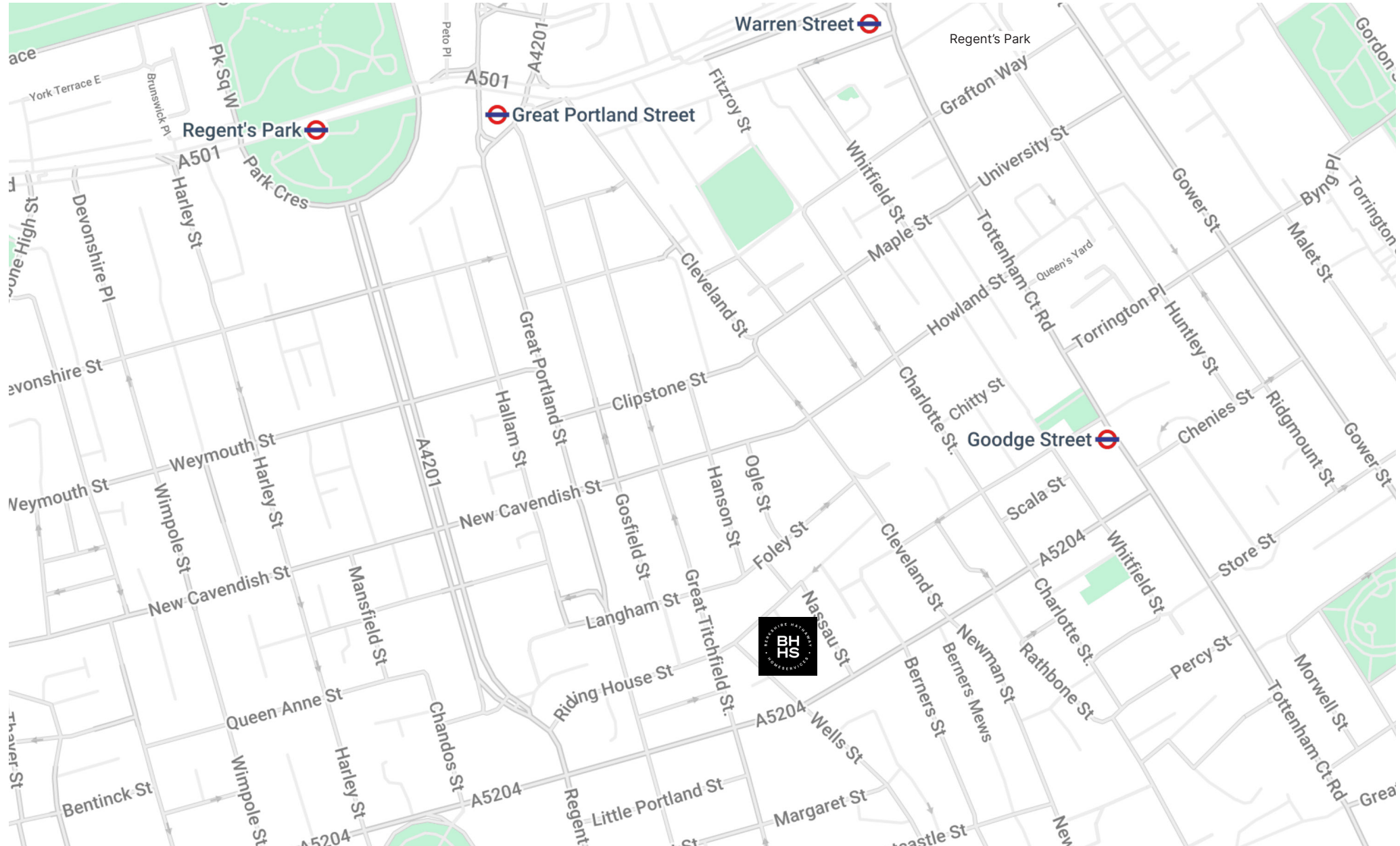


This light-filled Fitzrovia home boasts four bedrooms, five bathrooms and an array of fabulous features with abundant character. A striking window stretches from the lower ground floor to the first floor in the reception and open-plan dining area, flooding the space with natural light. This inviting atmosphere continues throughout the home, with every room enjoying bursts of light and a warm, welcoming feel.

On the lower level, a private spa retreat awaits, complete with a swimming pool, sauna, jacuzzi, and shower room—ideal for relaxation and entertaining. The modern kitchen opens onto a serene courtyard oasis, offering a secluded spot for outdoor dining. The first floor houses the principal suite, which includes an en suite bathroom, ample built-in storage, and eye-catching crystal glass ceiling windows. Each additional bedroom features its own en suite bathroom, while the fourth bedroom on the second floor offers added privacy and access to a charming roof terrace.

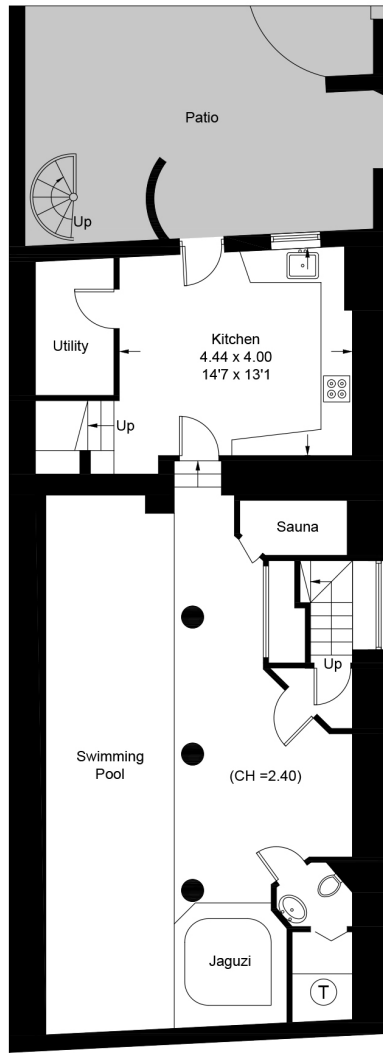
Natural wooden beams and sleek industrial steel columns infuse the home with a blend of character and style, showcasing a unique combination of bold design elements and a warm home to be enjoyed.

Located in the heart of Fitzrovia, Bourlet Close is just moments from Oxford Circus, Tottenham Court Road, and Great Portland Street stations, providing unparalleled convenience in one of London's most desirable neighborhoods.

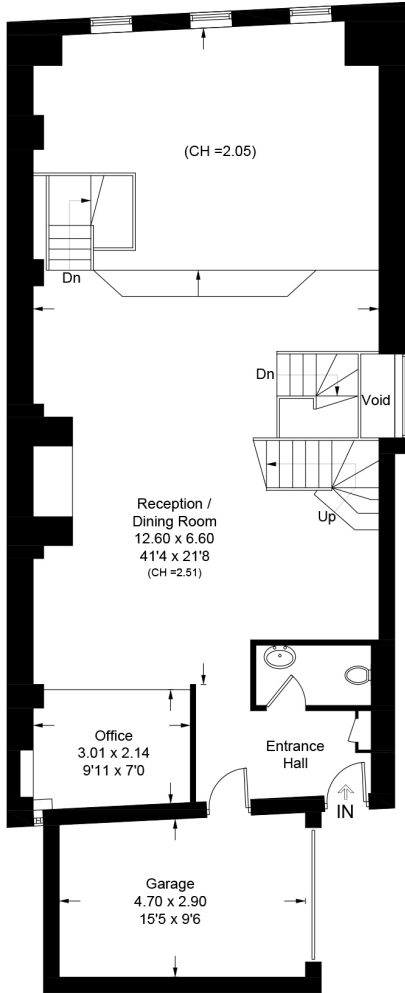


FLOOR PLANS - BOURLET CLOSE

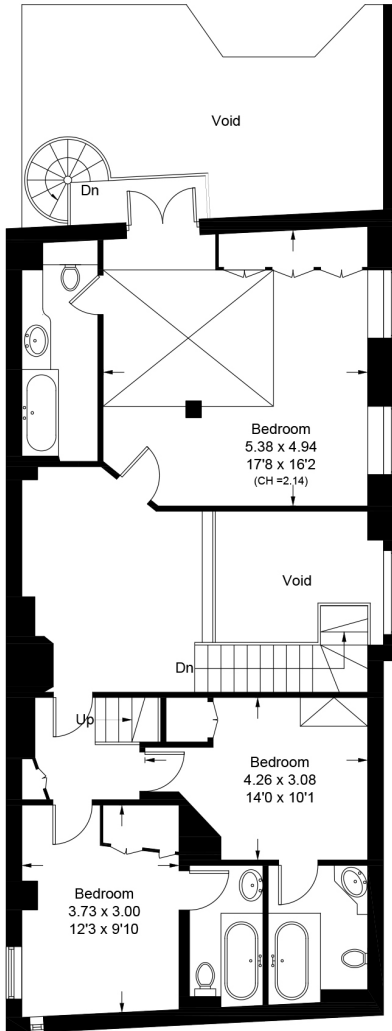
Approximate Area = 320.3 sq m / 3448 sq ft
(Including Garage / Excluding Voids)



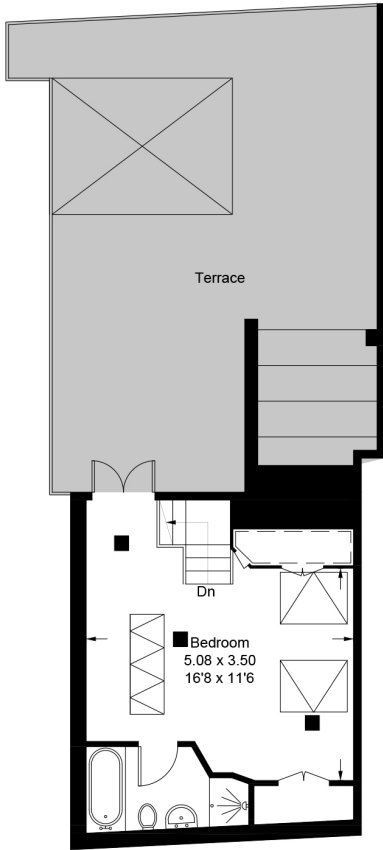
Basement Floor



Ground Floor



First Floor



Second Floor









**BERKSHIRE
HATHAWAY**
HOMESERVICES

LONDON

MARYLEBONE SALES

20A Paddington Street, W1U 5QP

020 7486 6338

sales.marylebone@bhhs-london.com



Consumer Protection from Unfair Trading Regulations 2008. These details are for guidance only and complete accuracy cannot be guaranteed. If there is any point, which is of particular importance, verification should be obtained. They do not constitute a contract or part of a contract. All measurements are approximate. No guarantee can be given with regard to planning permissions or fitness for purpose. No apparatus, equipment, fixture or fitting has been tested. Items shown in photographs are NOT necessarily included. Interested Parties are advised to check availability and make an appointment to view before travelling to see a property. A member of the franchise system of BHH Affiliates, LLC