



BRYANSTON COURT

MARYLEBONE, W1H

PROPERTY DETAILS

Guide Price £2,950,000	Square Footage 2,044 Approx	Ground Rent £4,250 PA
EPC Rating C	Council Tax Band H	Service Charge £11,946 PA
Tenure Share of Freehold 979 years		

DESCRIPTION

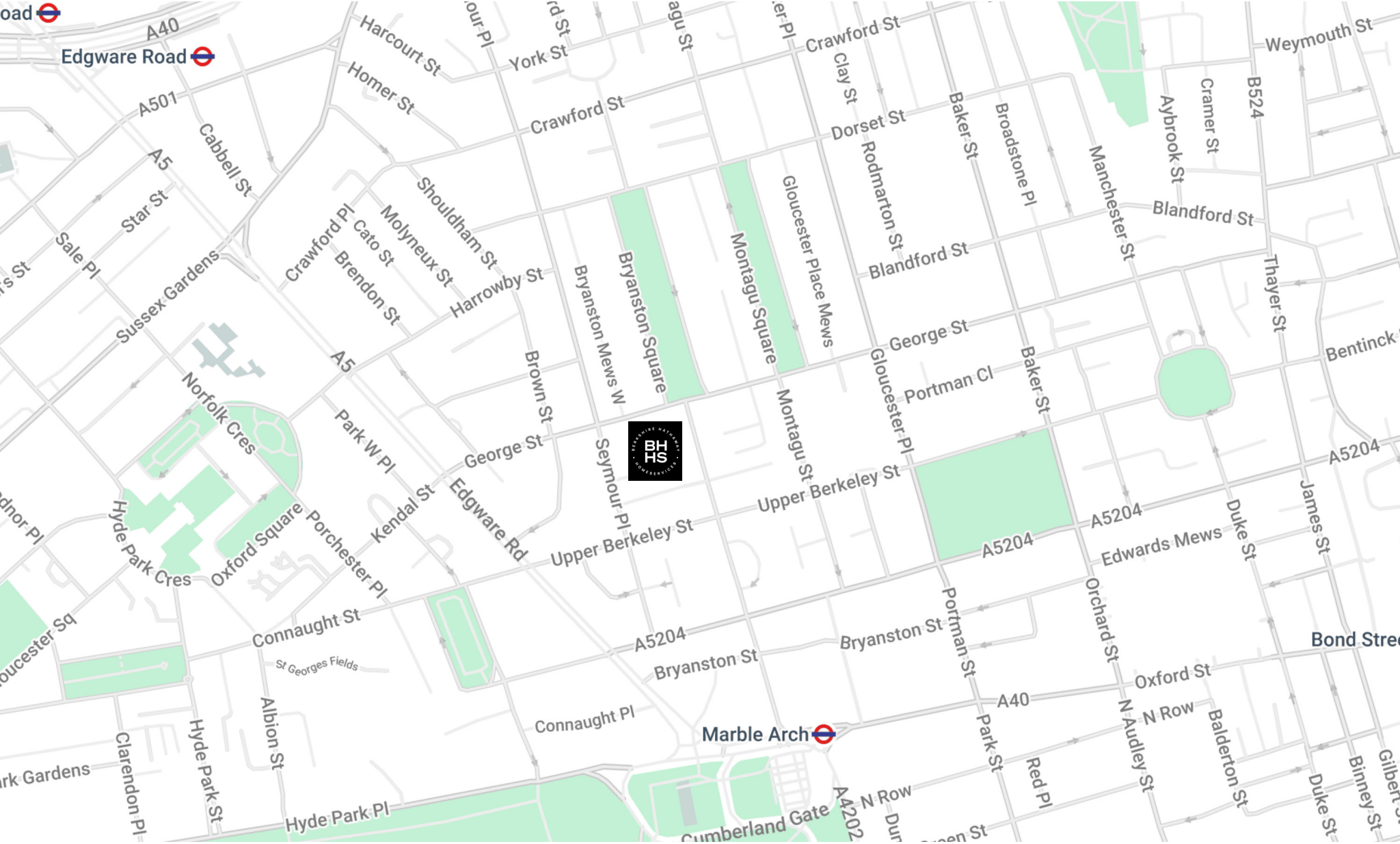
Nestled on the fourth floor of one of Marylebone’s finest portered blocks, this expansive 1,826 sq ft apartment embodies refined living. The property offers an exceptional layout, perfect for both relaxation and entertainment. The entrance features generous open-plan living and entertaining spaces that exude an air of elegance. Two ensuite bedrooms and a master bedroom suite offer comfort and space.

The apartment is complimented by a recently completed refurbishment of the building’s communal parts.

With its prime location in one of London’s most prestigious neighborhoods, this residence offers the perfect balance of tranquility and city living.

FEATURES

Three bedrooms
Two Reception Rooms
Three Bathrooms
Residents Parking
24 Hour Security
Concierge / Porter
Lift
Period





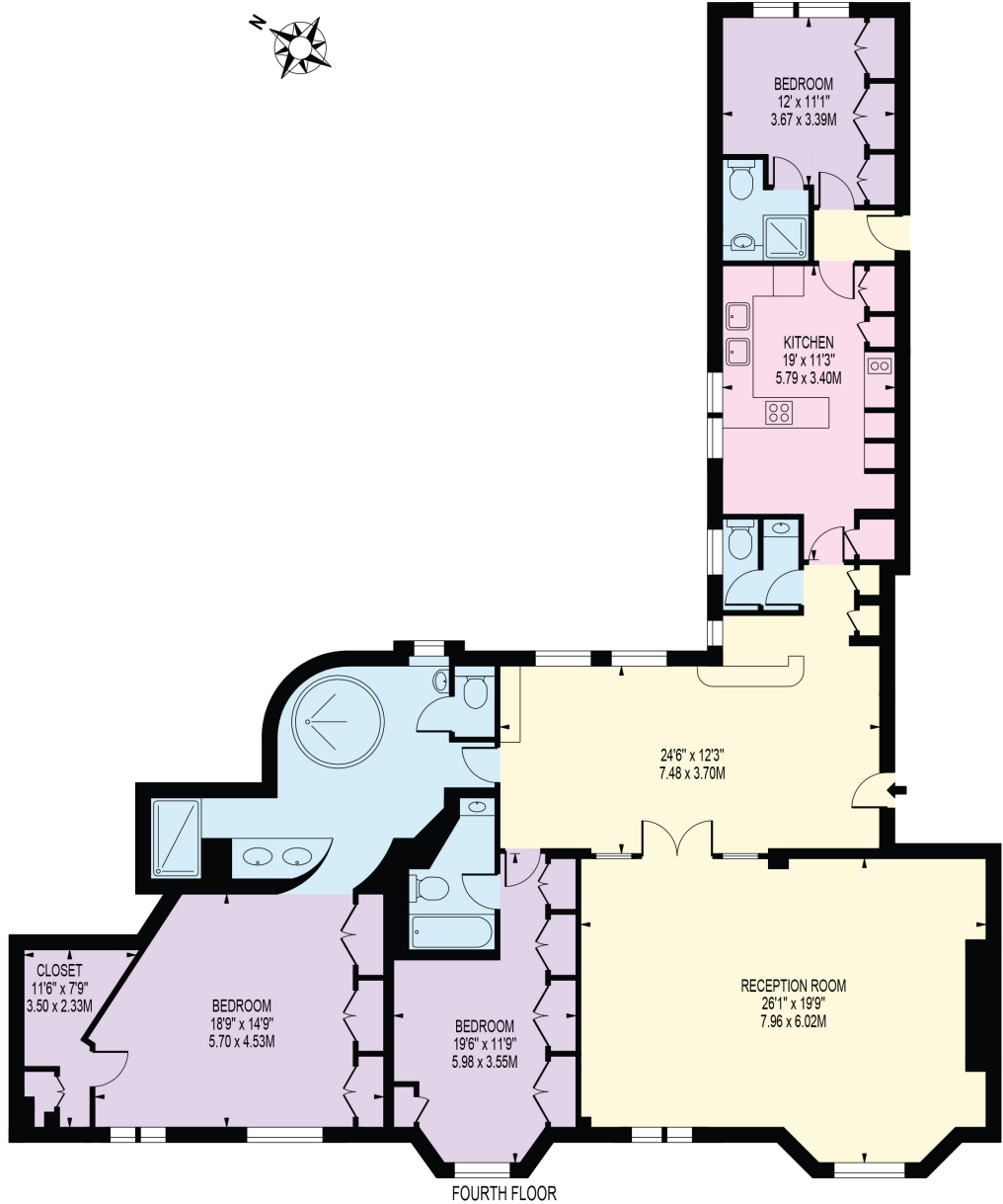






FLOOR PLAN - BRYANSTON COURT

APPROXIMATE GROSS INTERNAL FLOOR AREA: 2044 SQ FT - 189.94 SQ M



**BERKSHIRE
HATHAWAY**
HOMESERVICES

LONDON

MARYLEBONE SALES

20A PADDINGTON STREET, W1U 5QP

020 7486 6338

sales.marylebone@bhhs-london.com



Consumer Protection from Unfair Trading Regulations 2008. These details are for guidance only and complete accuracy cannot be guaranteed. If there is any point, which is of particular importance, verification should be obtained. They do not constitute a contract or part of a contract. All measurements are approximate. No guarantee can be given with regard to planning permissions or fitness for purpose. No apparatus, equipment, fixture or fitting has been tested. Items shown in photographs are NOT necessarily included. Interested Parties are advised to check availability and make an appointment to view before travelling to see a property. A member of the franchise system of BHH Affiliates, LLC