



Lateral Four Bedroom Apartment with High Ceilings

HYDE PARK STREET

HYDE PARK ESTATE, W2

Offers in excess of
£5,500,000

**BERKSHIRE
HATHAWAY**
HOMESERVICES

LONDON

PROPERTY DETAILS

Guide Price £5,500,000	Square Footage 2898
Council Tax Band H	EPC D
Tenure Share of Freehold	Service Charge £20,00 pa

Introducing a stunning four-bedroom lateral ground floor apartment in the heart of Connaught Village. Located directly opposite Hyde Park, this beautiful white stucco building offers the perfect blend of park-side tranquillity and urban convenience. Enjoy close proximity to Marble Arch and the vibrant amenities of Oxford Street while indulging in the benefits of park living.

This exceptional apartment boasts 4-meter ceilings throughout, creating an expansive and airy atmosphere. The interiors seamlessly blend modern sophistication with period charm, offering a unique living experience. The spacious layout includes a grand double reception room, four generously sized double bedrooms, and elegantly designed bathrooms.

The property also features a small private terrace, perfect for relaxing or entertaining guests. The building provides the added convenience of a porter, ensuring security and assistance at all times. Experience the best of both worlds with this remarkable apartment, combining contemporary luxury with timeless elegance in one of London's most prestigious neighbourhoods.

Connaught Village is nestled between the expansive greenery of Hyde Park and the bustling energy of Oxford Street. This prime location provides residents with the perfect balance of serene park-side living and immediate access to world-class shopping, dining, and entertainment. Connaught Village offers superb connectivity with multiple underground stations nearby, including Marble Arch, Paddington, and Lancaster Gate. Paddington Station also provides direct links to Heathrow Airport via the Heathrow Express, making international travel convenient.

FEATURES

Four Bedrooms

Two Reception Room

Four Bathrooms

Concierge/Porter

Ground Floor

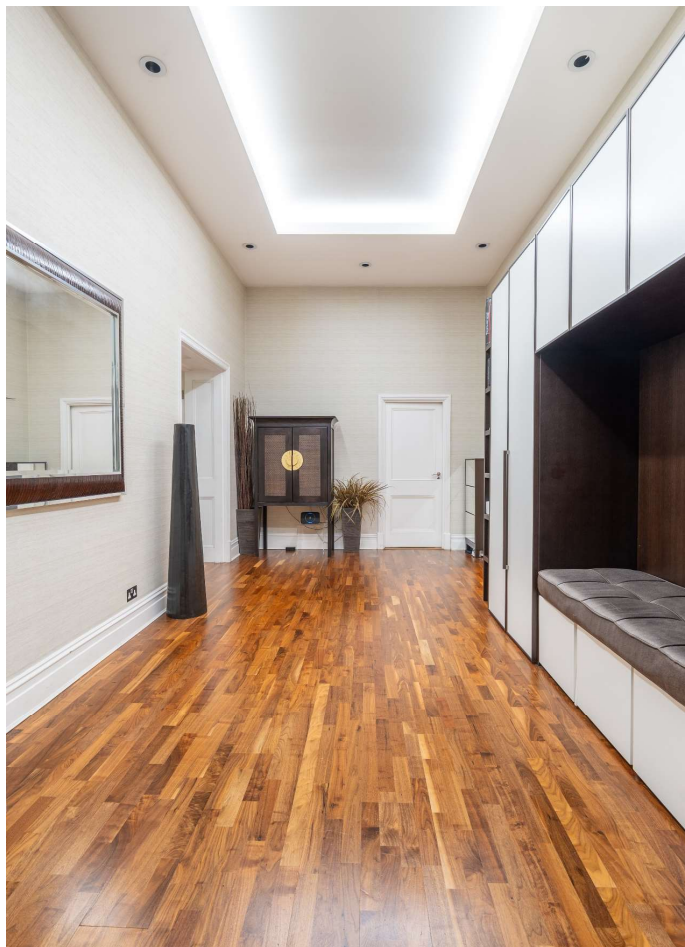
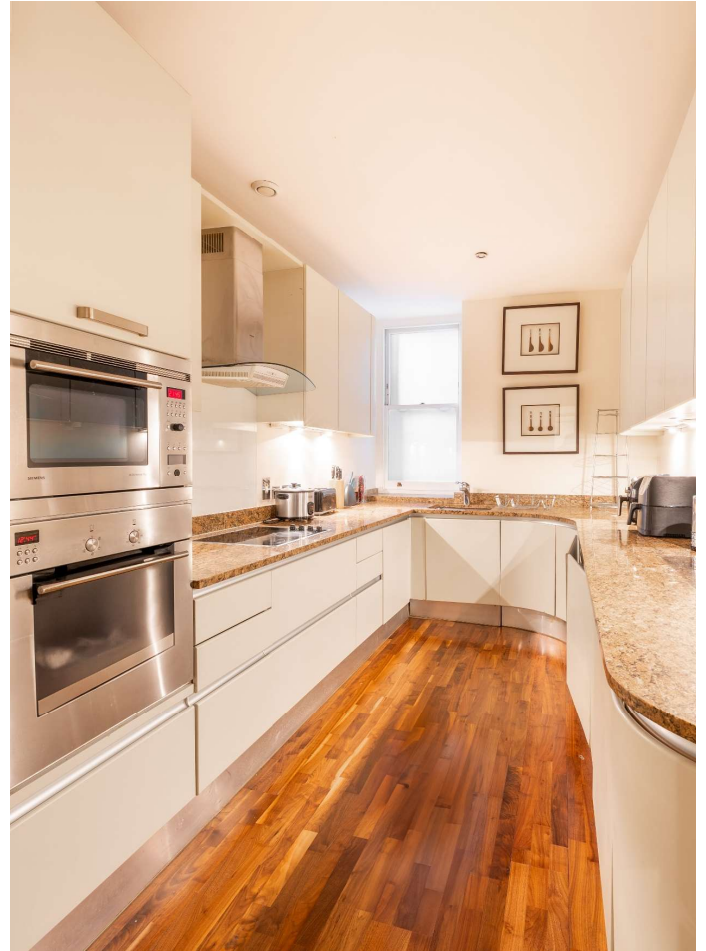
Balcony

LOCATION



HYDE PARK SALES
24-25 Albion Street, W2 2AX

020 7262 2030
sales.hydepark@bhhs-london.com



FLOORPLAN

Hyde Park Street, W2
Gross internal area (approx.)
269 Sq m (2898 Sq ft)
For identification only, Not to Scale



For guidance only and must not be relied upon as a statement of fact.
All measurements and areas are approximate only (and have been prepared in accordance with the current edition of the RICS Code of Measuring Practice).

