



Exceptional Three Bedroom House With Garage
And Outside Space In W2

SOMERS CRESCENT

HYDE PARK ESTATE, W2

Asking Price
£4,500,000

**BERKSHIRE
HATHAWAY**
HOMESERVICES

LONDON

PROPERTY DETAILS

Guide Price £4,500,000	Square Footage 2614
Council Tax Band H	EPC D
Tenure Freehold	

FEATURES

Three/Five Bedrooms

Two Receptions Rooms

Four Bathrooms/Two WC's

Residents Parking/Garage

Roof Terraced/Patio

2614 Sq Ft Approximately

Council Tax Band: H

EPC Rating: D

Nestled in the heart of the coveted W2 district, this stunning 3-bedroom house on Somers Crescent is the epitome of modern elegance and sophisticated living. Designed with meticulous attention to detail, this beautifully presented home offers a seamless blend of contemporary style and functional design, making it an ideal choice for both a family residence and a pied-à-terre.

The house boasts three generously sized bedrooms, each with ample storage and large windows that flood the rooms with natural light.

One of the standout features of this property is its two expansive terraces, providing an oasis of tranquillity amidst the vibrant city. These outdoor spaces are perfect for al fresco dining, relaxing with a book, or enjoying a morning coffee while taking in the surrounding views.

For added convenience, the house includes a private garage, a rare find in this prime location. This feature ensures secure parking and additional storage space, enhancing the practicality of this exceptional home.

Situated in a fantastic location, Somers Crescent offers easy access to the best of what London has to offer. Excellent transport links of Paddington Station and Edgware Road, top-rated schools, and a variety of shops, restaurants, and cultural attractions are all within close proximity, making it an ideal location for modern urban living.

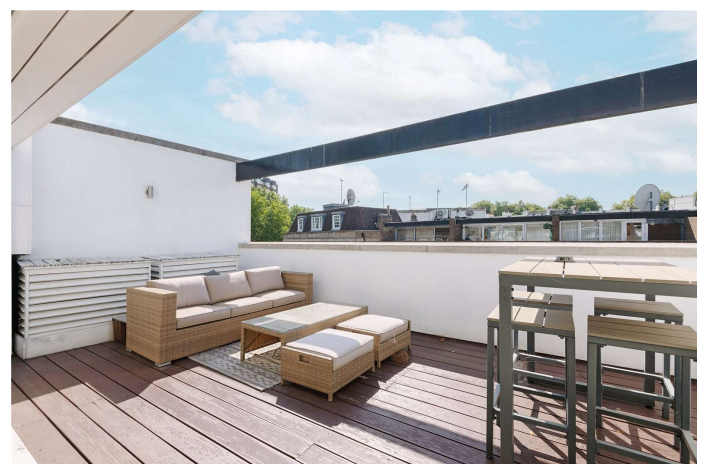
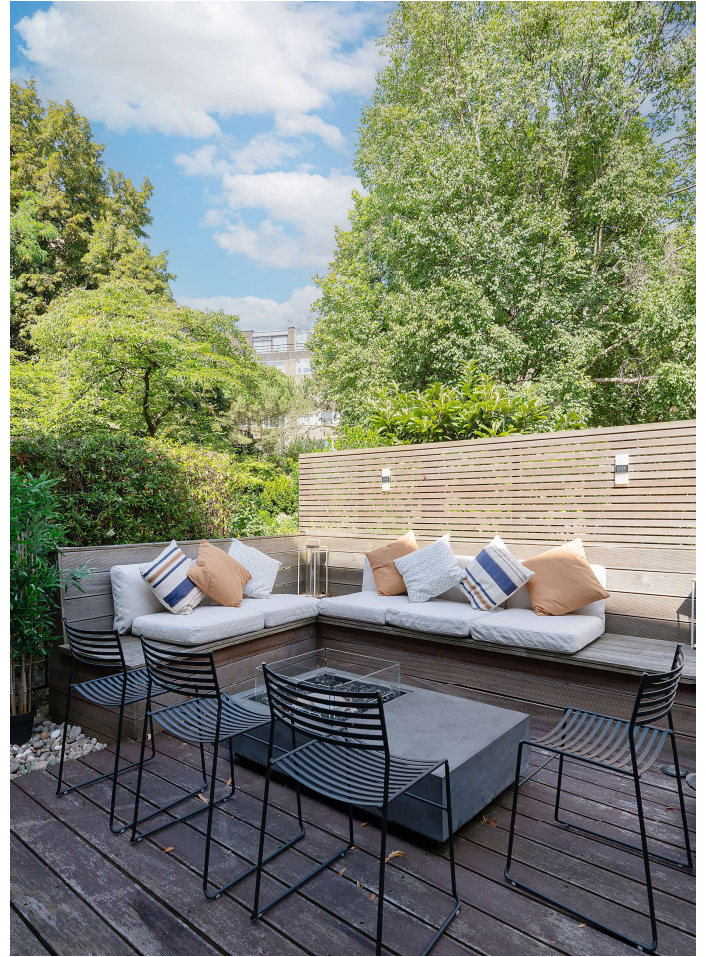
This exquisite house on Somers Crescent truly embodies the perfect balance of luxury, comfort, and convenience, making it an ideal family home or a sophisticated pied-à-terre.

LOCATION



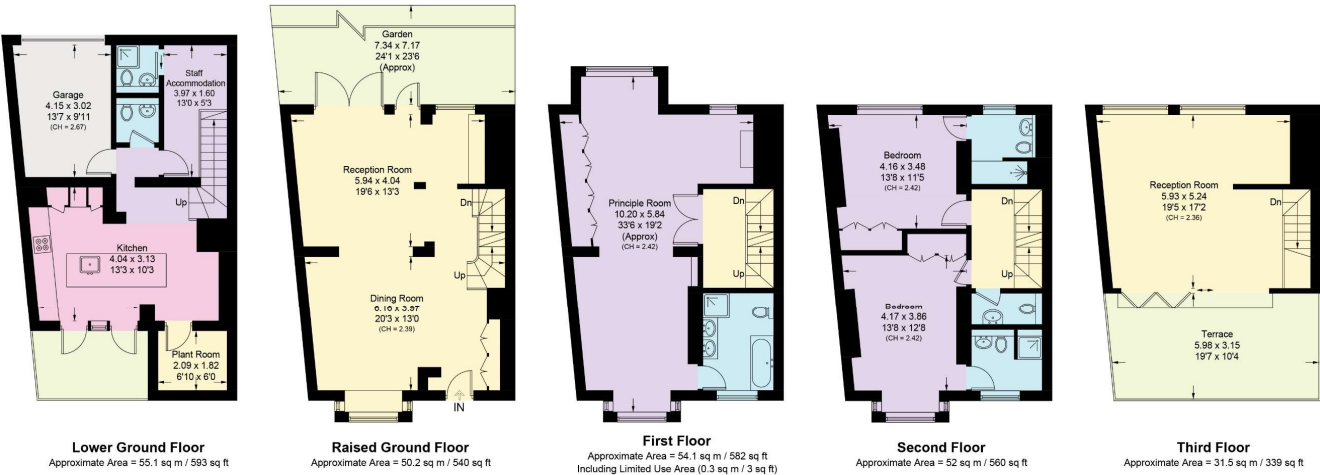
HYDE PARK SALES
24-25 Albion Street, W2 2AX

020 7262 2030
sales.hydepark@bhhs-london.com



FLOORPLAN

Somers Crescent, W2
Approximate Area = 242.9 sq m / 2614 sq ft
Including Limited Use Area (0.3 sq m / 3 sq ft) and Garage



Surveyed and drawn in accordance with the International property measurements standards (IPMS 2: Residential) Not drawn to scale unless stated.
Whilst every care is taken in the preparation of this plan, please check all dimensions, shapes and compass bearings before making any decisions reliant upon them.