



Two Bed Period Apartment with Outside Space

# GLOUCESTER TERRACE

HYDE PARK ESTATE, W2

Offers in excess of  
£700,000

**BERKSHIRE  
HATHAWAY**  
HOMESERVICES

LONDON

## PROPERTY DETAILS

<b>Guide Price</b> £700,000	<b>Square Footage</b> 545
<b>Council Tax Band</b> E	<b>EPC</b> D
<b>Service Charge</b> £4,321 pa	<b>Tenure</b> Share of Freehold

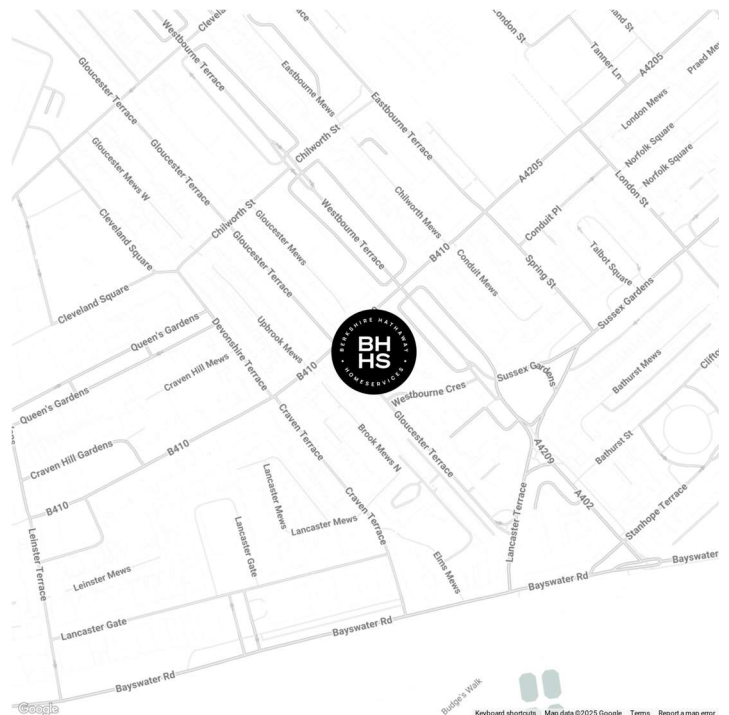
A spacious two-bedroom apartment in a beautiful white stucco period building, offered with a Share of Freehold. The apartment features a classic contemporary interior with a modern fitted kitchen, modern bathroom, bright reception room with a small balcony, and two double bedrooms, including a large south-facing terrace leading out from the primary bedroom.

Gloucester Terrace is a short walk from local transport links, including Paddington Station (Elizabeth Line, Bakerloo, Circle & District, and Hammersmith & City Lines), National Rail services, and the Heathrow Express. An abundance of charming cafes, bars, and restaurants are also within walking distance, as is the peaceful Paddington Basin.

## FEATURES

- Two Double Bedrooms
- One Reception Room
- One Bathroom
- Residents Parking
- Upper Floor
- Two Balconies
- Lift

## LOCATION



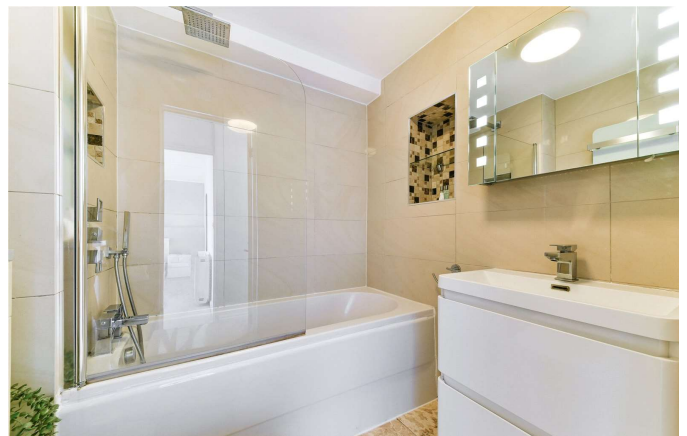
## HYDE PARK SALES

24-25 Albion Street, W2 2AX

020 7262 2030

[sales.hydepark@bhhs-london.com](mailto:sales.hydepark@bhhs-london.com)

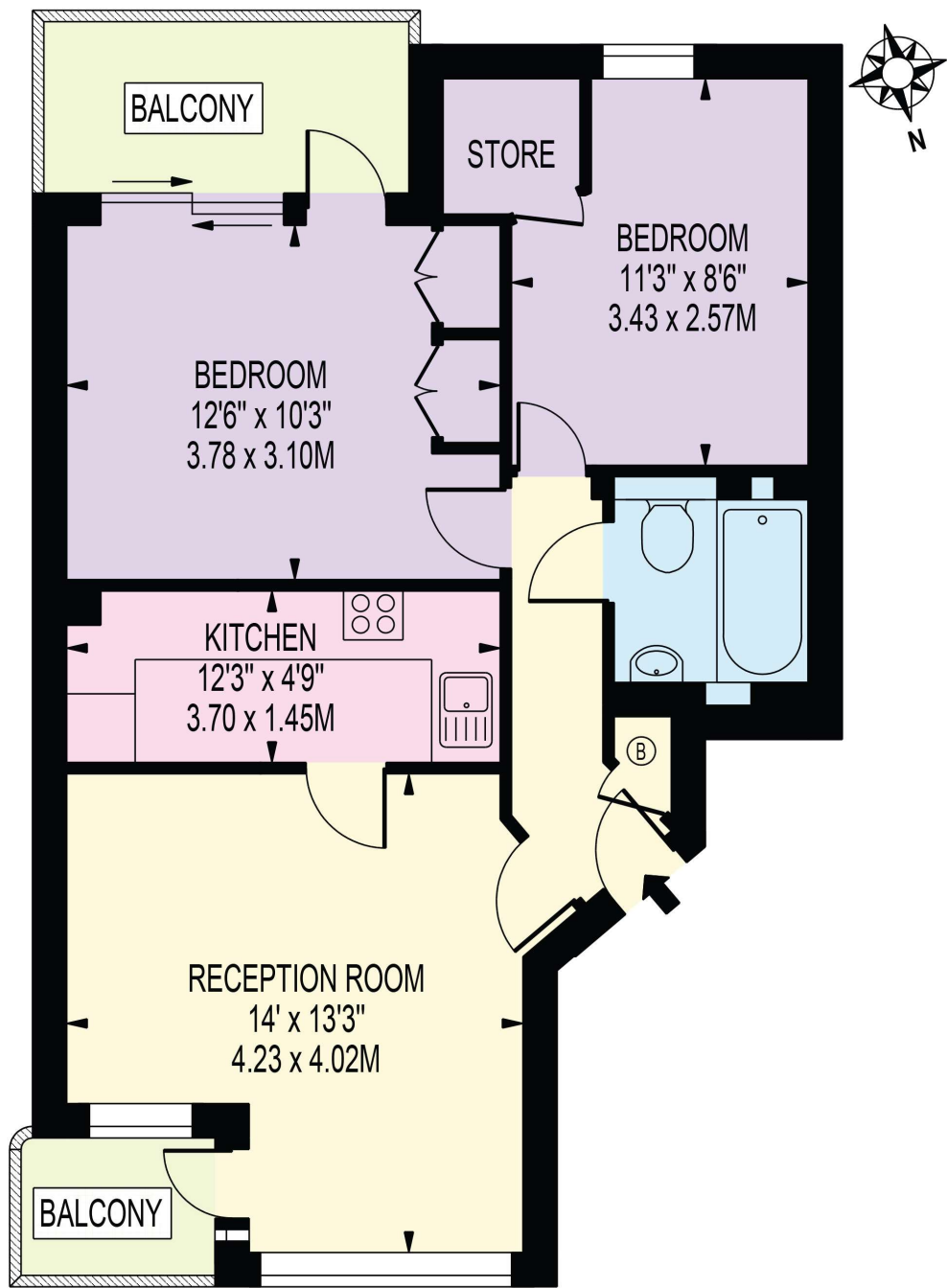




# FLOORPLAN

## GLOUCESTER TERRACE

APPROXIMATE GROSS INTERNAL FLOOR AREA: 545 SQ FT - 50.63 SQ M



### FIFTH FLOOR

FOR ILLUSTRATION PURPOSES ONLY

THIS FLOOR PLAN SHOULD BE USED AS A GENERAL OUTLINE FOR GUIDANCE ONLY AND DOES NOT CONSTITUTE IN WHOLE OR IN PART AN OFFER OR CONTRACT. ANY INTENDING PURCHASER OR LESSEE SHOULD SATISFY THEMSELVES BY INSPECTION, SEARCHES, ENQUIRIES AND FULL SURVEY AS TO THE CORRECTNESS OF EACH STATEMENT. ANY AREAS, MEASUREMENTS OR DISTANCES QUOTED ARE APPROXIMATE AND SHOULD NOT BE USED TO VALUE A PROPERTY OR BE THE BASIS OF ANY SALE OR LET.