



Stunning Contemporary Lateral Apartment W2

FREDERICK CLOSE

HYDE PARK, W2

Asking Price
£3,000,000

**BERKSHIRE
HATHAWAY**
HOMESERVICES

LONDON

PROPERTY DETAILS

Guide Price £3,000,000	Square Footage 1702
Council Tax Band H	EPC B
Ground Rent £250 pa	Service Charge £16,000 pa
Tenure Leasehold	

FEATURES

- Three Bedrooms
- One Reception Room
- Three Bathrooms
- Lift
- Upper Floor
- Large Windows
- Off Street Parking, Garage

Situated within the distinctive setting of The Brassworks, this unique three-bedroom apartment resides within a beautifully converted Victorian musical instrument factory. Embracing contemporary luxury within a historic backdrop, this second floor apartment offers a blend of character and sophistication. The well-appointed kitchen features integrated appliances, while the light-filled living area showcases large windows that flood the space with natural light. The bathroom exudes modern elegance with its sleek fixtures. Boasting a convenient lift for easy access, this apartment seamlessly combines style and functionality. Take advantage of this rare opportunity to own a piece of history in The Brassworks. Arrange a viewing today to discover the charm of this exclusive residence.

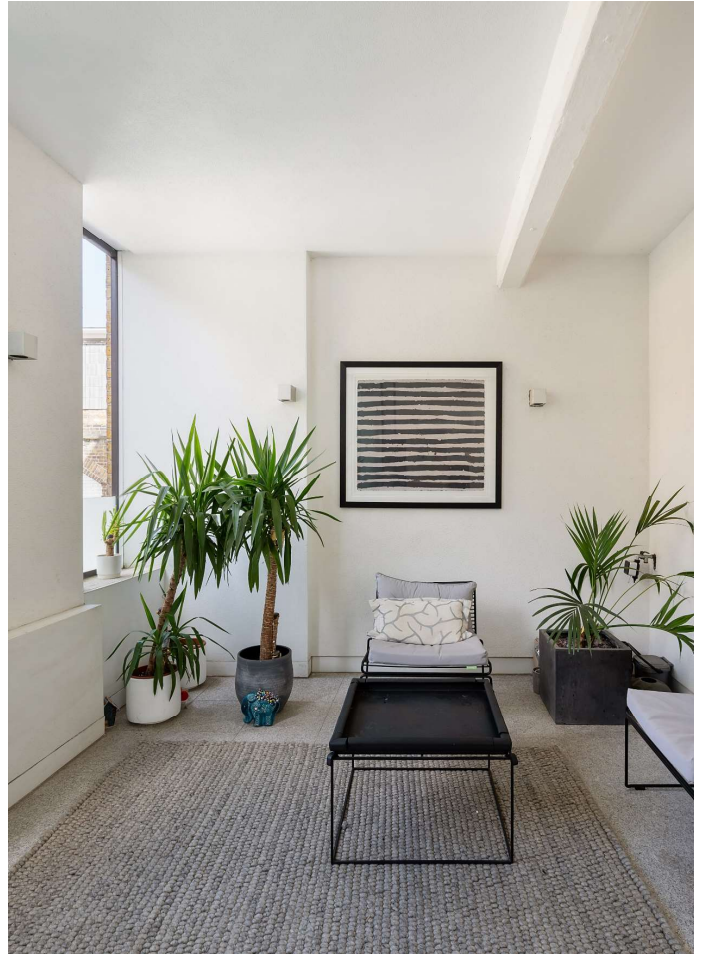
Located on the peaceful Frederick Close, the boutique shops and restaurants of Connaught Village are only a short walk away, with easy access to Hyde Park and Marble Arch. Local transportation links include Marble Arch Underground Station (Central Line), Paddington Underground Station (Bakerloo, Circle and District & Circle and Hammersmith Lines), Paddington Rail Station (Heathrow Express), and Edgware Road Underground Station (Circle and Hammersmith & City & Circle and District Lines).

LOCATION



HYDE PARK SALES
24-25 Albion Street, W2 2AX

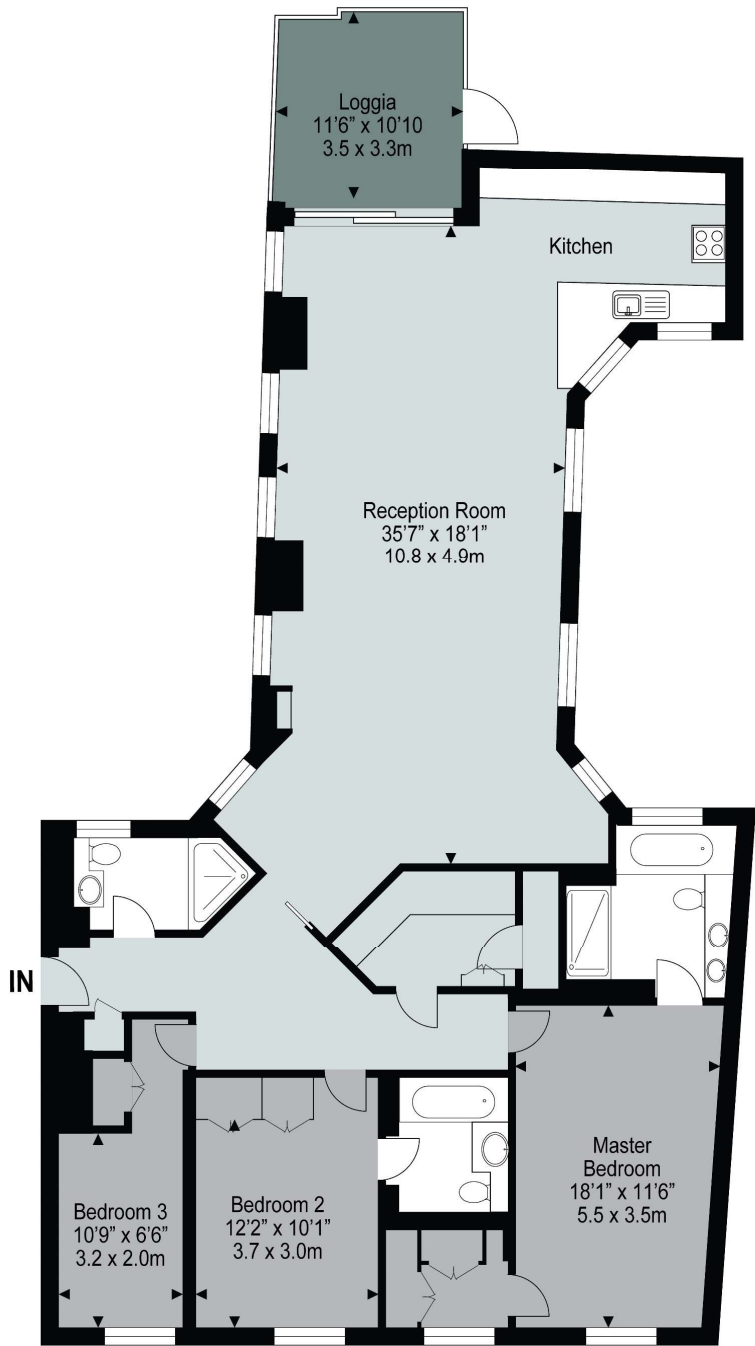
020 7262 2030
sales.hydepark@bhhs-london.com



FLOORPLAN

5-THE BRASSWORKS

Approximate Gross Internal Area
1,702 Sq.Ft / 158 Sq.m



Second Floor

Measurements are approximate, not to scale