



Four Bedroom Lateral Apartment in a Portered
Block in the Heart of Marylebone

BAKER STREET

MARYLEBONE, NW1

£1,730.76 per week

**BERKSHIRE
HATHAWAY**
HOMESERVICES

LONDON

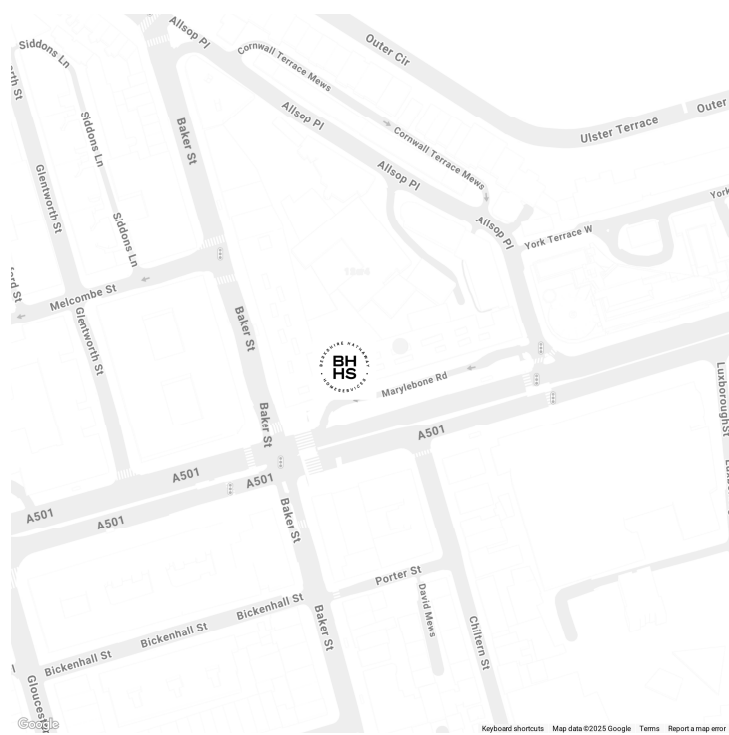
PROPERTY DETAILS

Guide Price £1,730.76 per week	Square Footage 1687	A spacious, newly refurbished four-bedroom lateral apartment in a prestigious purpose-built block on Baker Street.
Council Tax Band G	EPC Rating D	The property comprises a double reception room, modern kitchen, four bedrooms, three bathrooms, two of which are en-suite.
		Additionally, it features wooden floors, lift access, and concierge services.
		With excellent transport links located nearby at Baker Street and the charming Marylebone Village just a short walk away, offering an array of local shops and eateries, residents enjoy both convenience and luxury.

FEATURES

Four Bedrooms
Two Reception Rooms
Three Bathrooms
Furnished
Lift
Upper Floor
24 Hour Security

LOCATION

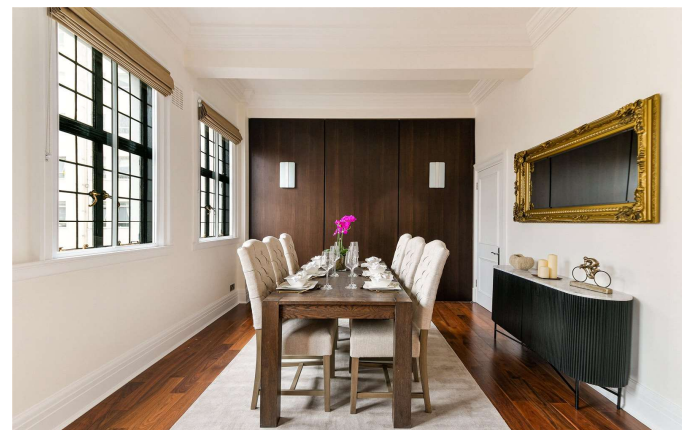


MARYLEBONE LETTINGS

20A Paddington Street, W1U 5QP

020 7486 6338

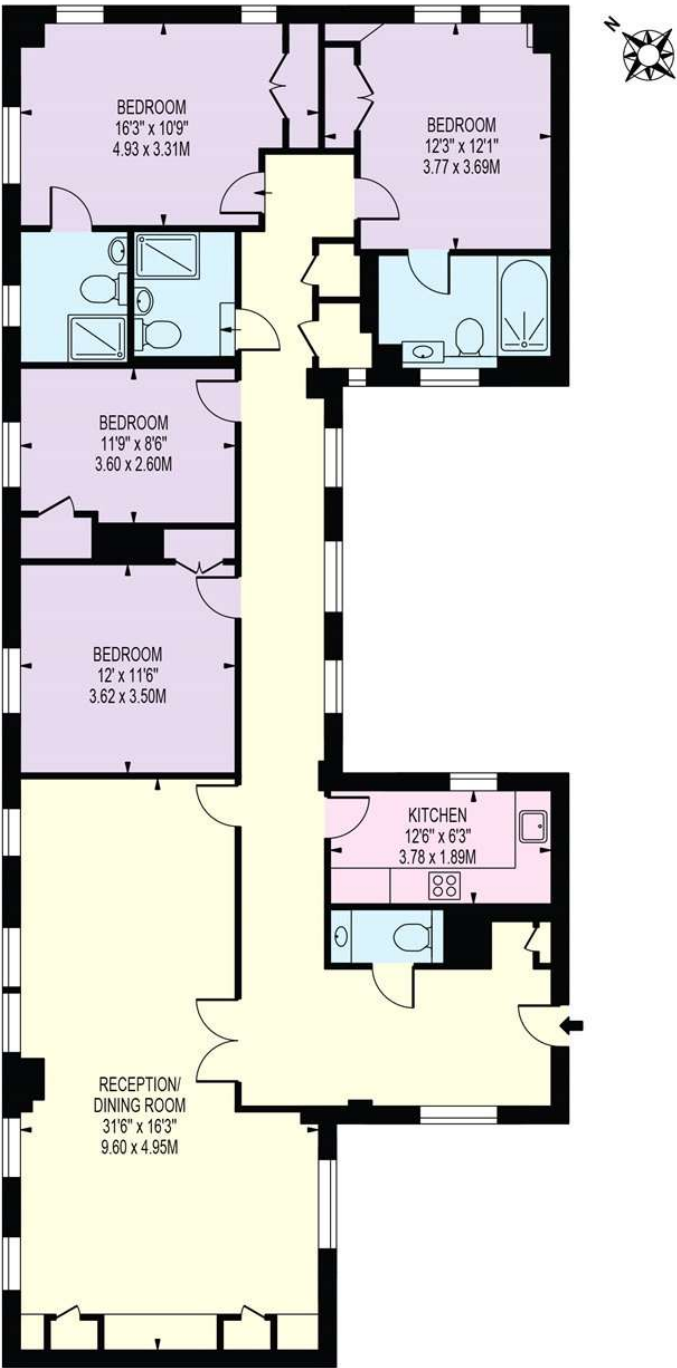
lettings.marylebone@bhhs-london.com



FLOORPLAN

CHILTERN COURT

APPROXIMATE GROSS INTERNAL FLOOR AREA: 1666 SQ FT - 154.81 SQ M



SECOND FLOOR

FOR ILLUSTRATION PURPOSES ONLY

THIS FLOOR PLAN SHOULD BE USED AS A GENERAL OUTLINE FOR GUIDANCE ONLY AND DOES NOT CONSTITUTE IN WHOLE OR IN PART AN OFFER OR CONTRACT. ANY INTENDING PURCHASER OR LESSEE SHOULD SATISFY THEMSELVES BY INSPECTION, SEARCHES, ENQUIRIES AND FULL SURVEY AS TO THE CORRECTNESS OF EACH STATEMENT. ANY AREAS, MEASUREMENTS OR DISTANCES QUOTED ARE APPROXIMATE AND SHOULD NOT BE USED TO VALUE A PROPERTY OR BE THE BASIS OF ANY SALE OR LET.