



Elegant Three-Bedroom Home with Roof Terrace in a  
Hidden Cobblestone Mews

# HESPER MEWS

EARLS COURT, SW5

Asking Price  
£2,700,000

**BERKSHIRE  
HATHAWAY**  
HOMESERVICES

LONDON

# PROPERTY DETAILS

<b>Guide Price</b> £2,700,000	<b>Square Footage</b> 1829
<b>Council Tax Band</b> H	<b>EPC</b> E
<b>Tenure</b> Freehold	

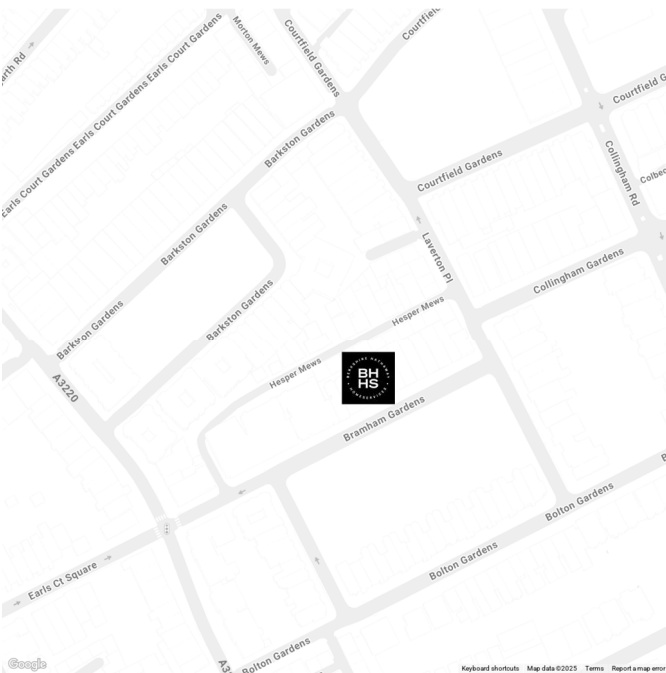
Tucked away in a charming, cobbled mews in SW5, this delightful three-bedroom freehold house spans three floors and offers a rare chance to acquire a beautifully presented family home in the prestigious Royal Borough of Kensington and Chelsea.

Discreetly positioned within a peaceful residential enclave, the property features its own private entrance leading into a spacious reception and dining area. The adjoining kitchen is thoughtfully designed, complete with a breakfast bar, integrated appliances, and a gas hob. The ground floor also benefits from a guest W/C, generous storage, and impressive ceiling heights, with skylights that bathe the space in natural light.

## FEATURES

- Three Bedrooms
- Two Reception Rooms
- Two Bathrooms
- House
- Mews
- Fitted Wardrobes
- Roof Terrace
- Ample Storage

## LOCATION



**KNIGHTSBRIDGE SALES**  
55-57 SLOANE AVENUE, SW3 3DH

020 7235 9641  
sales.knightsbridge@bhhs-london.com



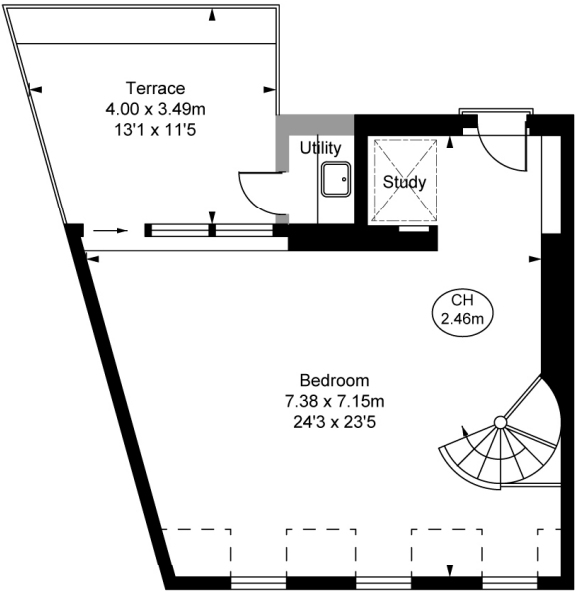
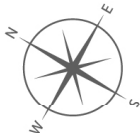
# FLOORPLAN

## Hesper Mews, SW5

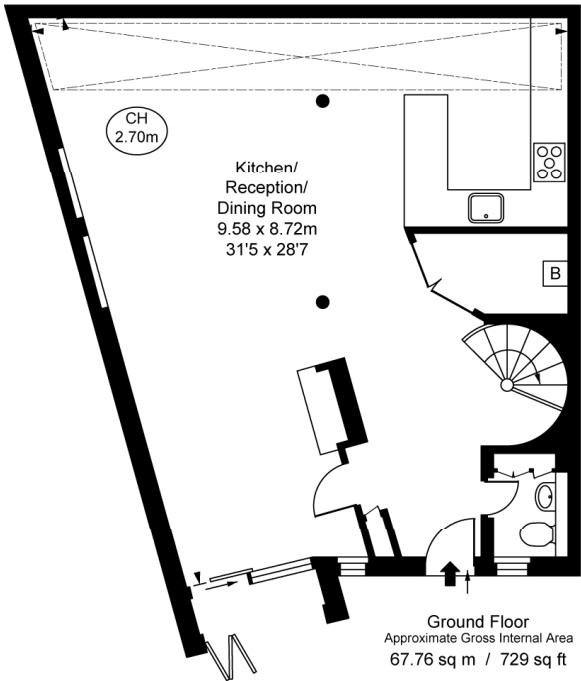
- Approximate Gross Internal Area  
166.56 sq m / 1,793 sq ft
- Utility  
1.55 sq m / 17 sq ft

Total Areas Shown On Plan  
168.11 sq m / 1,810 sq ft

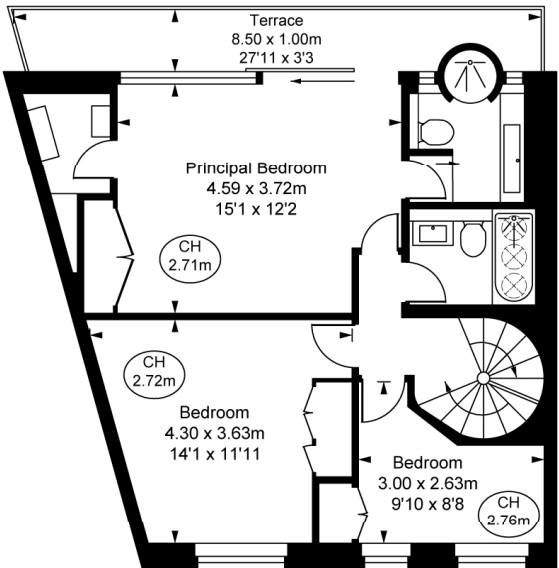
( Including restricted height  
under 1.5m ( — — — — ) )  
( CH = Ceiling Heights )



Second Floor  
Approximate Gross Internal Area  
43.54 sq m / 469 sq ft



Ground Floor  
Approximate Gross Internal Area  
67.76 sq m / 729 sq ft



First Floor  
Approximate Gross Internal Area  
55.26 sq m / 595 sq ft



This plan is not to a given scale. A detailed layout plan to scale for valuation is available on request. All measurements and areas are within 1% tolerance and have been prepared in accordance with industry standards as defined in the RICS Code of Measuring Practice  
© Fulham Performance