



Elegant Mansion Apartment in the Heart of
Marylebone Village

LUXBOROUGH STREET

MARYLEBONE, W1U

Asking Price
£1,100,000

**BERKSHIRE
HATHAWAY**
HOMESERVICES

LONDON

PROPERTY DETAILS

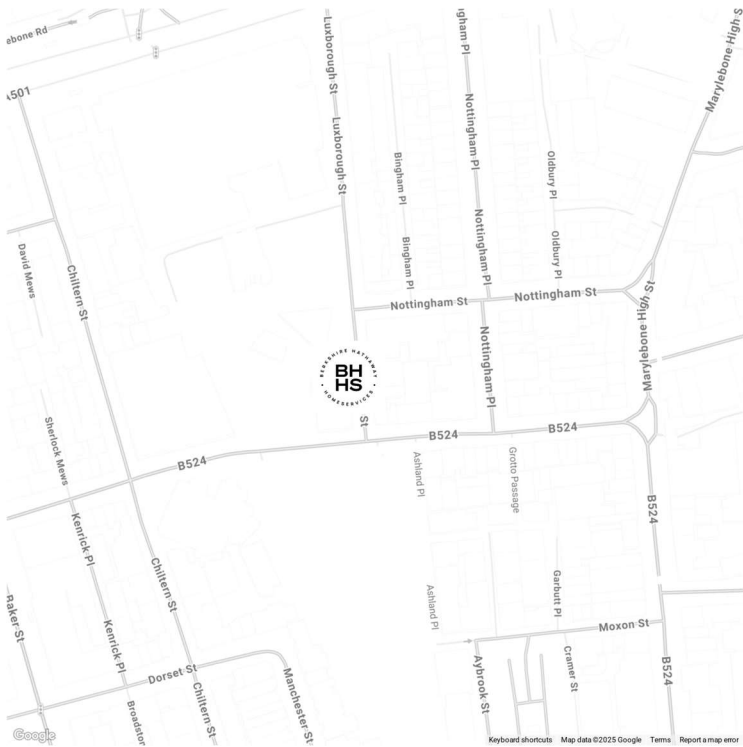
Guide Price £1,100,000	Square Footage 762	Located in this grand red brick mansion block situated close to the Marylebone High Street is this three-bedroom apartment situated on the raised ground floor. The 762 sq ft apartment benefits from high ceilings and an abundance of light throughout.
Council Tax Band F	EPC C	
Tenure Leasehold	Service Charge £4236 pa	

Winsford House is located within a short walk to the Marylebone High Street with its boutique shops and restaurants. The apartment is close to Baker Street station with links across London. Paddington Station is also on a short drive with links to major airports.

FEATURES

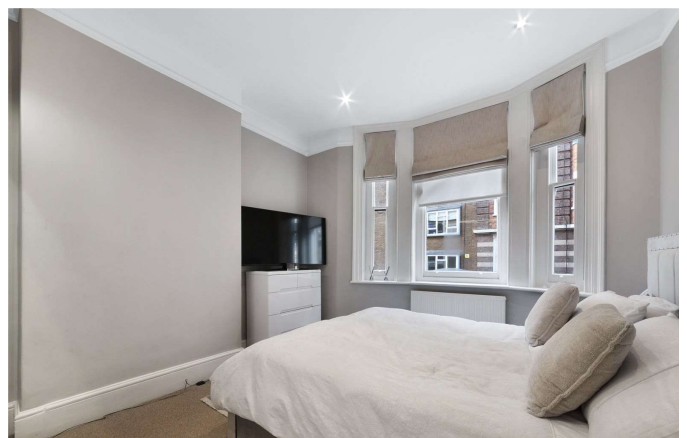
- Three Bedrooms
- One Reception Room
- One Bathroom
- High ceilings
- Very good decoration
- High ceilings

LOCATION

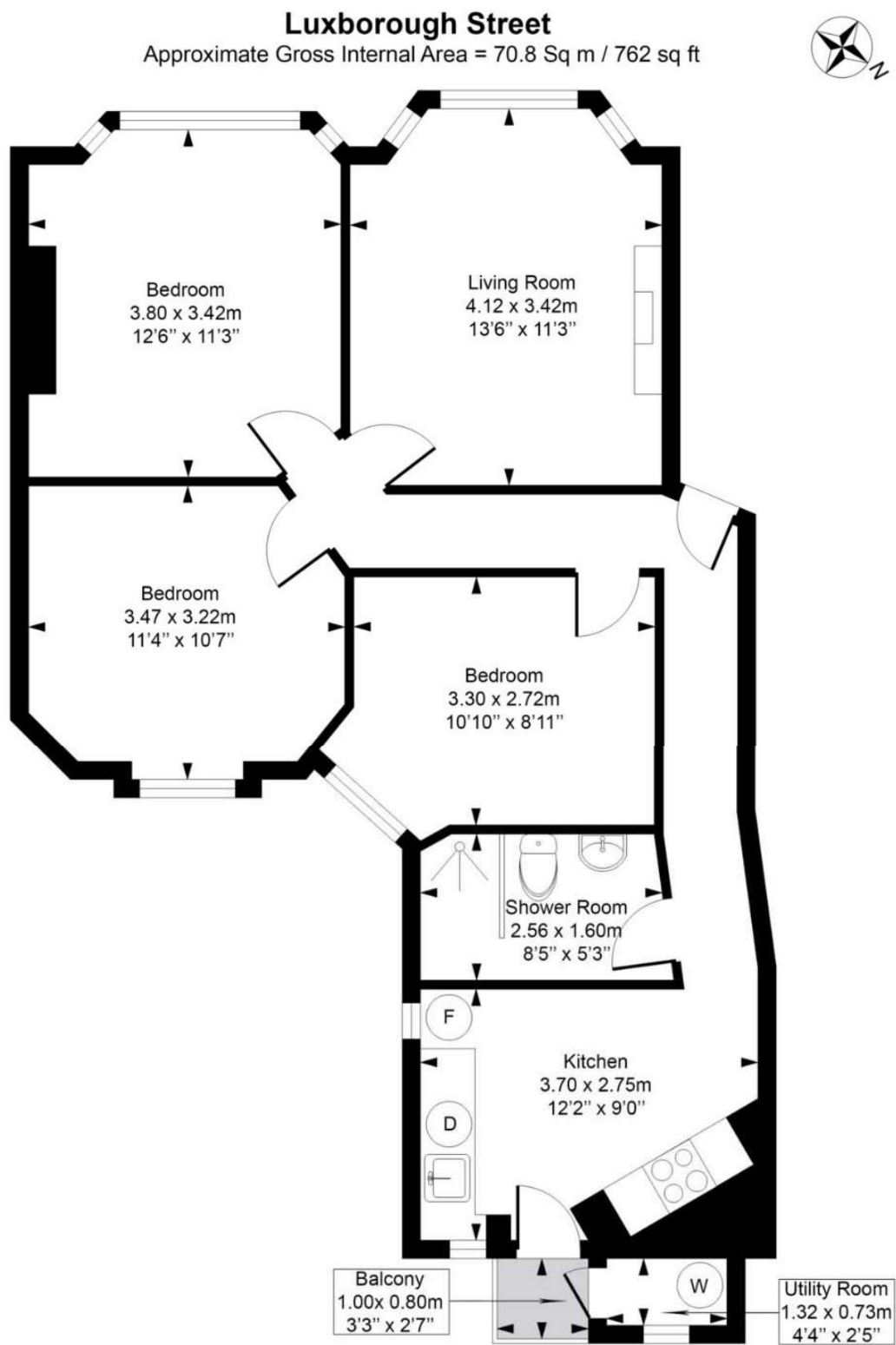


MARYLEBONE SALES
20A Paddington Street, W1U 5QP

020 7486 6338
sales.marylebone@bhhs-london.com



FLOORPLAN



Raised Ground Floor

Measured in accordance with RICS guidelines. Every attempt is made to ensure accuracy
However all measurements are approximate.
The floor plan is illustrative purposes only and is not to scale
ELLIE CLAIRE PHOTOGRAPHY LTD
www.ellieclairephotography.com