



A FOURTH FLOOR APARTMENT WITH BALCONY

LOWNDES STREET

BELGRAVIA, SW1X

£1,545 per week

**BERKSHIRE
HATHAWAY**
HOMESERVICES

LONDON

PROPERTY DETAILS

Guide Price £1,545 per week	Square Footage 1023
Council Tax Band H	EPC Rating C

A bright and stylish two bedroom apartment situated on the fourth floor (with lift) of this portered block in Belgravia

The apartment is finished to a high specification including wood flooring throughout and air conditioning.

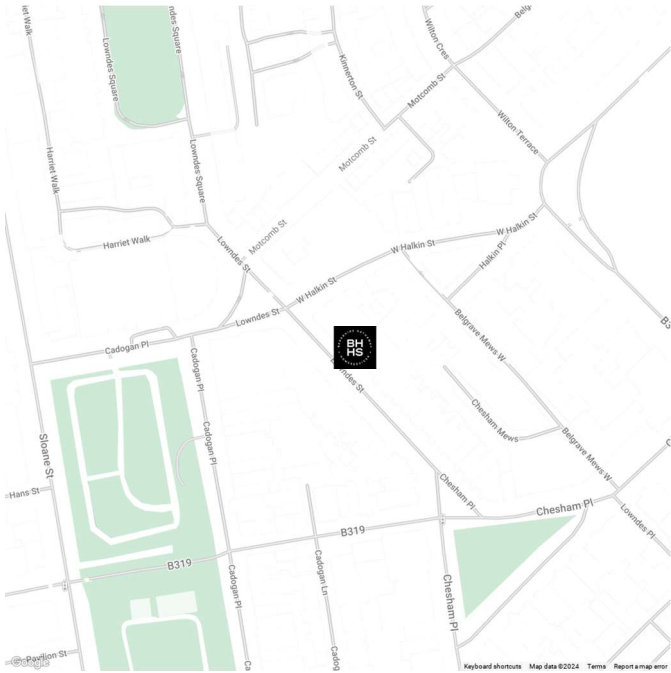
Accommodation is well balanced offering two good sized double bedrooms with fitted cupboards, two bathrooms, spacious reception room with dining area and direct access to a balcony, kitchen , lift and 24 hour porter.

Bolebec House is located on the corner of Lowndes Street and West Halkin street, well situated for the shops and restaurants in Sloane Street and Motcomb Street and a short walk from Sloane Square and the open spaces of Hyde Park.

FEATURES

- Two Bedrooms
- Wood Flooring
- Two Bathrooms
- Furnished
- Air Conditioning
- Fitted Cupboards
- Balcony

LOCATION



KNIGHTSBRIDGE LETTINGS

55-57 SLOANE AVENUE, SW3 3DH

020 7235 9641

lettings.knightsbridge@bhhs-london.com

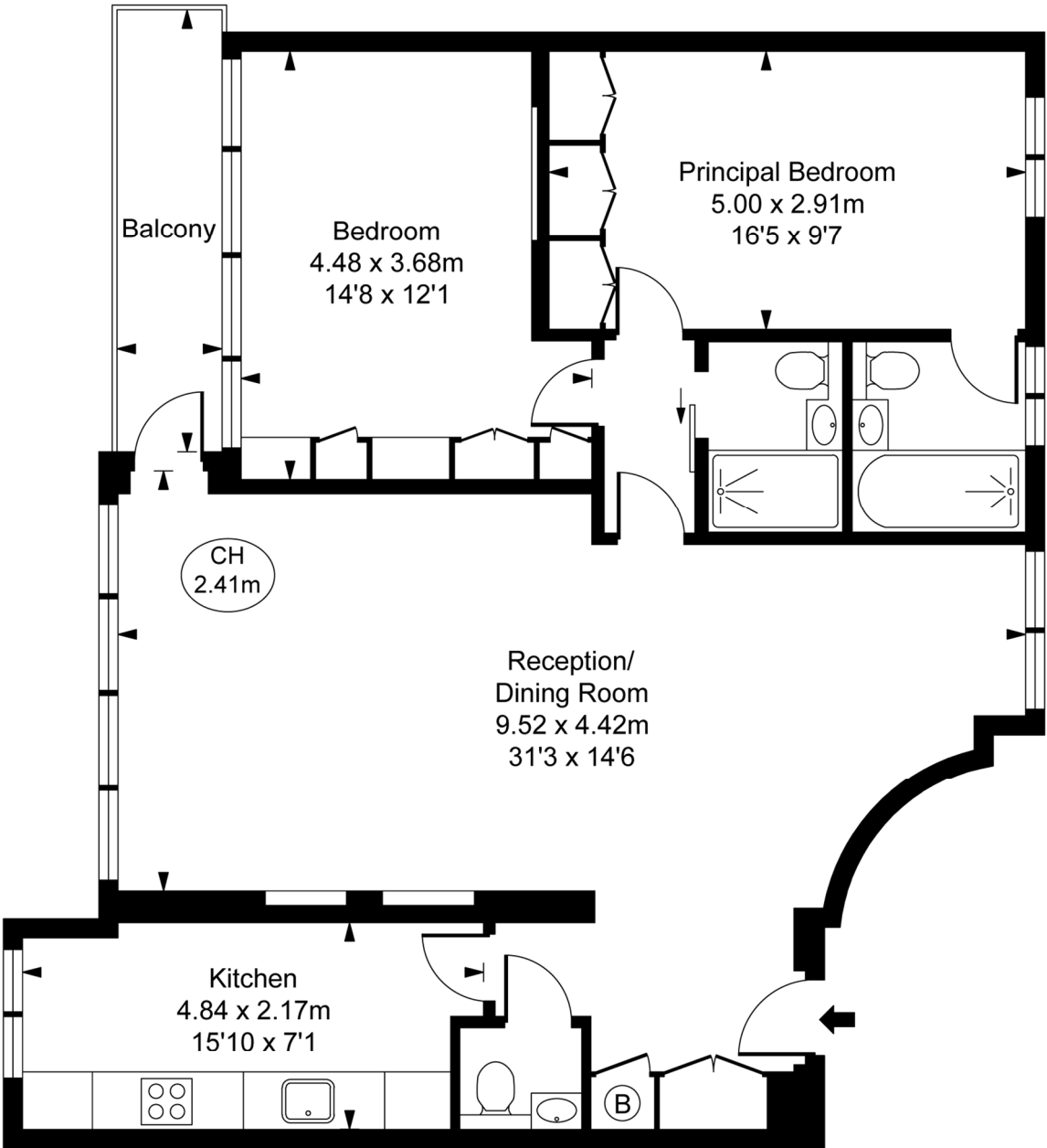


FLOORPLAN

Bolebec House, Lowndes Street, SW1X

Approximate Gross Internal Area
95.27 sq m / 1,025 sq ft

(CH = Ceiling Heights)



Fourth Floor

This plan is not to scale. It is for guidance and not for valuation purposes.
All measurements and areas are approximate only, and have been prepared in accordance with the current edition of the RICS Code of Measuring Practice.
© Fulham Performance