



Beautifully Presented Three Bedroom Apartment  
in a Sought After Portered Mansion Block

# PRINCE ALBERT ROAD

MARYLEBONE, NW8

£1,499.77 per week

**BERKSHIRE  
HATHAWAY**  
HOMESERVICES

LONDON

# PROPERTY DETAILS

## Guide Price

£1,499.77 per week

## Square Footage

1248

## Council Tax Band

G

## EPC Rating

D

Situated within the sought-after Viceroy Court which offers 24-hour portage and overlooks Regent's Park. All common areas of the building have recently undergone complete refurbishment. This spacious apartment is arranged on the second floor and is presented immaculately.

Heating and hot water are included in the rent, and the building further offers a communal roof terrace. Private parking is available through separate negotiation. The building also has a very large roof terrace overlooking the vast expanse of Regent's Park that is available for use by the residents of the building.

Nestled between the open green spaces of both Regent's Park and Primrose Hill, the property is a short walk from St. John's Wood Underground Station (Jubilee Line), as well as the shops, bars, and cafes on offer on Circus Road & St Johns Wood High Street.

## FEATURES

three Bedrooms

One Reception Room

Two Bathrooms

Concierge/ Porter

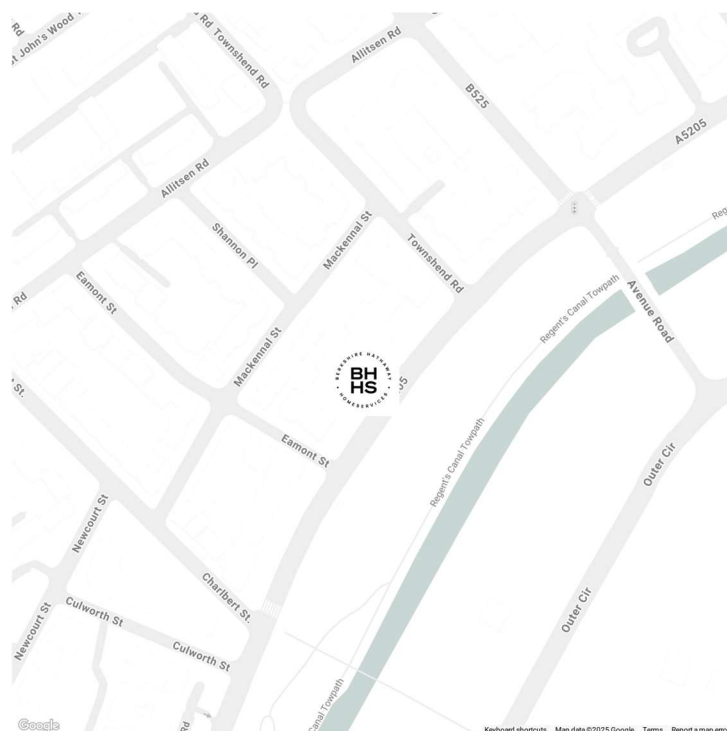
Upper Floor

Roof Terrace, Balcony

Lift

Furnished

## LOCATION



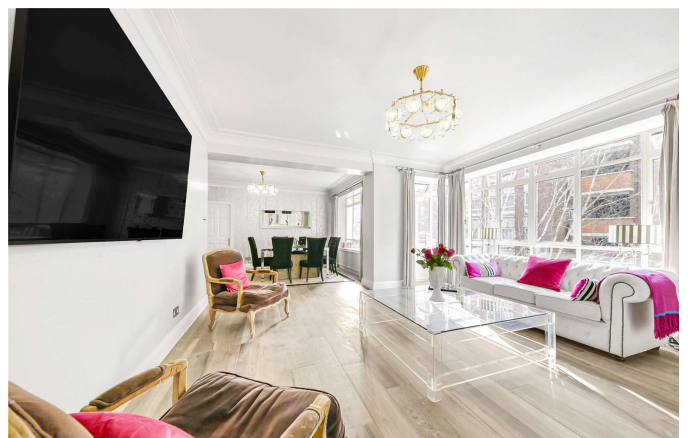
## MARYLEBONE LETTINGS

20A Paddington Street, W1U 5QP

020 7486 6338

lettings.marylebone@bhhs-london.com

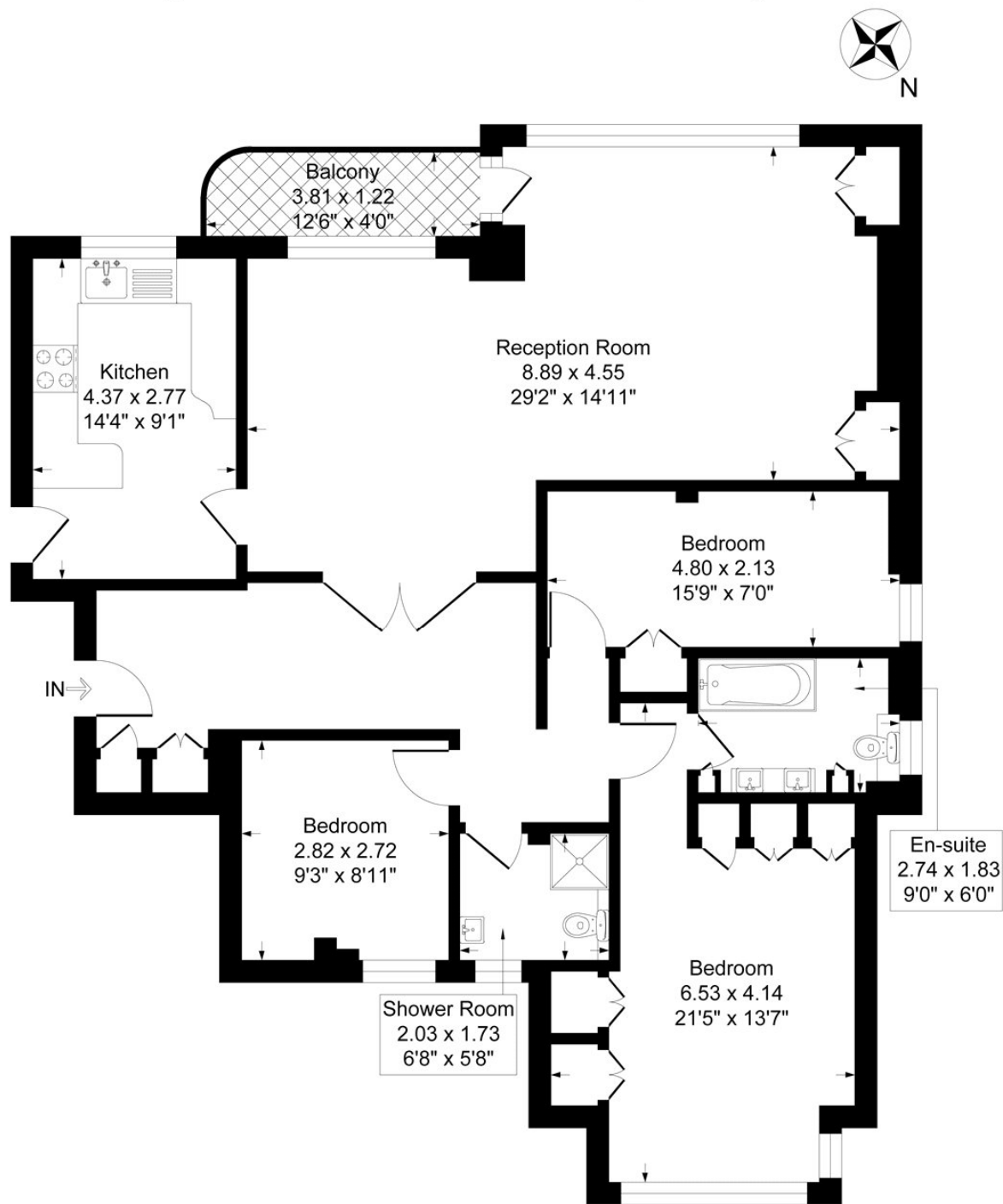




# FLOORPLAN

## Viceroy Court, 58-74 Prince Albert Road, London, NW8

Approximate Gross Internal Floor Area = 121.8 sq m / 1311 sq ft



### Second Floor

Illustration for identification purposes only, measurements are approximate, not to scale.