



Edwardian Grandeur in the Heart of Knightsbridge

# BASIL STREET

KNIGHTSBRIDGE, SW3

£2,050 per week

**BERKSHIRE  
HATHAWAY**  
HOMESERVICES

LONDON

# PROPERTY DETAILS

<b>Guide Price</b> £2,050 per week	<b>Square Footage</b> 1136
<b>Council Tax Band</b> G	<b>EPC Rating</b> C

A beautifully refurbished, bright south-facing flat situated on the first floor of an elegant Edwardian mansion block, just moments from Harrods and Hyde Park.

This exceptional apartment has been fully renovated from scratch to a high standard, seamlessly blending modern comforts with original period charm. It features high ceilings throughout, a wealth of restored period details, a newly installed heating system, and the convenience of a resident porter.

Located within the sought-after Lincoln House on Basil Street, the property is ideally positioned within walking distance of Harrods, the luxury boutiques of Knightsbridge, and excellent transport links.

Available now.

## FEATURES

Two Bedrooms
One Reception Room
Two Bathrooms
Residents Parking
Terraced
First Floor
Concierge/ Porter
Lift

## LOCATION



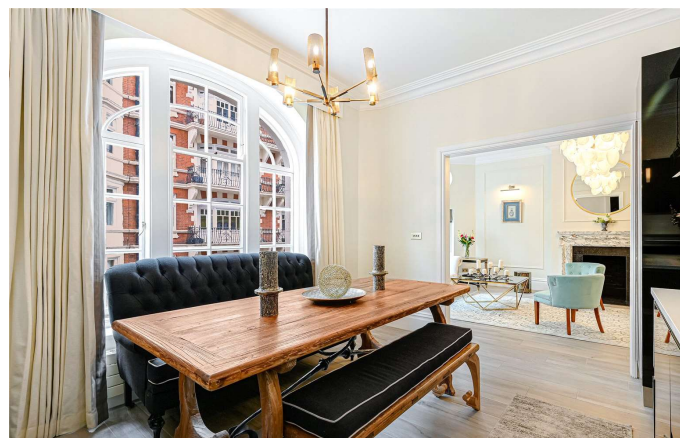
### KNIGHTSBRIDGE LETTINGS

55-57 SLOANE AVENUE, SW3 3DH

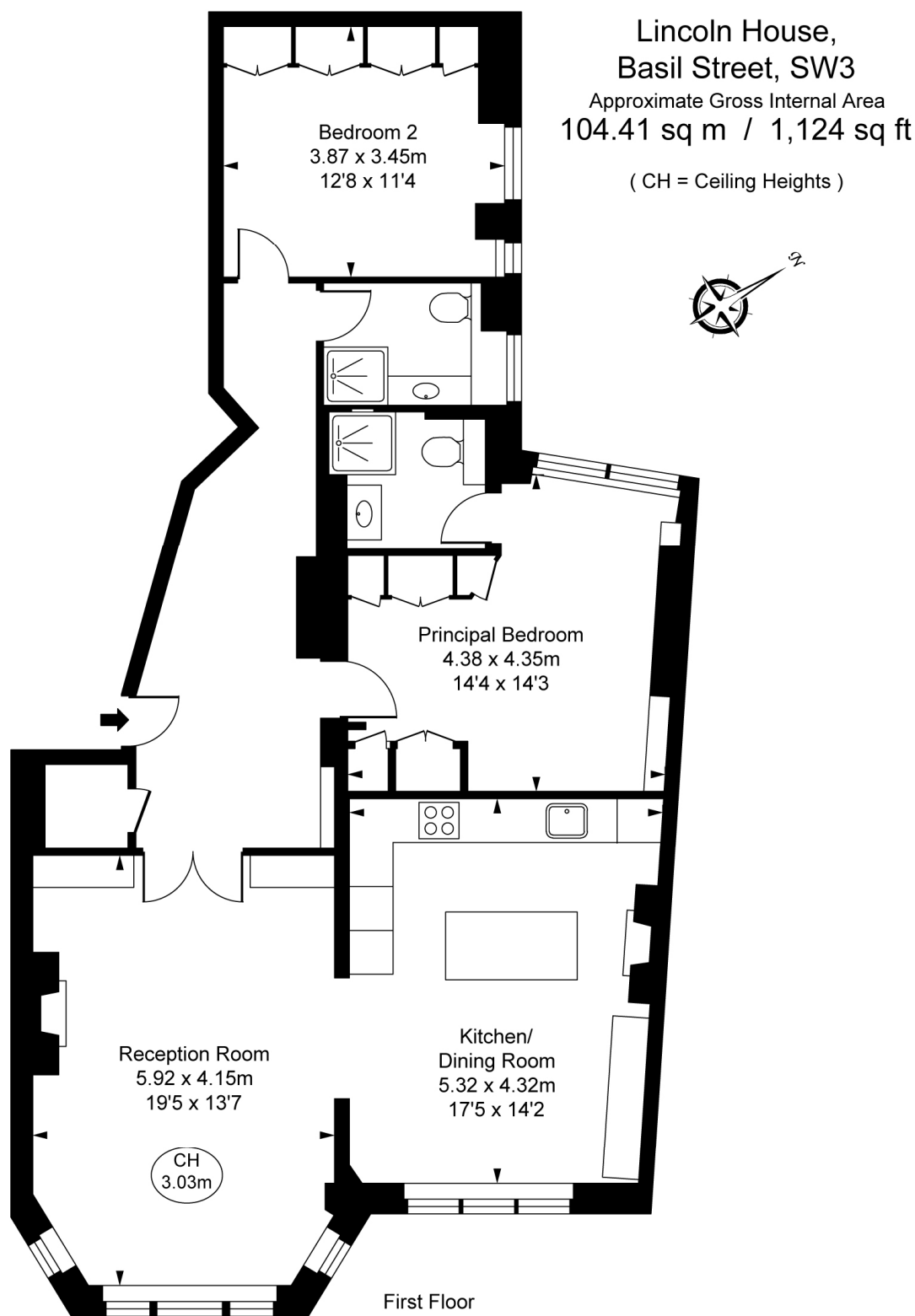
020 7235 9641

lettings.knightsbridge@bhhs-london.com





# FLOORPLAN



This plan is not to scale. It is for guidance and not for valuation purposes.  
All measurements and areas are approximate only, and have been prepared in accordance with the current edition of the RICS Code of Measuring Practice.  
© Fulham Performance