



A Modern One Bedroom Apartment Close to Chelsea & South Kensington in a Secure Portered Building

SLOANE AVENUE MANSIONS

CHELSEA, SW3

Offers in excess of
£595,000

**BERKSHIRE
HATHAWAY**
HOMESERVICES

LONDON

PROPERTY DETAILS

Guide Price	Square Footage
£595,000	402

Council Tax Band	EPC
E	C

Ground Rent	Service Charge
£30	£4361

Tenure

To be advised

Located within a secure, portered building on the ever-popular Sloane Avenue, this bright and modern one-bedroom apartment combines practical living space with a highly sought-after location.

Situated on the second floor, the apartment boasts wood flooring throughout and is well maintained. It features a semi open-plan kitchen and living area with access to a private balcony overlooking Sloane Avenue. A contemporary bathroom is located off the spacious double bedroom, which also provides access to the balcony.

Sloane Avenue benefits from its proximity to King's Road, offering an abundance of high-end boutiques, local eateries, and coffee houses. It is also within walking distance of South Kensington.

For transport, both Sloane Square and South Kensington stations are nearby, providing access to the Circle, District, and Piccadilly lines.

FEATURES

One Bedroom

One Bathroom

Balcony

Concierge/ Porter

Lift

Communal Heating

Furnished

LOCATION

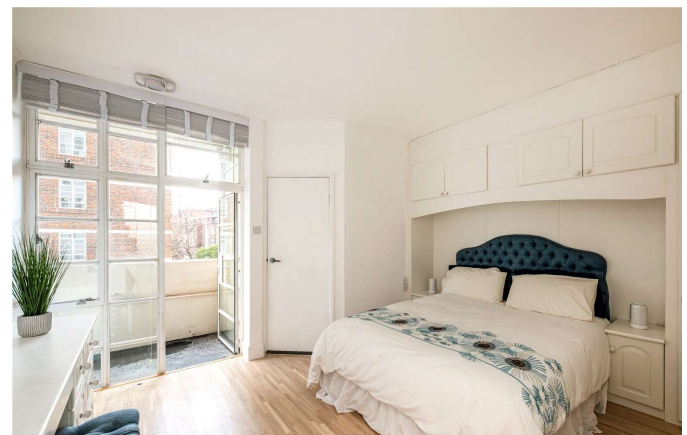
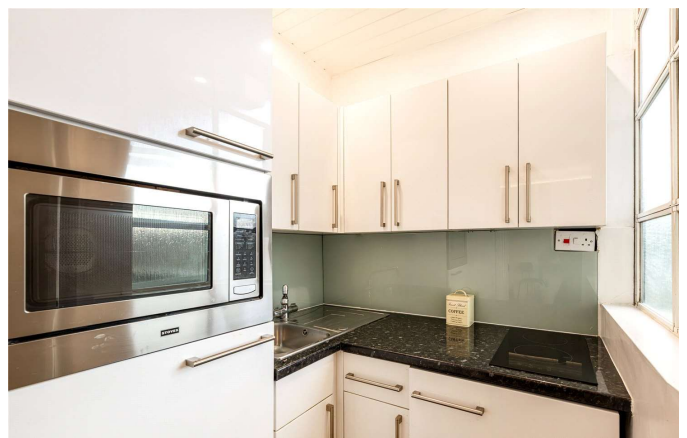


KNIGHTSBRIDGE SALES

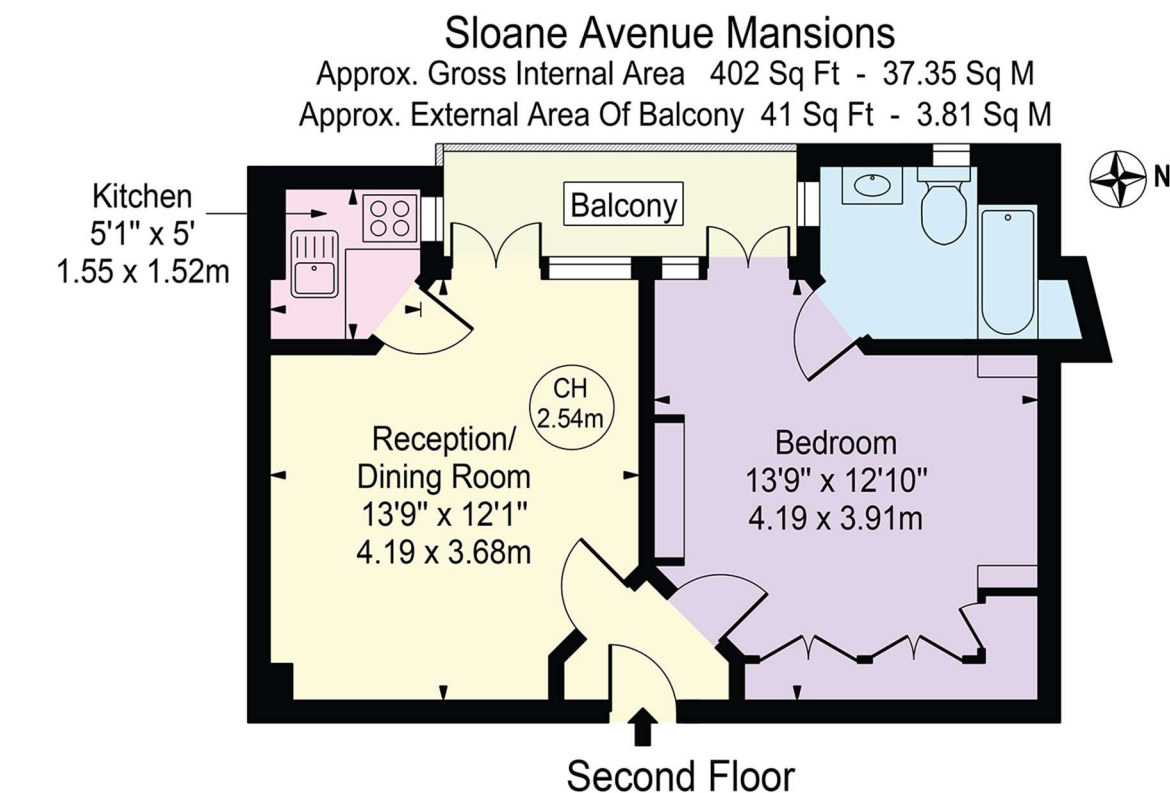
55-57 SLOANE AVENUE, SW3 3DH

020 7235 9641

sales.knightsbridge@bhhs-london.com



FLOORPLAN



For Illustration Purposes Only - Not To Scale

This floor plan should be used as a general outline for guidance only and does not constitute in whole or in part an offer or contract.
Any intending purchaser or lessee should satisfy themselves by inspection, searches, enquiries and full survey as to the correctness of each statement.
Any areas, measurements or distances quoted are approximate and should not be used to value a property or be the basis of any sale or let.

Copyright Morriarti Photography & Design LTD