



CLANRICARDE GARDENS

BAYSWATER, W2

Spacious Modern Studio Apartment

£550 Per Week

£2,383.33 pcm

CLANRICARDE GARDENS

BAYSWATER, W2

Located within a white stucco building, this studio apartment boasts hardwood flooring throughout. It features an open-plan kitchen, reception area with a separate sleeping space, and a walk-in wardrobe. Recently renovated to an exceptional standard, this apartment features impressive ceiling height and plenty of natural light. It is available immediately and comes furnished.

Situated in the highly convenient Clanricarde Gardens, the property is just moments away from Notting Hill Gate Station, providing excellent transport links to both the heart of the city and out of London.

- Long Let
- One Reception Room
- One Bathroom
- Apartment
- Basement
- Modern
- Furnished
- Part Furnished
- Unfurnished
- 535 Sq Ft Approximately

COUNCIL TAX BAND: C

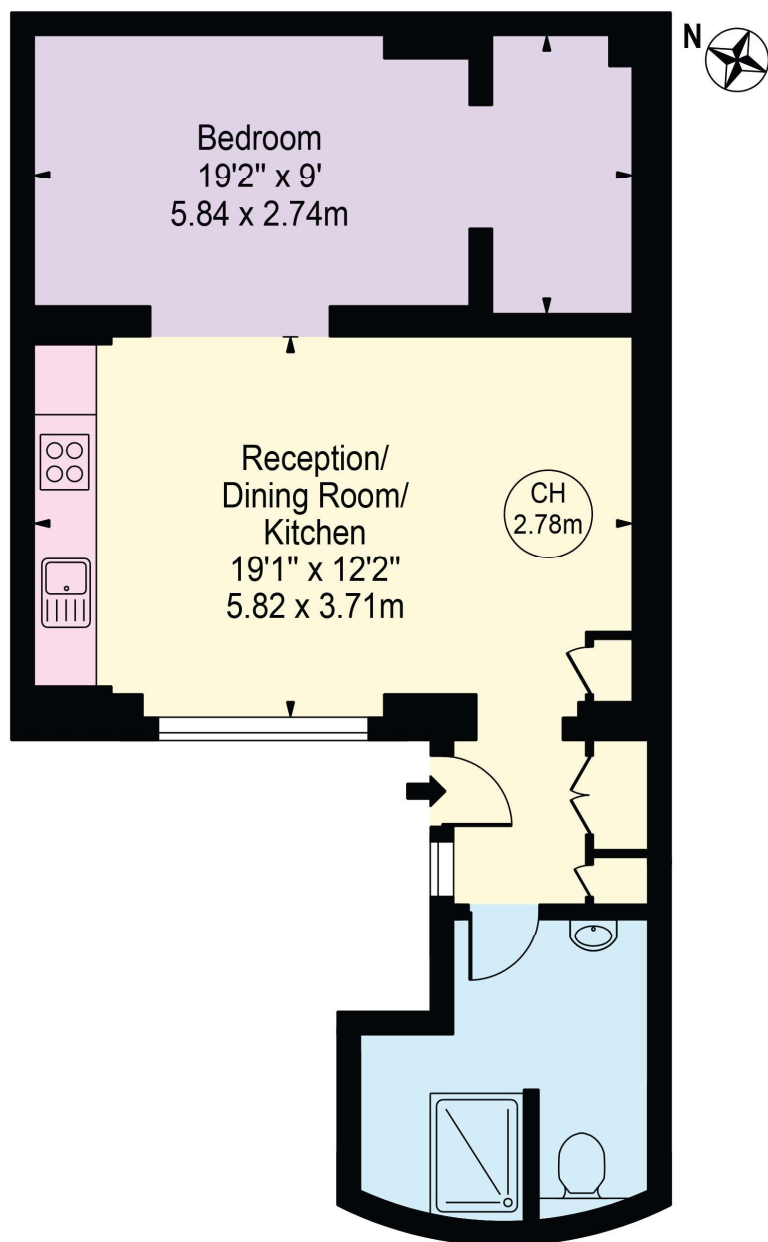
EPC RATING: C





Clanricarde Gardens

Approx. Gross Internal Area 535 Sq Ft - 49.70 Sq M



Lower Ground Floor

For Illustration Purposes Only - Not To Scale

This floor plan should be used as a general outline for guidance only and does not constitute in whole or in part an offer or contract. Any intending purchaser or lessee should satisfy themselves by inspection, searches, enquiries and full survey as to the correctness of each statement. Any areas, measurements or distances quoted are approximate and should not be used to value a property or be the basis of any sale or let.

Copyright Morriarti Photography & Design LTD

Hyde Park & Bayswater
Lettings
24-25 Albion Street

020 7262 2030
lettings.hydepark@bhhs-london.com
BHHSLondon.com

**BERKSHIRE
HATHAWAY**
HOMESERVICES
LONDON

Consumer Protection from Unfair Trading Regulations 2008. These details are for guidance only and complete accuracy cannot be guaranteed. If there is any point, which is of particular importance, verification should be obtained. They do not constitute a contract or part of a contract. All measurements are approximate. No guarantee can be given with regard to planning permissions or fitness for purpose. No apparatus, equipment, fixture or fitting has been tested. Items shown in photographs are NOT