



Spacious Four Bedroom Duplex Apartment in the
Heart of Marylebone

GREAT CUMBERLAND PLACE

MARYLEBONE, W1H

£1,750 per week

**BERKSHIRE
HATHAWAY**
HOMESERVICES

LONDON

PROPERTY DETAILS

| | |
|---------------------------------------|--------------------------------|
| Guide Price £1,750 per week | Square Footage 1,709 |
| Council Tax Band G | EPC Rating D |

This elegant Georgian duplex is located on a quiet residential street in the heart of Marylebone.

The apartment benefits from several period features including cornicing, high ceilings, and fireplaces. The property comprises two reception rooms, a guest wc, a newly refurbished kitchen leads onto the dining room, and access to a private roof terrace. The apartment offers four double bedrooms two of which are ensuite and a further family bathroom and two additional patios.

Great Cumberland Place is ideally located only a short walk away from the eateries and boutiques of Marylebone High Street, Oxford Street and the green open spaces of Hyde Park and Regents Park.

FEATURES

- Four Bedrooms
- Two Reception Rooms
- Three Bathrooms
- Ground Floor
- Patio
- Roof Terrace

LOCATION



MARYLEBONE LETTINGS

20A Paddington Street, W1U 5QP

020 7486 6338

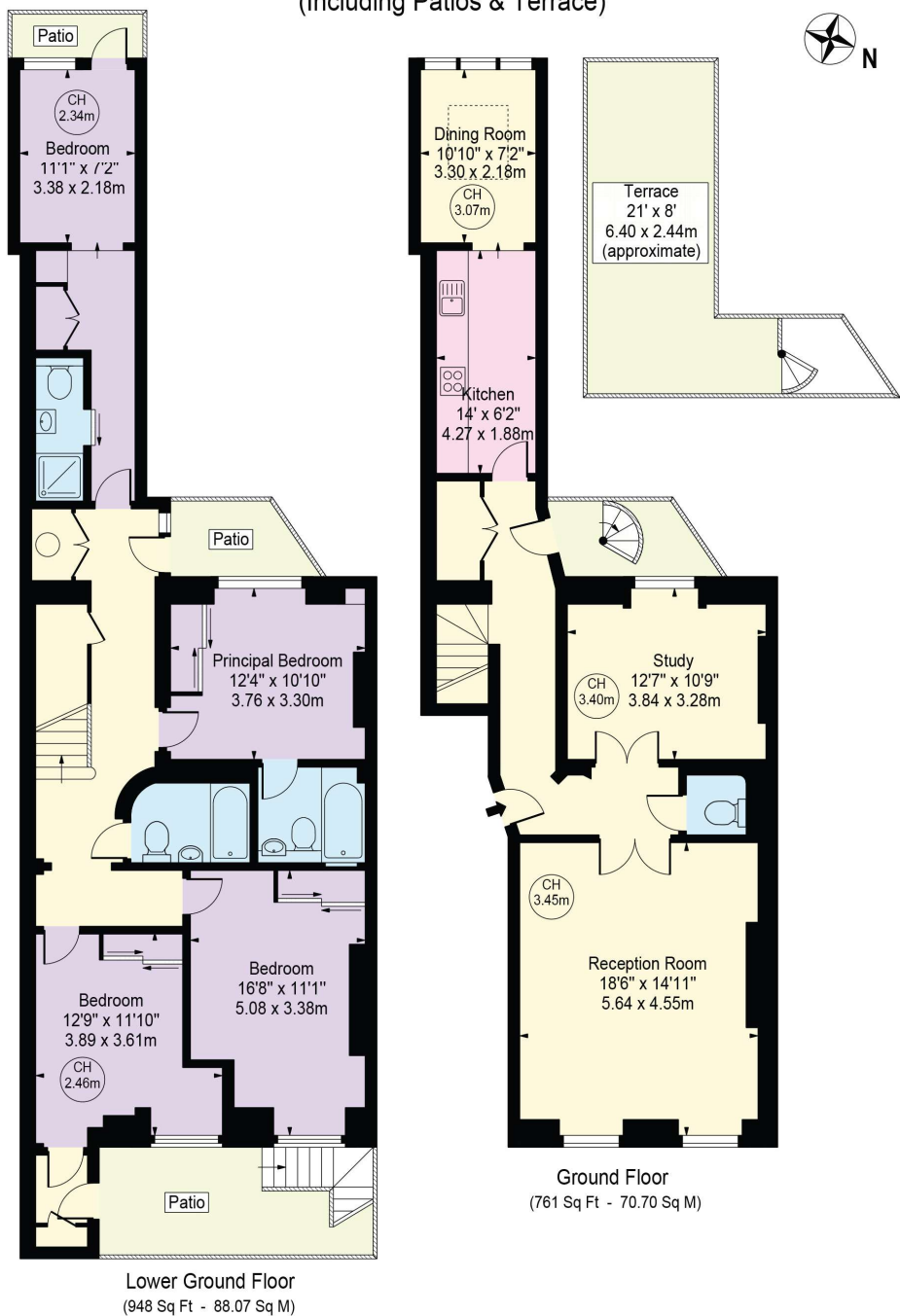
lettings.marylebone@bhhs-london.com



FLOORPLAN

Great Cumberland Place

Approx. Gross Internal Area 1709 Sq Ft - 158.77 Sq M
Approx. Total External Area 386 Sq Ft - 35.86 Sq M
(Including Patios & Terrace)



For Illustration Purposes Only - Not To Scale

This floor plan should be used as a general outline for guidance only and does not constitute in whole or in part an offer or contract. Any intending purchaser or lessee should satisfy themselves by inspection, searches, enquiries and full survey as to the correctness of each statement. Any areas, measurements or distances quoted are approximate and should not be used to value a property or be the basis of any sale or let.

Copyright Morriarti Photography & Design LTD